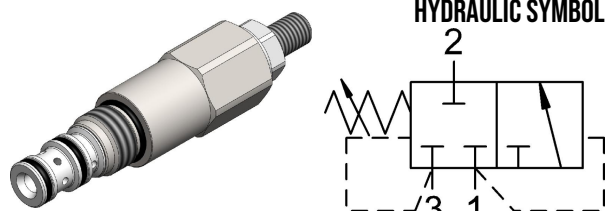


SQC2.S08 VALVE SERIES

Hybrid SAE Cartridge - 250 bar
Direct acting with external Pilot and Vent

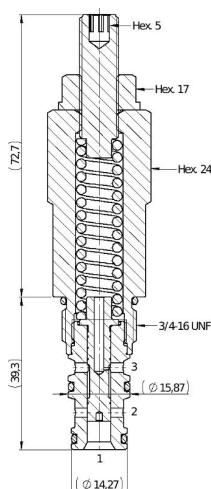


DESCRIPTION

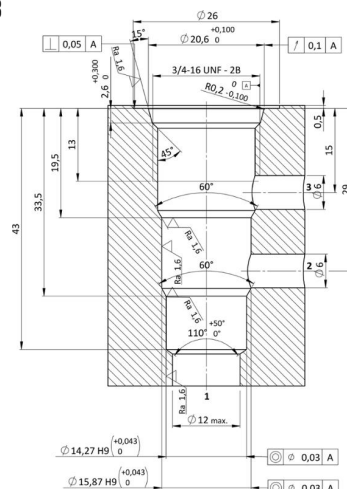
The SQC2.S08 is a screw in, cartridge style, direct acting, spool type hydraulic sequence valve with internal pilot. This valve has a spring chamber drain and is designed to direct oil to a secondary circuit once a predetermined pressure level is reached in the primary circuit. In the idle condition, the SQC2.S08 blocks flow at 1, and also allows no connection between 2 and 3. Once pressure setting is reached, the spool shifts and puts in connection ports 1 and 2, while blocking flow at 3. Note that the back pressure at port 3 is directly additive to the spring setting value.

Warning: Adjustment screw doesn't have a positive stop which prevents it from being backed out of the valve.

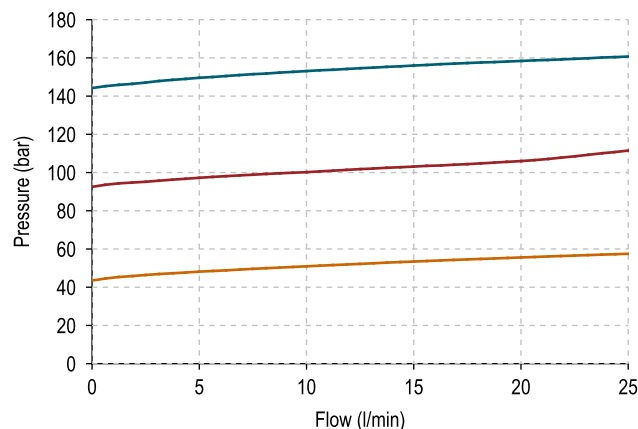
CROSS SECTION



CAVITY
VH023



PERFORMANCE DETAILS





NOTE

The performance chart illustrates flow handling capacity for each spring bias options.
p/Qcurves are recorded at TOil = 40°C and 46 cSt.

LEGEND

- Maximum nominal setting pressure
- Medium nominal setting pressure
- Minimum nominal setting pressure

TECHNICAL DATA

MAXIMUM OPERATING PRESSURE	250 bar
MAXIMUM FLOW	25 l/min
MAXIMUM INTERNAL LEAKAGE	50 cm ³ / min @ 300 bar
EXTERNAL COMPONENT TREATMENT	Zn/Fe - standard (96h) Zn/Ni (720h) (Upon customer request)
O-RING TEMPERATURE RANGE	-30° C to 110° C (standard sealing NBR - BUNA - N) -35° C to 140° C (HNBR - Upon customer request) -23° C to 225° C (FKM - Upon customer request)
OIL TEMPERATURE RANGE	-30° C to 110° C
FLUIDS	Mineral - based or synthetics with lubricating properties
VISCOSITIES	7,4 to 420 cSt
FILTRATION	20/18/15 ISO 4406 (maximum filtration admitted)
ORIENTATION	No restrictions
INSTALLATION TORQUE	45-50 Nm  Hex.24
TIGHTENING TORQUE NUT	13-17 Nm  Hex.17
TECH. SPEC. FOR CHARACTERIZATION	see page 811
OIL TESTING CONDITIONS	ISO VG 46 cSt
SEAL KIT CODE	SK.069 (standard sealing NBR-BUNA-N)
WEIGHT	0,234 kg

ORDERING CODE

The diagram illustrates the marking code structure for the valve. It consists of five main sections separated by dots:

- VALVE BASIC CODE:** A box containing the characters S, Q, C, and 2. Below it, the text "SIZE 3/4-16 UNF with Ø15,87 and Ø14,27 nose sizes" is shown.
- MARKING:** A box containing the characters S, 0, and 8. Below it, the text "0 = Standard factory marking. Customized marking can be done upon request." is shown.
- SPRING RANGE:** A box containing the characters 0 and *. Below it, a table is provided:
- PRESSURE SETTING IN [BAR]:** A box containing three asterisks (*, *, *). Below it, the text "Standard setting are multiple of 5 bars." is shown.

Spring model code	Setting pressure range (bar)
N	50-150