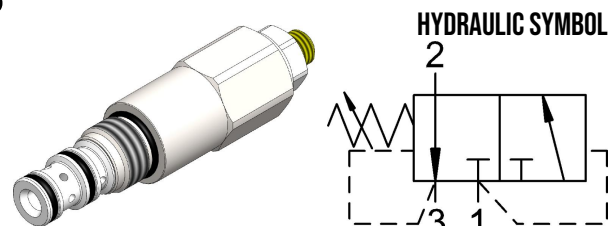


# SQC1.S08 VALVE SERIES

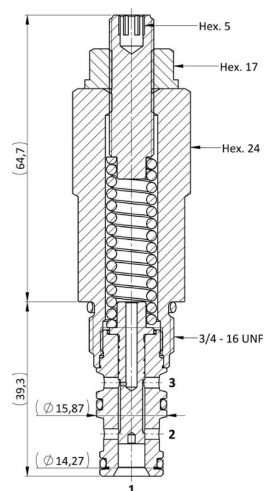
Hybrid SAE Cartridge - 250 bar  
Direct acting with internal Pilot and Vent



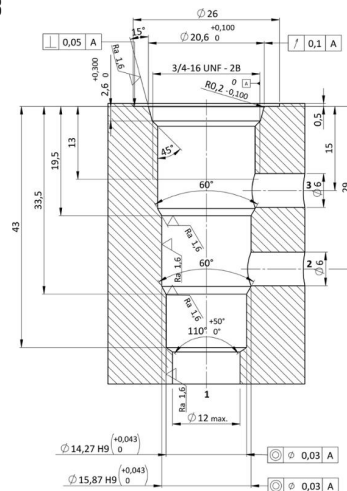
## DESCRIPTION

The SQC1.S08 is a screw in, cartridge style, direct acting, spool type hydraulic sequence valve with internal pilot. This valve has a spring chamber drain and is designed to direct oil to a secondary circuit once a predetermined pressure level is reached in the primary circuit. In the idle condition, the SQC1.S08 blocks flow at 1, while connecting ports 2 and 3. Once pressure setting is reached, the spool shifts and puts in connection ports 1 and 2, while blocking flow at 3. Note that the back pressure at port 3 is directly additive to the spring setting value.  
Warning: Adjustment screw doesn't have a positive stop which prevents it from being backed out of the valve.

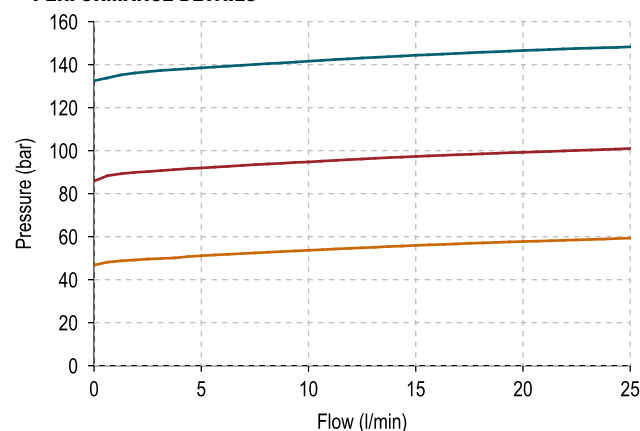
## CROSS SECTION



## CAVITY VH023



## PERFORMANCE DETAILS



### NOTE

The performance chart illustrates flow handling capacity for each spring bias options. p/Q curves are recorded at TOil = 40°C and 46 cSt.

### LEGEND

- Maximum nominal setting pressure
- Medium nominal setting pressure
- Minimum nominal setting pressure

## TECHNICAL DATA

MAXIMUM OPERATING PRESSURE	250 bar
MAXIMUM FLOW	25 l/min
MAXIMUM INTERNAL LEAKAGE	50 cm <sup>3</sup> / min @ 80% nominal pressure setting on port 1
EXTERNAL COMPONENT TREATMENT	Zn/Fe - standard (96h) Zn/Ni (720h) (Upon customer request)
O-RING TEMPERATURE RANGE	-30° C to 110° C (standard sealing NBR - BUNA - N) -35° C to 140° C (HNBR - Upon customer request) -23° C to 225° C (FKM - Upon customer request)
OIL TEMPERATURE RANGE	-30° C to 110° C
FLUIDS	Mineral - based or synthetics with lubricating properties
VISCOSITIES	7,4 to 420 cSt
FILTRATION	20/18/15 ISO 4406 (maximum filtration admitted)
ORIENTATION	No restrictions
INSTALLATION TORQUE	45-50 Nm  Hex.24
TIGHTENING TORQUE NUT	13-17 Nm  Hex.17
TECH. SPEC. FOR CHARACTERIZATION	see page 811
OIL TESTING CONDITIONS	ISO VG 46 cSt
SEAL KIT CODE	SK.069 (standard sealing NBR-BUNA-N)
WEIGHT	0,253 kg

## ORDERING CODE

<table><tr><td>S</td><td>Q</td><td>C</td><td>1</td></tr></table>				S	Q	C	1	·	<table><tr><td>S</td><td>0</td><td>8</td></tr></table>			S	0	8	·	<table><tr><td>0</td><td>*</td></tr></table>		0	*	·	<table><tr><td>*</td><td>*</td><td>*</td></tr></table>			*	*	*
S	Q	C	1																							
S	0	8																								
0	*																									
*	*	*																								
VALVE BASIC CODE				MARKING			PRESSURE SETTING IN [BAR]																			
SIZE				0 = Standard factory marking. Customized marking can be done upon request.			Standard setting are multiple of 5 bars.																			
3/4-16 UNF with Ø15,87 and Ø14,27 nose sizes				SPRING RANGE																						
				Spring model code		Setting pressure range (bar)																				
				N		50-135																				