

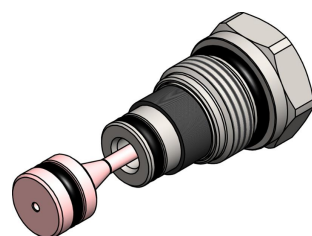
SPF0.S08 VALVE SERIES

Hybrid SAE08 Cartridge - 350 bar

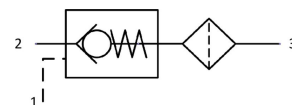
Direct acting check valve

Pilot piston to open

With Filter



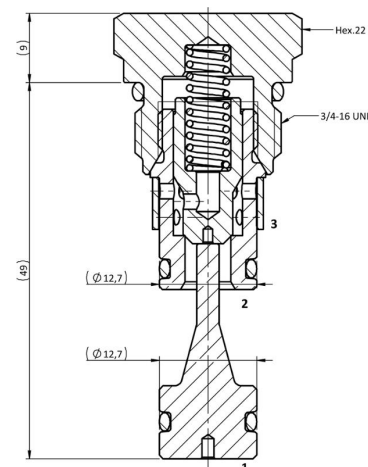
HYDRAULIC SYMBOL



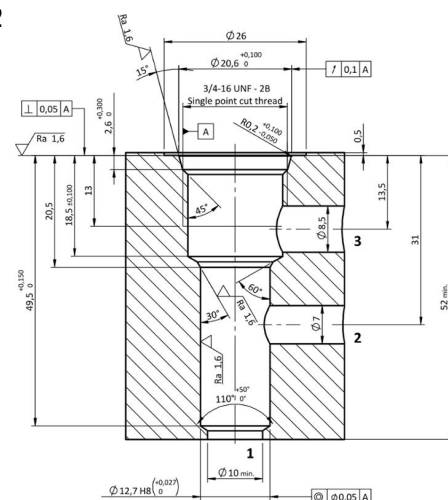
DESCRIPTION

Normally closed, dual pilot check valve. Cartridge is closed until sufficient pressure is applied on port 2 to reach the bias spring setting, lift the poppet and allow free flow to 3. The valve is normally closed from 3 to 2. When sufficient pressure is applied on port 1, the pilot piston lifts the poppet from its seat and allows flow from 3 to 2. Very limited leakage in the check condition. The valve also has a filter in port 3, mesh size 280 um.

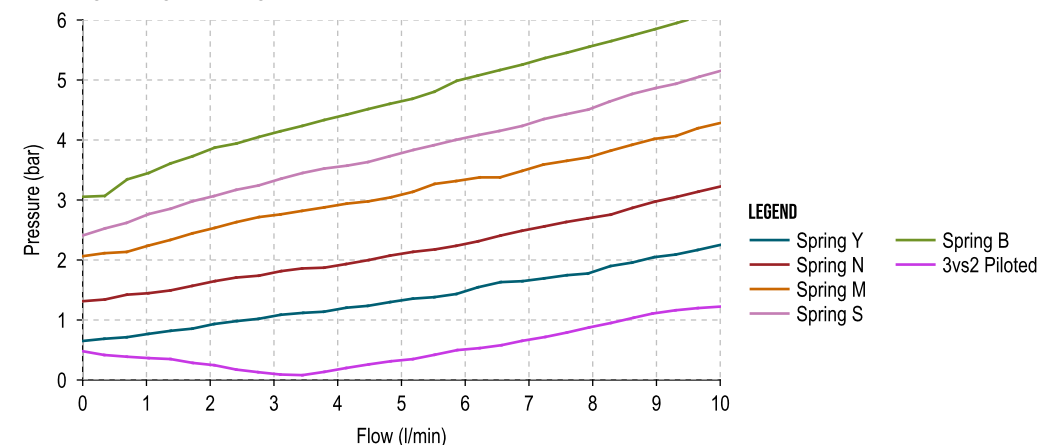
CROSS SECTION



CAVITY VH102



PERFORMANCE DETAILS



TECHNICAL DATA

MAXIMUM OPERATING PRESSURE	350 bar
MAXIMUM FLOW	10 l/min
MAXIMUM INTERNAL LEAKAGE	0,10 cm ³ / min @ 10 bar 0,10 cm ³ / min @ 350 bar
PILOT RATIO	4,5:1
EXTERNAL COMPONENT TREATMENT	Zn/Fe - standard (96h) Zn/Ni (720h) (Upon customer request)
O-RING TEMPERATURE RANGE	-30° C to 110° C (standard sealing NBR - BUNA - N) -35° C to 140° C (HNBR - Upon customer request) -23° C to 223° C (FKM - Upon customer request)
OIL TEMPERATURE RANGE	-30° C to 110° C
FLUIDS	Mineral - based or synthetics with lubricating properties
VISCOSITIES	7,4 to 420 cSt
FILTRATION	20/18/15 ISO 4406 (maximum filtration admitted)
ORIENTATION	No restrictions
INSTALLATION TORQUE	40-45 Nm
TECH. SPEC. FOR CHARACTERIZATION	see page 811
OIL TESTING CONDITIONS	ISO VG 46 cSt
SEAL KIT CODE	SK.045 (standard NBR-BUNA-N) (standard sealing NBR-BUNA-N)
WEIGHT	0,067 kg

ORDERING CODE

S P F 0

VALVE BASIC CODE

S 0 8

MARKING

0 = Standard factory marking.
Customized marking can be done upon request

SIZE

3/4-16 UNF with Ø12,7 nose size

BIAS SPRING OPTIONS

Spring model code	Cracking pressure (bar)
N	1
M	2
B	3
Y	0,5
S	2,5

Specifications may change without notice.