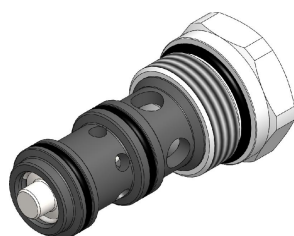
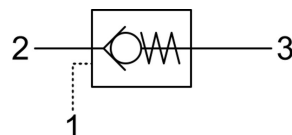


SPC4.M33 VALVE SERIES

METRIC Cartridge - 420 bar
Direct acting check valve
Pilot piston to open



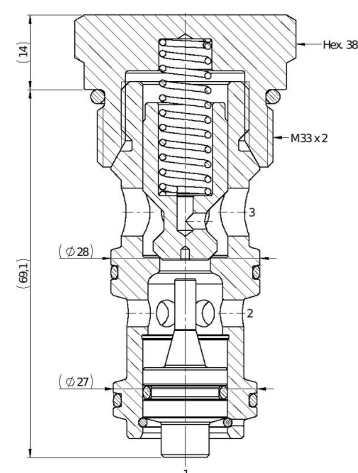
HYDRAULIC SYMBOL



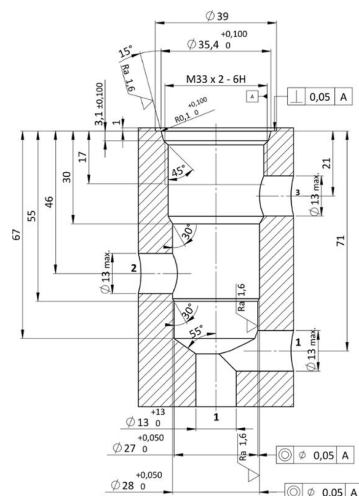
DESCRIPTION

Cartridge style, normally closed, single pilot check valve. Cartridge is closed until sufficient pressure is applied on port 2 to reach the bias spring setting, lift the poppet and allow free flow to 3. The valve is normally closed from 3 to 2. When sufficient pressure is applied on port 1, the pilot piston lifts the poppet from its seat and allows flow from 3 to 2. Very limited leakage in the check condition.

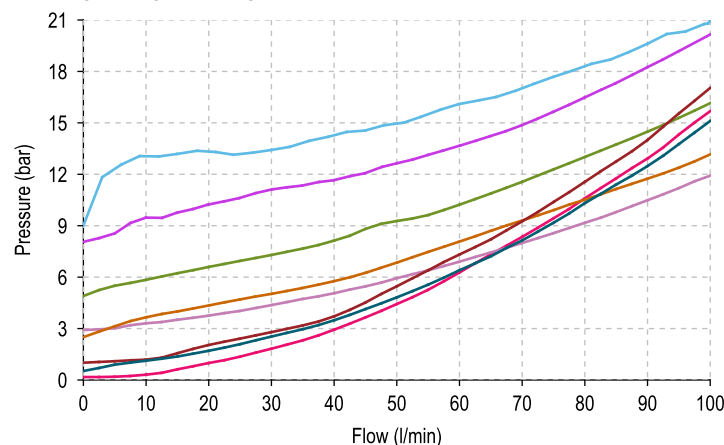
CROSS SECTION



CAVITY VH122



PERFORMANCE DETAILS



NOTE
The performance chart illustrates flow handling capacity for significant spring options.
p/Q curves are recorded at TOil = 40°C and 46 cSt.

LEGEND
— Spring Y — Spring P
— Spring N — Spring G
— Spring S — Spring V
— Spring B — 3vs2 Piloted

TECHNICAL DATA

MAXIMUM OPERATING PRESSURE	420 bar
MAXIMUM FLOW	100 l/min
MAXIMUM INTERNAL LEAKAGE	0,10 cm ³ / min @ 10 bar 0,10 cm ³ / min @ 420 bar
PILOT RATIO	2,8:1
EXTERNAL COMPONENT TREATMENT	Zn/Fe - standard (96h) Zn/Ni (720h) (Upon customer request)
O-RING TEMPERATURE RANGE	-30° C to 110° C (standard sealing NBR - BUNA - N) -35° C to 140° C (HNBR - Upon customer request) -23° C to 225° C (FKM - Upon customer request)
OIL TEMPERATURE RANGE	-30° C to 110° C
FLUIDS	Mineral - based or synthetics with lubricating properties
VISCOSITIES	7,4 to 420 cSt
FILTRATION	20/18/15 ISO 4406 (maximum filtration admitted)
ORIENTATION	No restrictions
INSTALLATION TORQUE	150-160 Nm Hex.38
TECH. SPEC. FOR CHARACTERIZATION	see page 811
OIL TESTING CONDITIONS	ISO VG 46 cSt
SEAL KIT CODE	SK.067 (standard sealing NBR-BUNA-N)
WEIGHT	0,338 kg

ORDERING CODE

S P C 4

VALVE BASIC CODE

M 3 3

MARKING

0 = Standard factory marking.
Customized marking can be done upon request.

SIZE

METRIC M33x2 with Ø28 and Ø27 nose sizes

BIAS SPRING OPTIONS

Spring model code	Cracking pressure (bar)
Y	0,5
N	1,0
S	2,5
B	3,0
P	5,0
G	8,0
V	9,0

Specifications may change without notice.