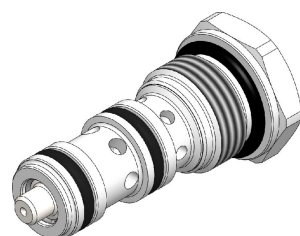


# SPC4.M18 VALVE SERIES

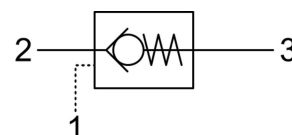
METRIC Cartridge - 350 bar

Direct acting check valve

Pilot piston to open



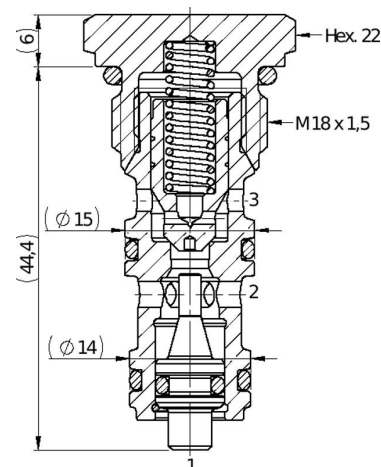
HYDRAULIC SYMBOL



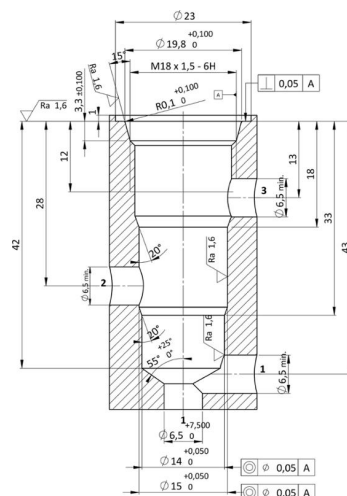
## DESCRIPTION

Cartridge style, normally closed, single pilot check valve. Cartridge is closed until sufficient pressure is applied on port 2 to reach the bias spring setting, lift the poppet and allow free flow to 3. The valve is normally closed from 3 to 2. When sufficient pressure is applied on port 1, the pilot piston lifts the poppet from its seat and allows flow from 3 to 2. Very limited leakage in the check condition.

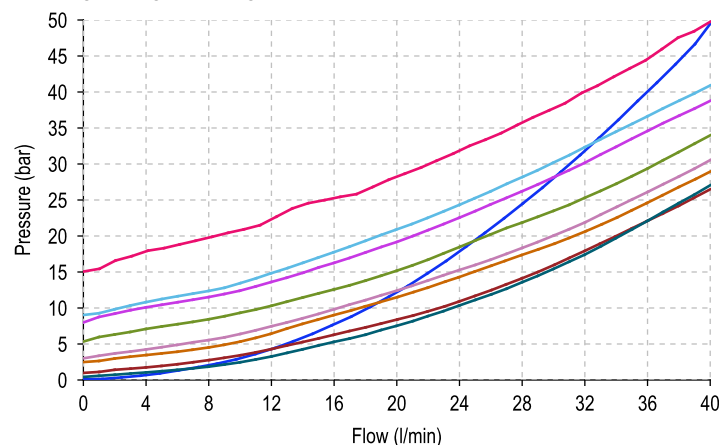
## CROSS SECTION



## CAVITY VH079



## PERFORMANCE DETAILS



**NOTE**  
The performance chart illustrates flow handling capacity for significant spring options. p/Q curves are recorded at T<sub>Oil</sub> = 40°C and 46 cSt.

### LEGEND

- Spring Y
- Spring N
- Spring S
- Spring B
- Spring P
- Spring G
- Spring V
- Spring W
- 3vs2 Piloted

## TECHNICAL DATA

MAXIMUM OPERATING PRESSURE	350 bar
MAXIMUM FLOW	40 l/min
MAXIMUM INTERNAL LEAKAGE	0,10 cm <sup>3</sup> / min @ 10 bar 0,10 cm <sup>3</sup> / min @ 350 bar
PILOT RATIO	3,2:1
EXTERNAL COMPONENT TREATMENT	Zn/Fe - standard (96h) Zn/Ni (720h) (Upon customer request)
O-RING TEMPERATURE RANGE	-30° C to 110° C (standard sealing NBR - BUNA - N) -35° C to 140° C (HNBR - Upon customer request) -23° C to 225° C (FKM - Upon customer request)
OIL TEMPERATURE RANGE	-30° C to 110° C
FLUIDS	Mineral - based or synthetics with lubricating properties
VISCOSITIES	7,4 to 420 cSt
FILTRATION	20/18/15 ISO 4406 (maximum filtration admitted)
ORIENTATION	No restrictions
INSTALLATION TORQUE	35-40 Nm  Hex.22
TECH. SPEC. FOR CHARACTERIZATION	see page 811
OIL TESTING CONDITIONS	ISO VG 46 cSt
SEAL KIT CODE	SK.156 (standard sealing NBR-BUNA-N)
WEIGHT	0,060 kg

## ORDERING CODE

**S P C 4**

VALVE BASIC CODE

**M 1 8**

### OPTIONS

4 = Standard configuration

6 = Without O-Ring on the pilot piston

**0 \***

### MARKING

0 = Standard factory marking.  
Customized marking can be done upon request.

### SIZE

METRIC M18x1,5 with Ø15 and Ø14 nose sizes

**0 0 0**

000 = Standard configuration.

## BIAS SPRING OPTIONS

Spring model code	Cracking pressure (bar)	Spring model code	Cracking pressure (bar)
Y	<0,5	W	15,0
N	1,0		
S	2,5		
B	3,0		
P	5,0		
G	8,0		
V	9,0		

Specifications may change without notice.