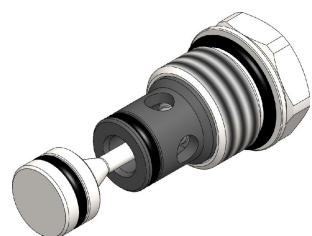
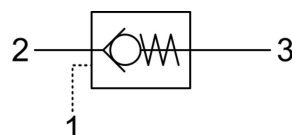


SPCO.S10 VALVE SERIES

Hybrid SAE10 Cartridge - 420 bar
Direct acting check valve
Pilot piston to open



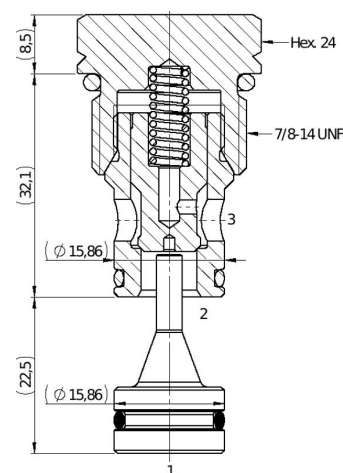
HYDRAULIC SYMBOL



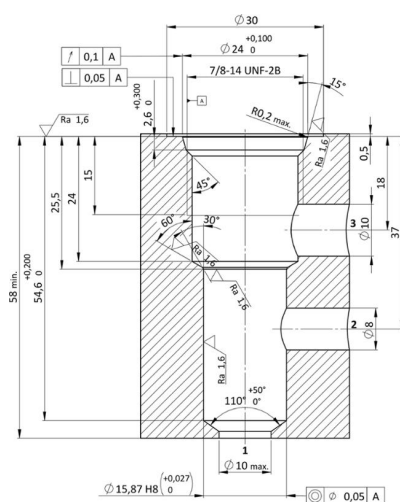
DESCRIPTION

Normally closed, single pilot check valve. Cartridge is closed until sufficient pressure is applied on port 2 to reach the bias spring setting, lift the poppet and allow free flow to 3. The valve is normally closed from 3 to 2. When sufficient pressure is applied on port 1, the pilot piston lifts the poppet from its seat and allows flow from 3 to 2. Very limited leakage in the check condition.

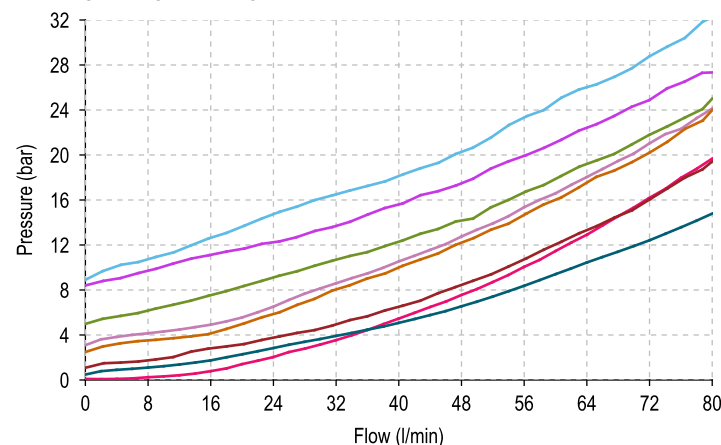
CROSS SECTION



CAVITY VH146



PERFORMANCE DETAILS



NOTE
The performance chart illustrates flow handling capacity for significant spring options.
p/Q curves are recorded at TOil = 40°C and 46 cSt.

LEGEND
— Spring Y — Spring P
— Spring N — Spring G
— Spring S — Spring V
— Spring B — 3vs2 Piloted

TECHNICAL DATA

MAXIMUM OPERATING PRESSURE	420 bar
MAXIMUM FLOW	80 l/min
MAXIMUM INTERNAL LEAKAGE	0,10 cm ³ / min @ 10 bar 0,10 cm ³ / min @ 420 bar
PILOT RATIO	3,9:1
EXTERNAL COMPONENT TREATMENT	Zn/Fe - standard (96h) Zn/Ni (720h) (Upon customer request)
O-RING TEMPERATURE RANGE	-30° C to 110° C (standard sealing NBR - BUNA - N) -35° C to 140° C (HNBR - Upon customer request) -23° C to 225° C (FKM - Upon customer request)
OIL TEMPERATURE RANGE	-30° C to 110° C
FLUIDS	Mineral - based or synthetics with lubricating properties
VISCOSITIES	7,4 to 420 cSt
FILTRATION	20/18/15 ISO 4406 (maximum filtration admitted)
ORIENTATION	No restrictions
INSTALLATION TORQUE	55-65 Nm Hex.24
TECH. SPEC. FOR CHARACTERIZATION	see page 811
OIL TESTING CONDITIONS	ISO VG 46 cSt
SEAL KIT CODE	SK.081 (standard sealing NBR-BUNA-N)
WEIGHT	0,100 kg

ORDERING CODE

S P C O

VALVE BASIC CODE

OPTIONS

0 = Standard configuration
B = Without O-Ring on the pilot piston

S 1 0

MARKING

0 = Standard factory marking.
Customized marking can be done upon request.

SIZE

7/8-14 UNF with Ø15,86 nose size

BIAS SPRING OPTIONS

Spring model code	Cracking pressure (bar)
Y	0,5
N	1,0
S	2,5
B	3,0
P	5,0
G	8,0
V	9,0

000 = Standard configuration.

Specifications may change without notice.