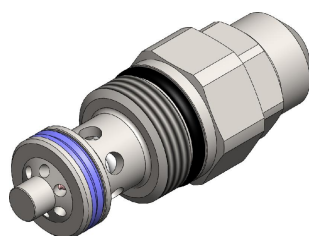


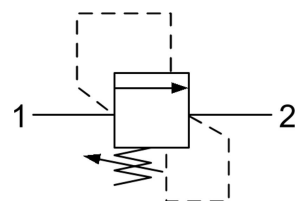
RVS4.M30 VALVE SERIES

METRIC Cartridge - 350 bar

Direct acting - Poppet type



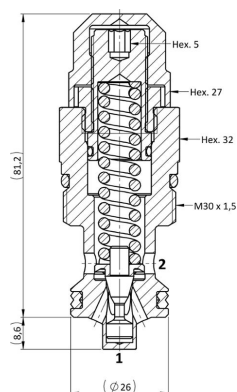
HYDRAULIC SYMBOL



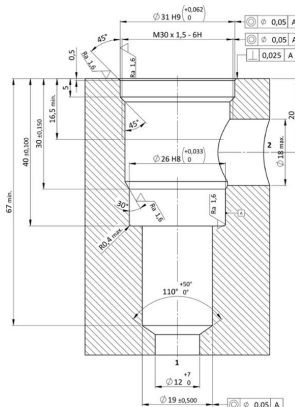
DESCRIPTION

A screw-in, cartridge style, direct acting, poppet type, normally closed hydraulic relief valve. It's typically used to protect hydraulic components from pressure transients. When the pressure at the Inlet (1) reaches the valve setting, the valve starts to open to tank (2) throttling flow to minimize the pressure rise. The innovative geometry of the deflector provides in fact a very low rise rate, and the poppet design guarantees great stability. The cartridge offers quick response to load changes in hydraulic circuits requiring low internal leakage as well as limited hysteresis.

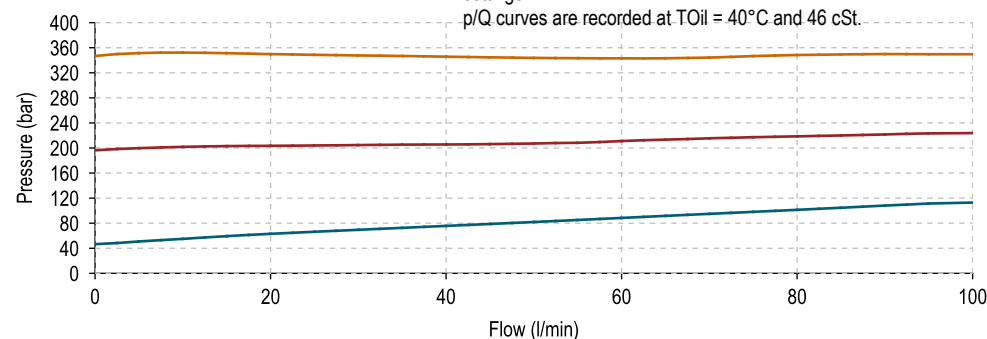
CROSS SECTION



CAVITY VH065



PERFORMANCE DETAILS





— Minimum nominal setting pressure — Maximum nominal setting pressure
— Medium nominal setting pressure

NOTE

The performance chart illustrates flow handling capacity at various settings.
p/Q curves are recorded at T_{Oil} = 40°C and 46 cSt.

TECHNICAL DATA

MAXIMUM OPERATING PRESSURE	350 bar
MAXIMUM FLOW	100 l/min
SETTING PRESSURE	see table below
MAXIMUM INTERNAL LEAKAGE	1 cm ³ / min to 80 % of nominal set point
EXTERNAL COMPONENT TREATMENT	Zn/Fe - standard (96h) Zn/Ni (720h) (Upon customer request)
O-RING TEMPERATURE RANGE	-30° C to 110° C (standard sealing NBR - BUNA - N) -35° C to 140° C (HNBR - Upon customer request) -23° C to 225° C (FKM - Upon customer request)
OIL TEMPERATURE RANGE	-30° C to 110° C
PRESSURE SETTINGS ESTABLISHED	5 l/min
RESEAT PRESSURE	nominal 90% of cracking pressure
FLUIDS	Mineral - based or synthetics with lubricating properties
VISCOSITIES	7,4 to 420 cSt
FILTRATION	20/18/15 ISO 4406 (maximum filtration admitted)
ORIENTATION	No restrictions
INSTALLATION TORQUE	55-65 Nm  Hex.32
NUT TIGHTENING TORQUE	25-30 Nm  Hex.27
TECH. SPEC. FOR CHARACTERIZATION	see page 811
OIL TESTING CONDITIONS	ISO VG 46 cSt
SEAL KIT CODE	SK.051 (standard sealing NBR-BUNA-N)
WEIGHT	0.307 kg

ORDERING CODE

VALVE BASIC CODE

R	V	S	4
---	---	---	---

MARKING

M	3	0
---	---	---

0 = Standard factory marking.
Customized marking can be done upon request.

BIAS SPRING OPTIONS

0	*	*
---	---	---

SETTING PRESSURE IN [BAR]
000 = No specific setting required.

SIZE

METRIC M30x1,5 with
Ø26 nose size

Specifications may change without notice.