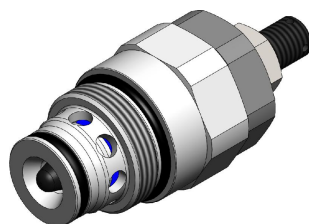


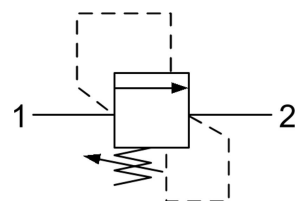
RVBO.M24 VALVE SERIES

METRIC Cartridge - 300 bar

Direct acting - Poppet type



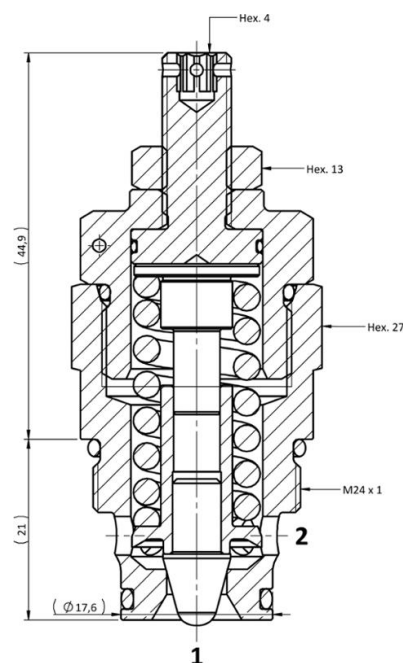
HYDRAULIC SYMBOL



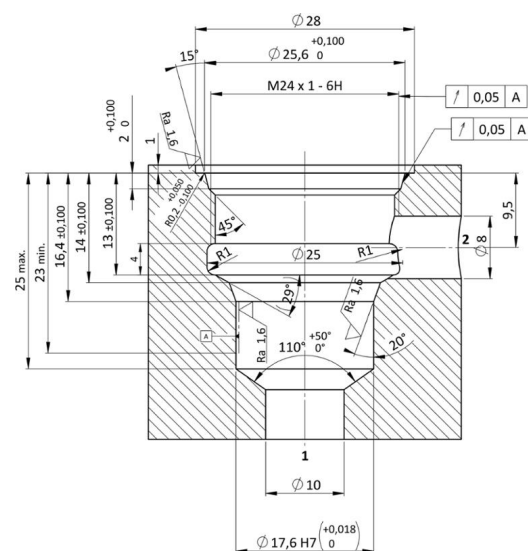
DESCRIPTION

A screw-in, cartridge style, direct acting, poppet type, normally closed hydraulic relief valve. It's typically used to protect hydraulic components from pressure transients. When the pressure at the Inlet (1) reaches the valve setting, the valve starts to open to tank (2) and thanks to the effect of the deflector integrated into the poppet it provides a limited pressure rise. The cartridge offers excellent response to load changes in hydraulic circuits requiring low internal leakage as well as limited hysteresis. Innovative design on internal dampening part guarantees great stability.



CROSS SECTION



CAVITY VH077



TECHNICAL DATA

MAXIMUM OPERATING PRESSURE	300 bar
MAXIMUM FLOW	85 l/min
SETTING PRESSURE	see table below
MAXIMUM INTERNAL LEAKAGE	1 cm ³ / min at 80 % of nominal set point
EXTERNAL COMPONENT TREATMENT	Zn/Fe - standard (96h) Zn/Ni (720h) (Upon customer request)
O-RING TEMPERATURE RANGE	-30° C to 110° C (standard sealing NBR - BUNA - N) -35° C to 140° C (HNBR - Upon customer request) -23° C to 225° C (FKM - Upon customer request)
OIL TEMPERATURE RANGE	-30° C to 110° C
PRESSURE SETTINGS ESTABLISHED	5 l/min
RESEAT PRESSURE	nominal 90% of cracking pressure
FLUIDS	Mineral - based or synthetics with lubricating properties
VISCOSITIES	7,4 to 420 cSt
FILTRATION	20/18/15 ISO 4406 (maximum filtration admitted)
ORIENTATION	No restrictions
INSTALLATION TORQUE	40-45 Nm  Hex.27
NUT TIGHTENING TORQUE	10-12 Nm  Hex.13
TECH. SPEC. FOR CHARACTERIZATION	see page 811
OIL TESTING CONDITIONS	ISO VG 46 cSt
SEAL KIT CODE	SK.054 (standard sealing NBR-BUNA-N)
WIRE SEALS TAMPER PROOF	Suitable design upon request
WEIGHT	0,160 kg

ORDERING CODE

VALVE BASIC CODE

R	V	B	0
---	---	---	---

MARKING
 0 = Standard factory marking.
 Customized marking can be done upon request.

M	2	4
---	---	---

BIAS SPRING OPTIONS

0	*
---	---

SETTING PRESSURE IN [BAR]
 000 = No specific setting required.

*	*	*
---	---	---

SIZE

METRIC M24x1 with
Ø17,6 nose size

Spring model code	Setting pressure range (bar)	Pressure increment per turn [bar/turn]
Y	20-70	18
N	71-150	22
B	151-215	28
G	216-265	42
V	266-300	49

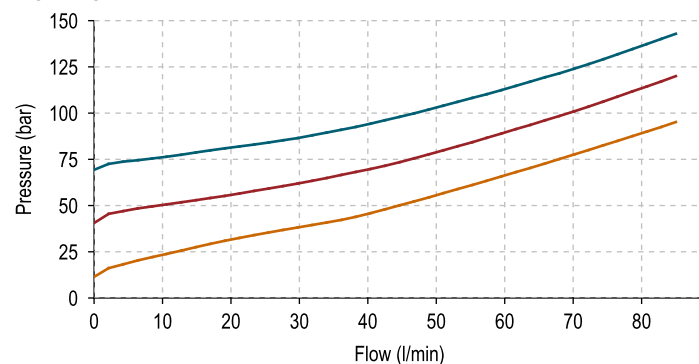
RVB0.M24 SPRINGS' GRAPHS

The performance chart illustrates flow handling capacity for significant spring bias options. p/Q curves are recorded at T_{Oil} = 40°C and 46 cSt.

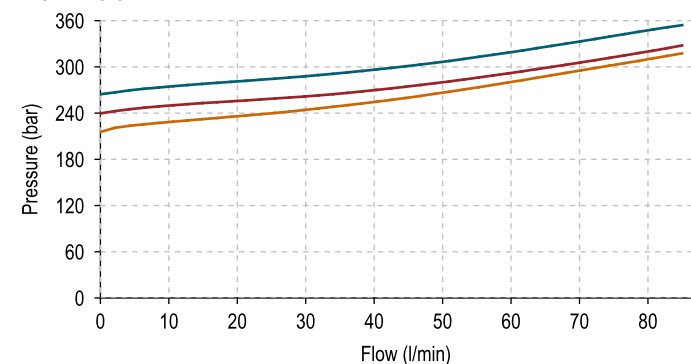
LEGEND

- Maximum setting pressure range
- Medium setting pressure range
- Minimum setting pressure range

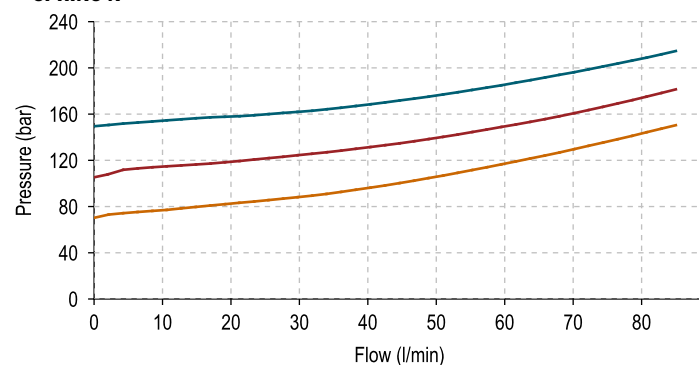
SPRING Y



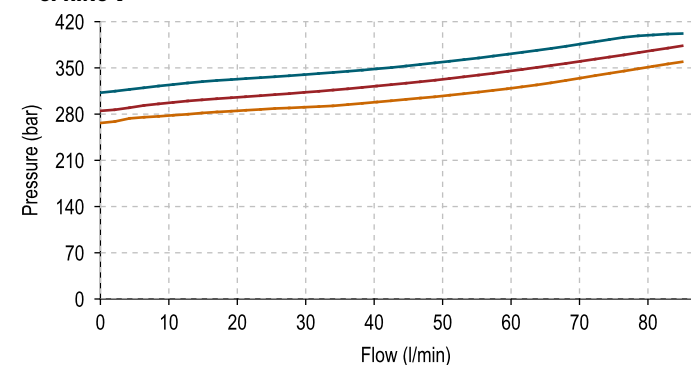
SPRING G



SPRING N



SPRING V



SPRING B

