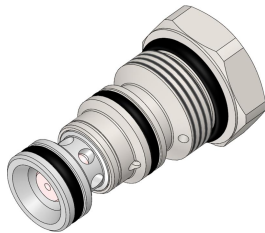
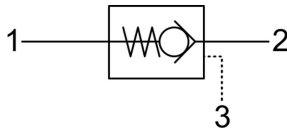


PCR2.M20 VALVE SERIES

METRIC Cartridge - 350 bar
Direct acting check valve
Pilot piston to open



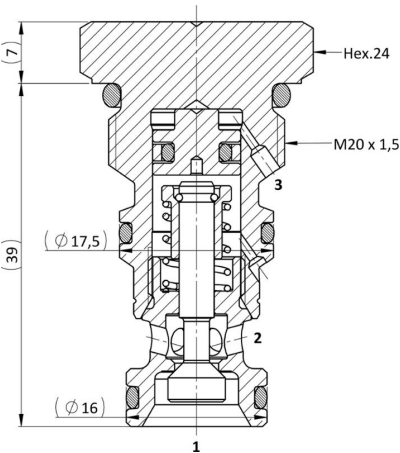
HYDRAULIC SYMBOL



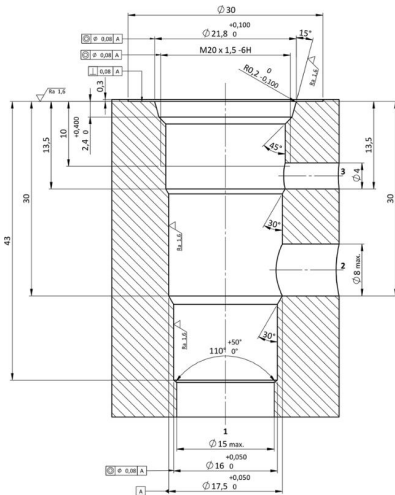
DESCRIPTION

Cartridge style, normally closed, single pilot check valve. Cartridge is closed until sufficient pressure is applied on port 2 to reach the bias spring setting, lift the poppet and allow free flow to 1. The valve is normally closed from 1 to 2. When sufficient pressure is applied on port 3, the pilot piston lifts the poppet from its seat and allows flow from 1 to 2. Very limited leakage in the check condition. Version with higher pilot ratio.

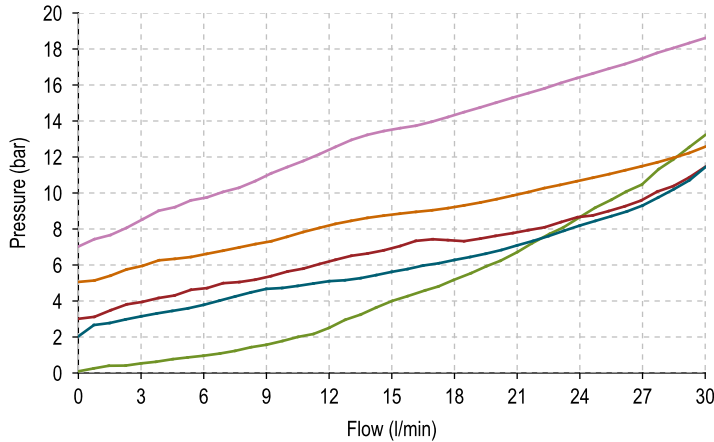
CROSS SECTION



CAVITY VH209



PERFORMANCE DETAILS



NOTE
The performance chart illustrates flow handling capacity for significant spring options.
p/Q curves are recorded at TOil = 40°C and 46 cSt.

LEGEND
— Spring Y — 1vs2 Piloted
— Spring N
— Spring B
— Spring G

TECHNICAL DATA

MAXIMUM OPERATING PRESSURE	350 bar
MAXIMUM FLOW	30 l/min
MAXIMUM INTERNAL LEAKAGE	0,10 cm³ / min @ 10 bar 0,10 cm³ / min @ 350 bar
PILOT RATIO	3,9:1
EXTERNAL COMPONENT TREATMENT	Zn/Fe - standard (96h) Zn/Ni (720h) (Upon customer request)
O-RING TEMPERATURE RANGE	-30° C to 110° C (standard sealing NBR - BUNA - N) -35° C to 140° C (HNBR - Upon customer request) -23° C to 225° C (FKM - Upon customer request)
OIL TEMPERATURE RANGE	-30° C to 110° C
FLUIDS	Mineral - based or synthetics with lubricating properties
VISCOSITIES	7,4 to 420 cSt
FILTRATION	20/18/15 ISO 4406 (maximum filtration admitted)
ORIENTATION	No restrictions
INSTALLATION TORQUE	40-45 Nm Hex.24
TECH. SPEC. FOR CHARACTERIZATION	see page 811
OIL TESTING CONDITIONS	ISO VG 46 cSt
SEAL KIT CODE	SK.104 (standard sealing NBR-BUNA-N)
WEIGHT	0,075 kg

ORDERING CODE

P C R 2

M 2 0

0 *

0 0 0

VALVE BASIC CODE

MARKING

0 = Standard factory marking.
Customized marking can be done upon request.

SIZE

METRIC M20x1,5 with Ø17,5 and Ø16 nose sizes

000 = Standard configuration.

BIAS SPRING OPTIONS

Spring model code	Cracking pressure (bar)
Y	2,0
N	3,0
B	5,0
G	7,0

Specifications may change without notice.