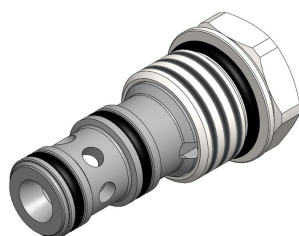
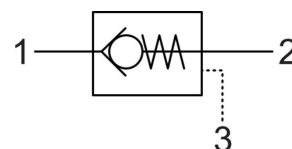


# PCCO.S10 VALVE SERIES

SAE Cartridge - 350 bar  
Direct acting check valve  
Pilot piston to close



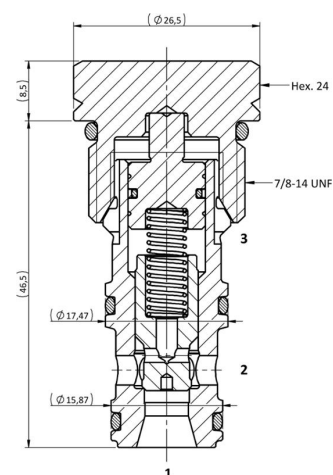
HYDRAULIC SYMBOL



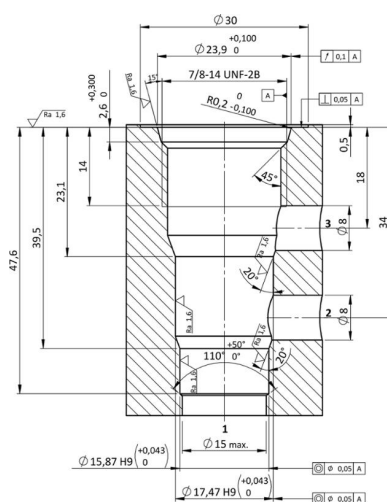
## DESCRIPTION

Cartridge style, normally closed, single pilot check valve. Cartridge is closed until sufficient pressure is applied on port 1 to reach the bias spring setting, lift the poppet and allow free flow to 2. The valve is normally closed from 2 to 1. When sufficient pressure is applied on port 3, the pilot piston moves the poppet to its seat and stops flow from 1 to 2. Limited leakage when valve is closed.

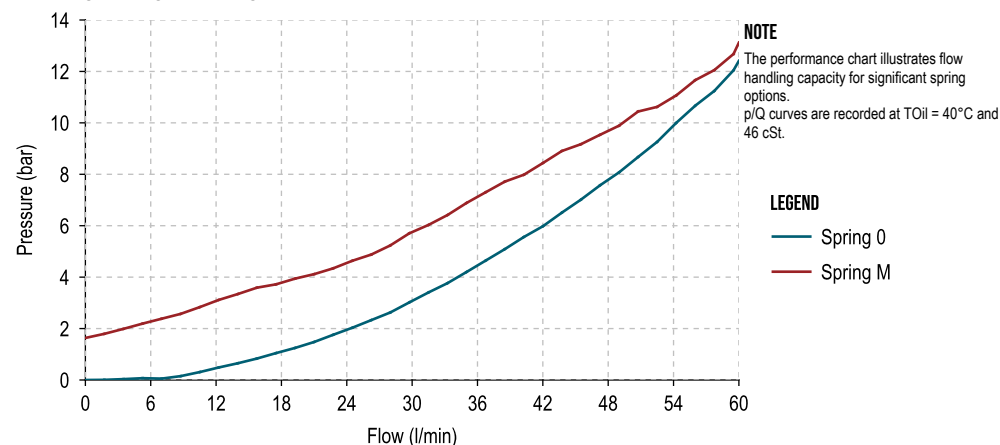
## CROSS SECTION



## CAVITY SAE10-2



## PERFORMANCE DETAILS



## TECHNICAL DATA

MAXIMUM OPERATING PRESSURE	350 bar
MAXIMUM FLOW	60 l/min
MAXIMUM INTERNAL LEAKAGE	0,25 cm <sup>3</sup> / min @ 10 bar 0,25 cm <sup>3</sup> / min @ 350 bar
PILOT RATIO	2,8:1
EXTERNAL COMPONENT TREATMENT	Zn/Fe - standard (96h) Zn/Ni (720h) (Upon customer request)
O-RING TEMPERATURE RANGE	-30° C to 110° C (standard sealing NBR - BUNA - N) -35° C to 140° C (HNBR - Upon customer request) -23° C to 225° C (FKM - Upon customer request)
OIL TEMPERATURE RANGE	-30° C to 110° C
FLUIDS	Mineral - based or synthetics with lubricating properties
VISCOSITIES	7,4 to -420 cSt
FILTRATION	20/18/15 ISO 4406 (maximum filtration admitted)
ORIENTATION	No restrictions
INSTALLATION TORQUE	55-65 Nm  Hex.24
TECH. SPEC. FOR CHARACTERIZATION	see page 811
OIL TESTING CONDITIONS	ISO VG 46 cSt
SEAL KIT CODE	SK.049 (standard sealing NBR-BUNA-N)
WEIGHT	0,110 kg

## ORDERING CODE

P C C O

VALVE BASIC CODE  
0 = Standard configuration

S 1 0

MARKING  
0 = Standard factory marking.  
Customized marking can be done upon request.

SIZE  
7/8-14 UNF with Ø17,47 and  
Ø15,87 nose sizes

## BIAS SPRING OPTIONS

Spring model code	Cracking pressure (bar)
0	0 (No spring)
M	1,7

0 \* 0 0 0

000 = Standard configuration