

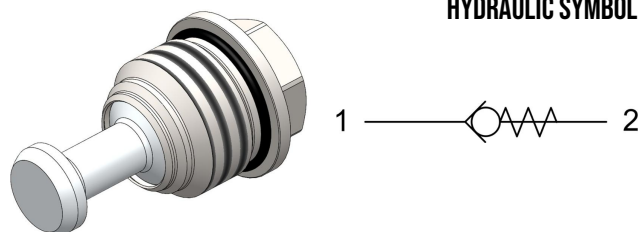
ICV6.M27 VALVE SERIES

METRIC Insert - 420 bar

Direct acting - Poppet type

Hybrid cavity - Compact size

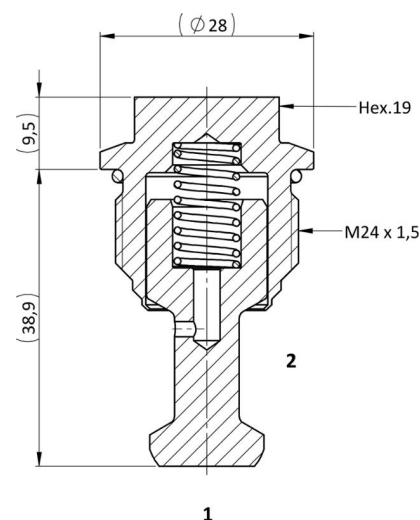
HYDRAULIC SYMBOL



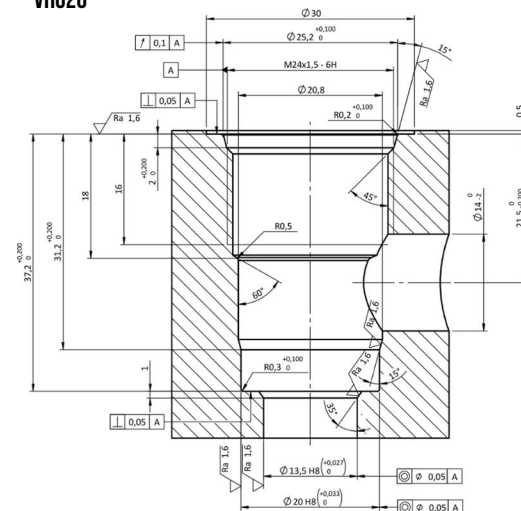
DESCRIPTION

A screw-in, direct acting, poppet type check valve. Main use is as a blocking or load-holding device. The ICV6.M27 allows flow passage from port 1 to 2: the cartridge has a fully guided check which is spring-biased closed until sufficient pressure is applied at port 1 to open to 2. The flow is blocked in the opposite direction (2 to 1). Insert type valve: the poppet seals directly against the cavity.

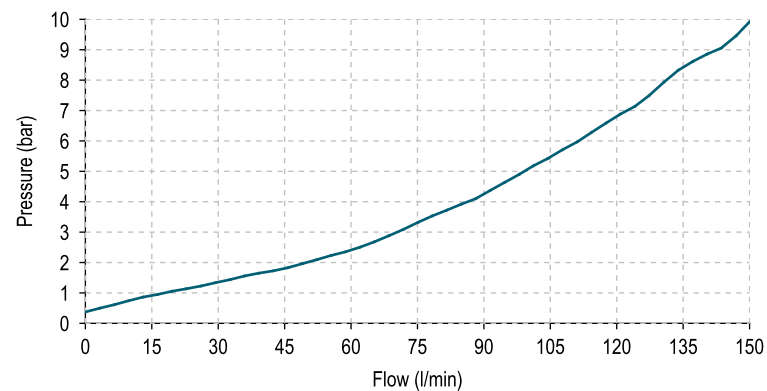
CROSS SECTION



CAVITY VH026



PERFORMANCE DETAILS



LEGEND

— Spring N

TECHNICAL DATA

MAXIMUM OPERATING PRESSURE	420 bar
MAXIMUM FLOW	150 l/min
CRACKING PRESSURE	see table below
MAXIMUM INTERNAL LEAKAGE	0,10 cm ³ / min @ 10 bar 0,10 cm ³ / min @ 420 bar
EXTERNAL COMPONENT TREATMENT	Zn/Fe - standard (96h) Zn/Ni (720h) (Upon customer request)
O-RING TEMPERATURE RANGE	-30° C to 110° C (standard sealing NBR - BUNA - N) -35° C to 140° C (HNBR - Upon customer request) -23° C to 225° C (FKM - Upon customer request)
OIL TEMPERATURE RANGE	-30° C to 110° C
FLUIDS	Mineral - based or synthetics with lubricating properties
VISCOSITIES	7,4 to 420 cSt
FILTRATION	20/18/15 ISO 4406 (maximum filtration admitted)
ORIENTATION	No restrictions
INSTALLATION TORQUE	50-55 Nm Hex.19
TECH. SPEC. FOR CHARACTERIZATION	see page 811
OIL TESTING CONDITIONS	ISO VG 46 cSt
SEAL KIT CODE	SK.009 (standard sealing NBR-BUNA-N)
COINING KIT	CK.005
WEIGHT	0,087 kg

ORDERING CODE

I	C	V	6	.	M	2	7	.	0	*	.	0	0	0
VALVE BASIC CODE					MARKING				000 = Standard configuration.					

SIZE
METRIC M24x1,5

BIAS SPRING OPTIONS

Spring model code	Cracking pressure (bar)
N	<0,5