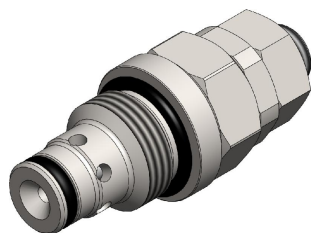


FRT4.S08 VALVE SERIES

SAE Cartridge - 350 bar
Direct acting - Poppet Type



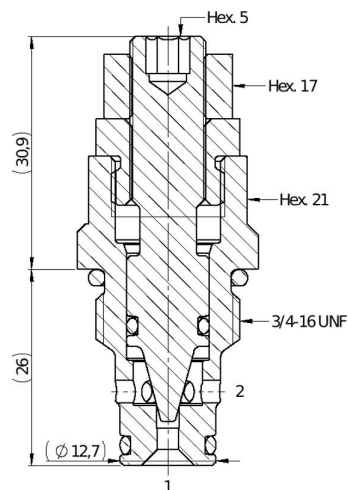
HYDRAULIC SYMBOL



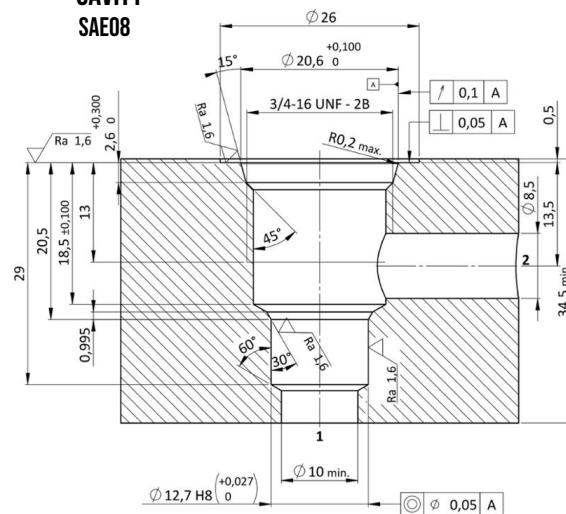
DESCRIPTION

A cartridge style, screw in, non pressure compensated, adjustable flow restrictor valve. Once the flow is adjusted to desired value, both the 1 to 2 and 2 to 1 flow paths are permitted. Smaller sealing area for finer flow adjustment.

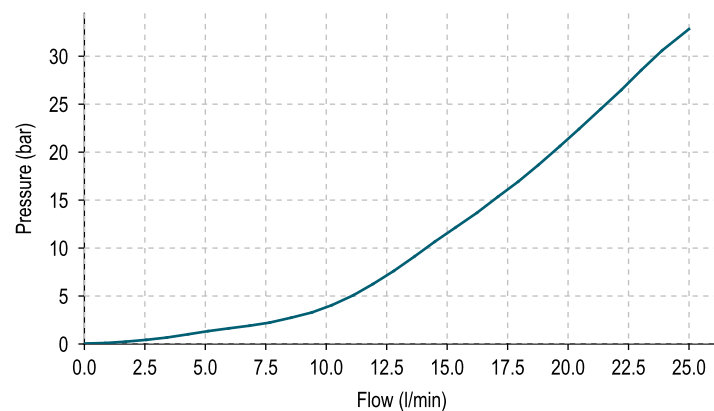
CROSS SECTION



CAVITY
SAE08



PERFORMANCE DETAILS



NOTE
The p/Q performance illustrated in the chart are the same in both directions. p/Q curve is recorded at TOil = 40°C and 46 cSt.

LEGEND

— 1vs2

TECHNICAL DATA

MAXIMUM OPERATING PRESSURE	350 bar
MAXIMUM FLOW	25 l/min
EXTERNAL COMPONENT TREATMENT	Zn/Fe - standard (96h) Zn/Ni (720h) (Upon customer request)
O-RING TEMPERATURE RANGE	-30° C to 110° C (standard sealing NBR - BUNA - N) -35° C to 140° C (HNBR - Upon customer request) -23° C to 225° C (FKM - Upon customer request)
OIL TEMPERATURE RANGE	-30° C to 110° C
FLUIDS	Mineral - based or synthetics with lubricating properties
VISCOSITIES	7,4 to 420 cSt
FILTRATION	20/18/15 ISO 4406 (maximum filtration admitted)
ORIENTATION	No restrictions
INSTALLATION TORQUE	40-45 Nm Hex.21
TIGHTENING TORQUE NUT	15-20 Nm Hex.17
TECH. SPEC. FOR CHARACTERIZATION	see page 811
OIL TESTING CONDITIONS	ISO VG 46 cSt
SEAL KIT CODE	SK.003 (standard sealing NBR-BUNA-N)
WEIGHT	0,100 kg

ORDERING CODE

F R T 4

VALVE BASIC CODE

S 0 8

SIZE

S08 = 3/4-16 UNF with Ø12,7 nose size

0 *

MARKING

0 = Standard factory marking.
Customized marking can be done upon request.

* 0 0

000 = Standard configuration.
100 = Fine regulation

FLOW ADJUSTMENT

W = Top plastic knob + plastic counter knob

V = Top plastic knob

0 = Hex allen head