

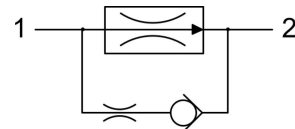
FRS*.S04 VALVE SERIES

Hybrid SAE04 Insert - 250 bar

Direct acting - Pressure Compensated



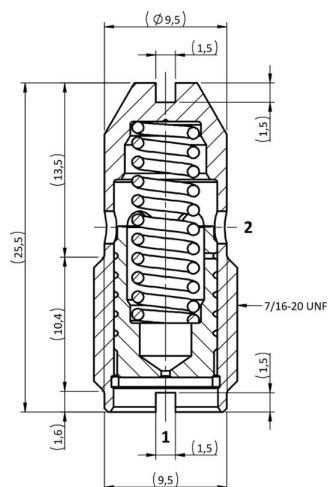
HYDRAULIC SYMBOL



DESCRIPTION

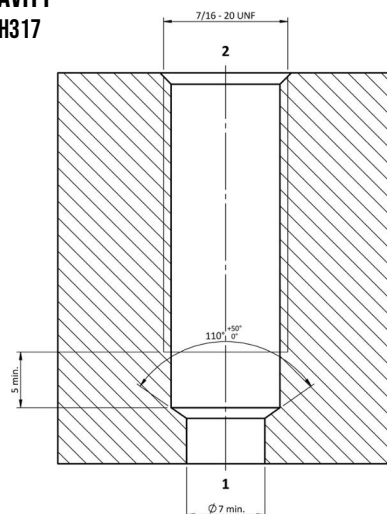
A direct acting, screw-in insert type, 2-way pressure compensated flow control valve. The flow rate of this valve in the 1 to 2 flow path is largely independent of the system pressure and is determined by the dimension of a calibrated orifice. The valve cannot be adjusted for variable flow output. Free flow in the 2 to 1 path is allowed and not pressure compensated.

CROSS SECTION

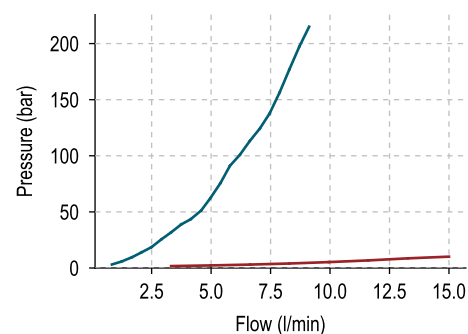


CAVITY

VH317



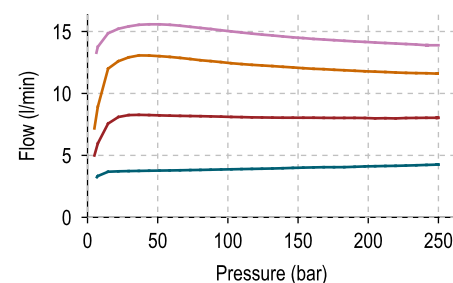
PERFORMANCE DETAILS



— 2vs1 - 020
— 2vs1 - 150

NOTE

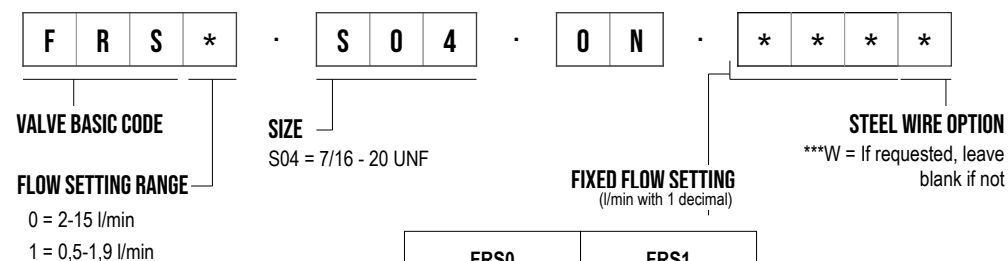
The performance chart illustrates flow handling capacity in the pressure compensated mode for a few significant flow settings. p.Q curves are recorded from 1 to 2 port at TOil = 40°C and 46 cSt.



- Q_regulated = 4 l/min
- Q_regulated = 8 l/min
- Q_regulated = 12 l/min
- Q_regulated = 15 l/min

TECHNICAL DATA

MAXIMUM OPERATING PRESSURE	250 bar (2 to 1 max working pressure 210bar)
MAXIMUM FLOW	15 l/min
EXTERNAL COMPONENT TREATMENT	Oxide burnished
OIL TEMPERATURE RANGE	-30° C to 110° C
FLUIDS	Mineral - based or synthetics with lubricating properties
VISCOSITIES	7,4 to 420 cSt
ORIENTATION	No restrictions
INSTALLATION TORQUE	1-3 Nm
TECH. SPEC. FOR CHARACTERIZATION	see page 811
OIL TESTING CONDITIONS	ISO VG 46 cSt
WEIGHT	0,010 kg

ORDERING CODE

FRS0		FRS1	
2 l/min	020	0,6 l/min	006
3 l/min	030	0,8 l/min	008
4 l/min	040	1,0 l/min	010
5 l/min	050	1,2 l/min	012
6 l/min	060	1,4 l/min	014
7 l/min	070	1,6 l/min	016
8 l/min	080	1,8 l/min	018
9 l/min	090		
10 l/min	100		
11 l/min	110		
12 l/min	120		
15 l/min	150		

NOTE

Customized fixed flow can be provided upon request.

Specifications may change without notice.