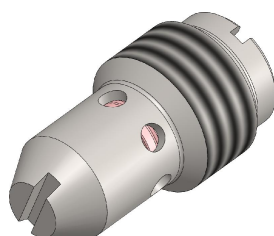


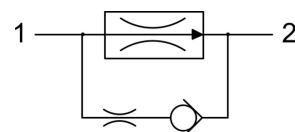
FRS*.G14 VALVE SERIES

GAS Insert - 250 bar

Direct acting - Pressure Compensated



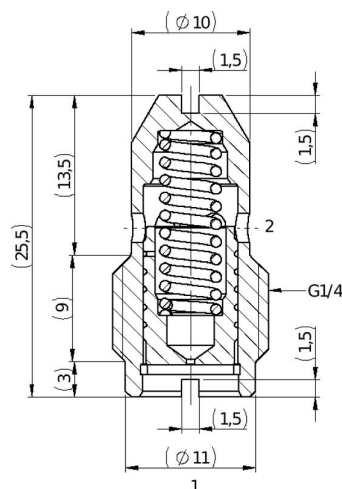
HYDRAULIC SYMBOL



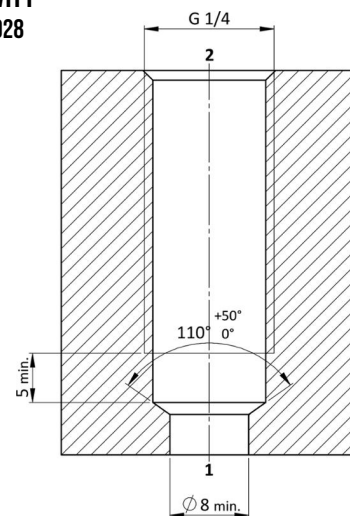
DESCRIPTION

A direct acting, screw-in insert type, 2-way pressure compensated flow control valve. The flow rate of this valve in the 1 to 2 flow path is largely independent of the system pressure and is determined by the dimension of a calibrated orifice. The valve cannot be adjusted for variable flow output. Free flow in the 2 to 1 path is allowed and not pressure compensated.

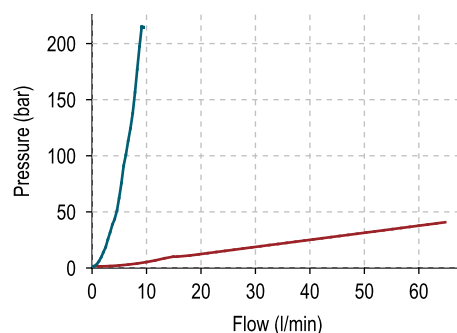
CROSS SECTION



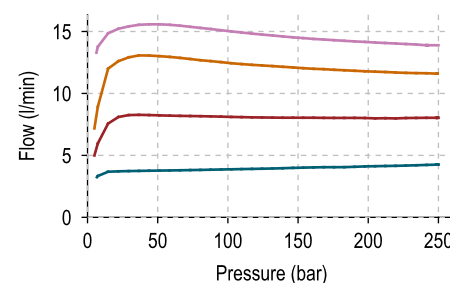
CAVITY VH028



PERFORMANCE DETAILS



— 2vs1 - 020
— 2vs1 - 150



— Q_{regulated} = 4 l/min
— Q_{regulated} = 8 l/min
— Q_{regulated} = 12 l/min
— Q_{regulated} = 15 l/min

NOTE

The performance chart illustrates flow handling capacity in the pressure compensated mode for a few significant flow settings. p, Q curves are recorded from 1 to 2 port at TOil = 40°C and 46 cSt.

TECHNICAL DATA

MAXIMUM OPERATING PRESSURE	250 bar (2 to 1 max working pressure 210bar)
MAXIMUM FLOW	15 l/min
EXTERNAL COMPONENT TREATMENT	Oxide burnished
OIL TEMPERATURE RANGE	-30° C to 110° C
FLUIDS	Mineral - based or synthetics with lubricating properties
VISCOSITIES	7,4 to 420 cSt
FILTRATION	20/18/15 ISO 4406 (maximum filtration admitted)
ORIENTATION	No restrictions
INSTALLATION TORQUE	1-3 Nm
TECH. SPEC. FOR CHARACTERIZATION	see page 811
OIL TESTING CONDITIONS	ISO VG 46 cSt
WEIGHT	0,013 kg

ORDERING CODE

F R S *

VALVE BASIC CODE

FLOW SETTING RANGE

0 = 2-15 l/min

1 = 0,5-1,8 l/min

G 1 4

SIZE

G14 = GAS G1/4

0 N * * * *

FIXED FLOW SETTING
(l/min with 1 decimal)

STEEL WIRE OPTION

W = If requested, leave blank if not.

FRS0	FRS1
2 l/min 020	0,6 l/min 006
3 l/min 030	0,8 l/min 008
4 l/min 040	1,0 l/min 010
5 l/min 050	1,2 l/min 012
6 l/min 060	1,4 l/min 014
7 l/min 070	1,6 l/min 016
8 l/min 080	1,8 l/min 018
9 l/min 090	
10 l/min 100	
11 l/min 110	
12 l/min 120	
15 l/min 150	

NOTE

Customized fixed flow can be provided upon request.

Specifications may change without notice.