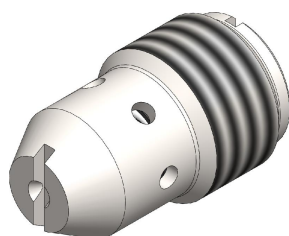


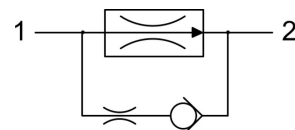
# FRS0.G38 VALVE SERIES

GAS Insert - 250 bar

Direct acting - Pressure Compensated



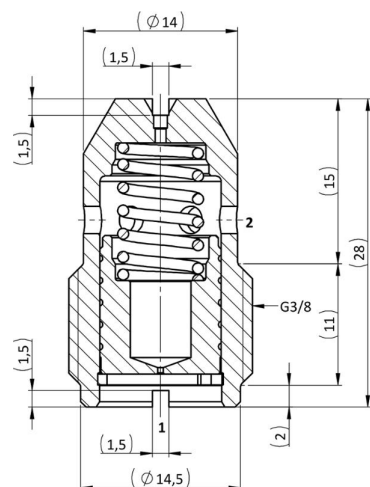
HYDRAULIC SYMBOL



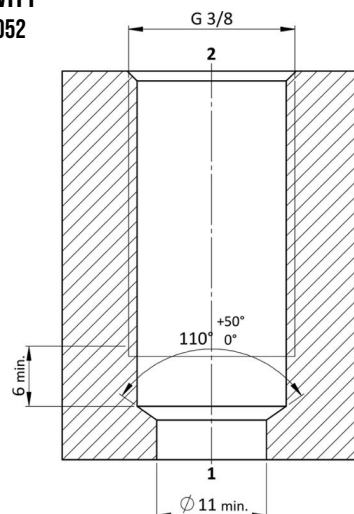
## DESCRIPTION

A direct acting, screw-in insert type, 2-way pressure compensated flow control valve. The flow rate of this valve in the 1 to 2 flow path is largely independent of the system pressure and is determined by the dimension of a calibrated orifice. The valve cannot be adjusted for variable flow output. Free flow in the 2 to 1 path is allowed and not pressure compensated.

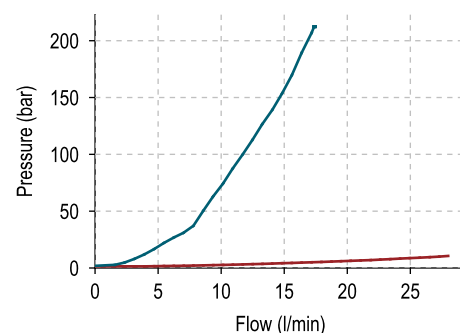
## CROSS SECTION



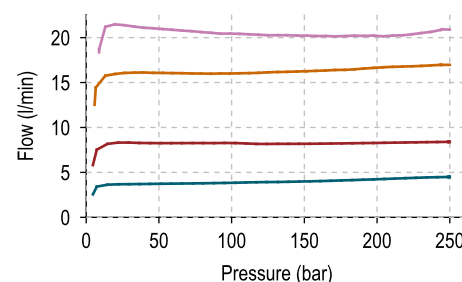
CAVITY  
VH052



## PERFORMANCE DETAILS



— 2vs1 - 030  
— 2vs1 - 200



—  $Q_{regulated} = 4$  l/min  
—  $Q_{regulated} = 8$  l/min  
—  $Q_{regulated} = 16$  l/min  
—  $Q_{regulated} = 20$  l/min

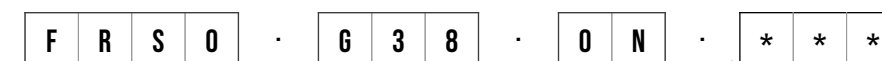
### NOTE

The performance chart illustrates flow handling capacity in the pressure compensated mode for a few significant flow settings. p,Q curves are recorded from 1 to 2 port at TOil = 40°C and 46 cSt.

## TECHNICAL DATA

MAXIMUM OPERATING PRESSURE	250 bar (2 to 1 max working pressure 210 bar)
MAXIMUM FLOW	28 l/min
EXTERNAL COMPONENT TREATMENT	Oxide burnished
OIL TEMPERATURE RANGE	-30° C to 110° C
FLUIDS	Mineral - based or synthetics with lubricating properties
VISCOSITIES	7,4 to 420 cSt
FILTRATION	20/18/15 ISO 4406 (maximum filtration admitted)
ORIENTATION	No restrictions
INSTALLATION TORQUE	5-8 Nm
TECH. SPEC. FOR CHARACTERIZATION	see page 811
OIL TESTING CONDITIONS	ISO VG 46 cSt
WEIGHT	0,027 kg

## ORDERING CODE



VALVE BASIC CODE

SIZE

G38 = GAS G3/8

FIXED FLOW SETTING  
(l/min with 1 decimal)

FRS0	
3 l/min	030
4 l/min	040
5 l/min	050
6 l/min	060
7 l/min	070
8 l/min	080
9 l/min	090
10 l/min	100
11 l/min	110
14 l/min	150
16 l/min	160
18 l/min	180
20 l/min	200
23 l/min	230
28 l/min	280

### NOTE

Customized fixed flow can be provided upon request.

Specifications may change without notice.