

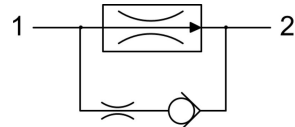
FRS0.G12 VALVE SERIES

GAS Insert - 250 bar

Direct acting - Pressure Compensated



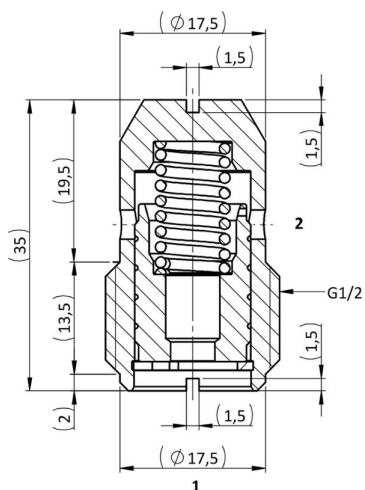
HYDRAULIC SYMBOL



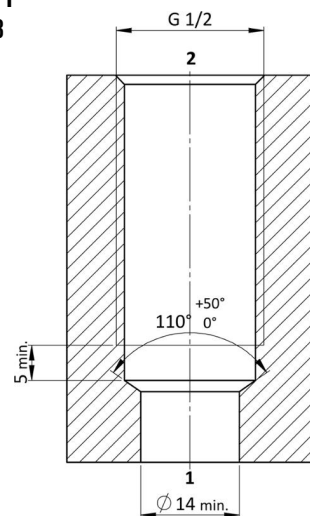
DESCRIPTION

A direct acting, screw-in insert type, 2-way pressure compensated flow control valve. The flow rate of this valve in the 1 to 2 flow path is largely independent of the system pressure and is determined by the dimension of a calibrated orifice. The valve cannot be adjusted for variable flow output. Free flow in the 2 to 1 path is allowed and not pressure compensated.

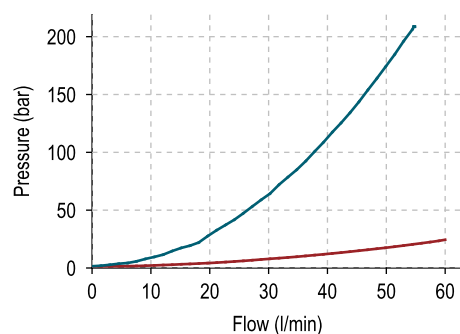
CROSS SECTION



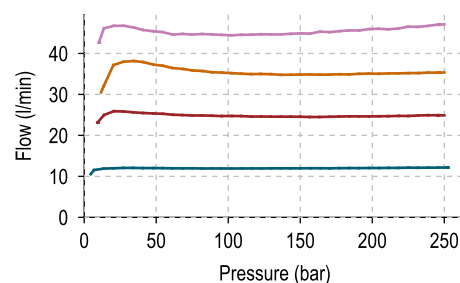
CAVITY
VH053



PERFORMANCE DETAILS



— 2vs1 - 100
— 2vs1 - 600



— $Q_{regulated} = 12 \text{ l/min}$
— $Q_{regulated} = 25 \text{ l/min}$
— $Q_{regulated} = 35 \text{ l/min}$
— $Q_{regulated} = 45 \text{ l/min}$

NOTE

The performance chart illustrates flow handling capacity in the pressure compensated mode for a few significant flow settings. p,Q curves are recorded from 1 to 2 port at TOil = 40°C and 46 cSt.

TECHNICAL DATA

MAXIMUM OPERATING PRESSURE	250 bar (2 to 1 max working pressure 210 bar)
MAXIMUM FLOW	45 l/min
EXTERNAL COMPONENT TREATMENT	Oxide burnished
OIL TEMPERATURE RANGE	-30° C to 110° C
FLUIDS	Mineral - based or synthetics with lubricating properties
VISCOSITIES	7,4 to 420 cSt
FILTRATION	20/18/15 ISO 4406 (maximum filtration admitted)
ORIENTATION	No restrictions
INSTALLATION TORQUE	8-12 Nm
TECH. SPEC. FOR CHARACTERIZATION	see page 811
OIL TESTING CONDITIONS	ISO VG 46 cSt
WEIGHT	0,054 kg

ORDERING CODE

F R S O

VALVE BASIC CODE

G 1 2

SIZE

G12 = GAS G1/2

0 N * * *

FIXED FLOW SETTING
(l/min with 1 decimal)

FRS0	
12 l/min	120
16 l/min	160
20 l/min	200
25 l/min	250
30 l/min	300
35 l/min	350
40 l/min	400
45 l/min	450

NOTE

Customized fixed flow can be provided upon request.

Specifications may change without notice.