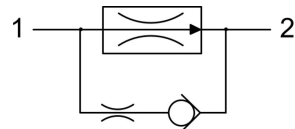


FRD*.S08 VALVE SERIES

Hybrid SAE08 Cartridge - 250 bar
Direct acting - Pressure Compensated



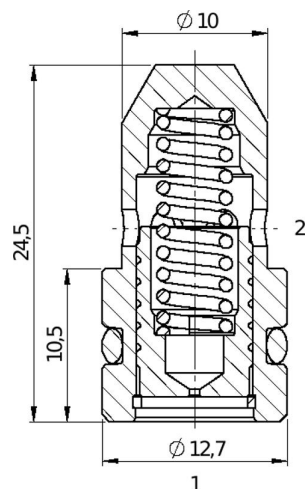
HYDRAULIC SYMBOL



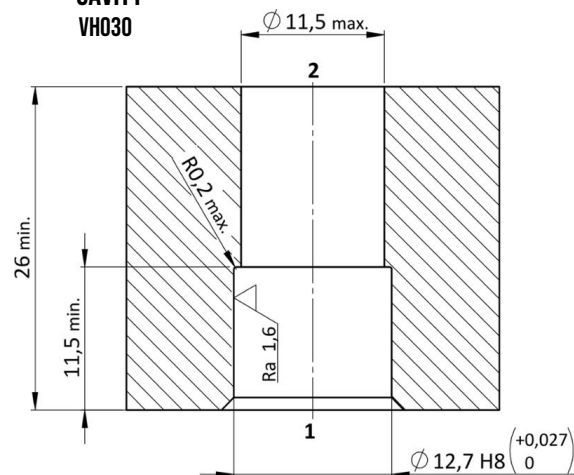
DESCRIPTION

A direct acting, drop-in insert type, 2-way pressure compensated flow control valve. The flow rate of this valve in the 1 to 2 flow path is largely independent of the system pressure and is determined by the dimension of a calibrated orifice. The valve cannot be adjusted for variable flow output. Free flow in the 2 to 1 path is allowed and not pressure compensated.

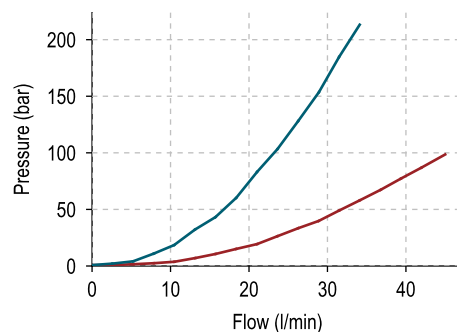
CROSS SECTION



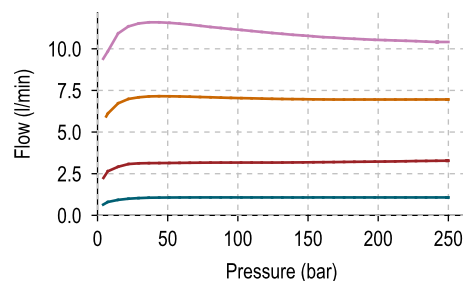
CAVITY
VH030



PERFORMANCE DETAILS



— 2vs1 - 070
— 2vs1 - 120



— $Q_{regulated} = 1$ l/min
— $Q_{regulated} = 3$ l/min
— $Q_{regulated} = 7$ l/min
— $Q_{regulated} = 11$ l/min

NOTE

The performance chart illustrates flow handling capacity in the pressure compensated mode for a few significant flow settings. p,Q curves are recorded from 1 to 2 port at TOil = 40°C and 46 cSt.

TECHNICAL DATA

MAXIMUM OPERATING PRESSURE	250 bar (2 to 1 max working pressure 210bar)
MAXIMUM FLOW	12 l/min
EXTERNAL COMPONENT TREATMENT	Oxide burnished
O-RING TEMPERATURE RANGE	-30° C to 110° C (standard sealing NBR - BUNA - N) -35° C to 140° C (HNBR - Upon customer request) -23° C to 225° C (FKM - Upon customer request)
OIL TEMPERATURE RANGE	-30° C to 110° C
FLUIDS	Mineral - based or synthetics with lubricating properties
VISCOSITIES	7,4 to 420 cSt
FILTRATION	20/18/15 ISO 4406 (maximum filtration admitted)
ORIENTATION	No restrictions
TECH. SPEC. FOR CHARACTERIZATION	see page 811
OIL TESTING CONDITIONS	ISO VG 46 cSt
SEAL KIT CODE	SK.060 (standard sealing NBR-BUNA-N)
WEIGHT	0,013 kg

ORDERING CODE

F	R	D	*	·	S	0	8	·	0	N	·	*	*	*	*
VALVE BASIC CODE					SIZE				FIXED FLOW SETTING			STEEL WIRE OPTION			
FLOW SETTING RANGE					S08 = Ø12,7 bore size				(l/min with 1 decimal)			W = If requested, leave blank if not.			
0 = 2-12 l/min															
1 = 0,5-1,8 l/min															

FRD0		FRD1	
2 l/min	020	0,6 l/min	006
3 l/min	030	0,8 l/min	008
4 l/min	040	1,0 l/min	010
5 l/min	050	1,2 l/min	012
6 l/min	060	1,4 l/min	014
7 l/min	070	1,6 l/min	016
8 l/min	080	1,8 l/min	018
9 l/min	90		
10 l/min	100		
11 l/min	110		
12 l/min	120		

NOTE

Customized fixed flow can be provided upon request.

Specifications may change without notice.