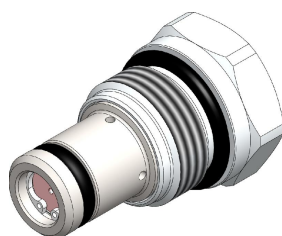
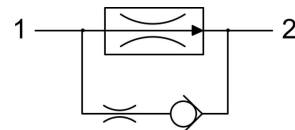


FRC*.S08 VALVE SERIES

SAE08 Cartridge - 250 bar
Direct acting - Pressure Compensated



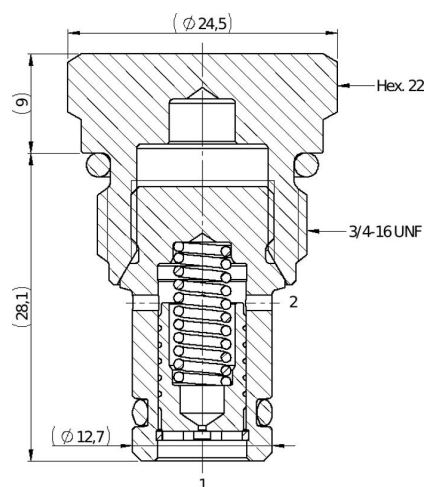
HYDRAULIC SYMBOL



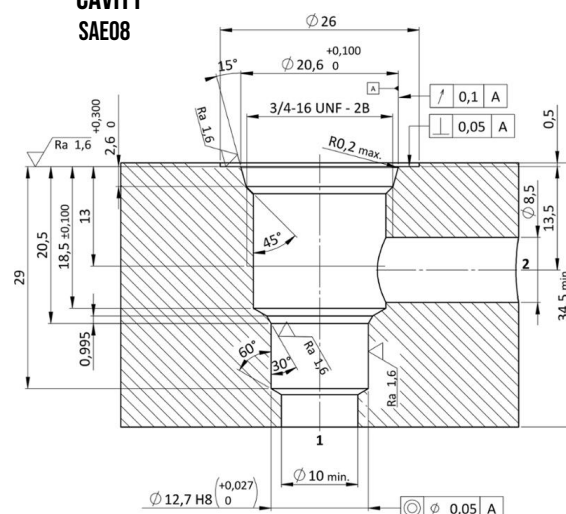
DESCRIPTION

A screw-in, cartridge style, direct acting, 2-way pressure compensated flow control valve. The flow rate of this valve in the 1 to 2 flow path is largely independent of the system pressure and is determined by the dimension of a calibrated orifice. The valve cannot be adjusted for variable flow output. Free flow in the 2 to 1 path is allowed and not pressure compensated.

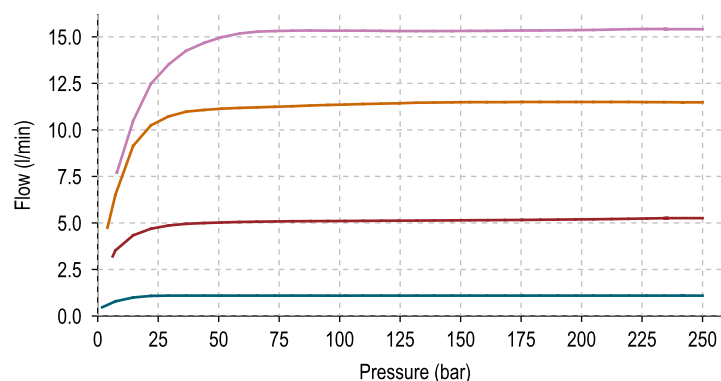
CROSS SECTION



CAVITY SAE08



PERFORMANCE DETAILS



NOTE

The performance chart illustrates flow handling capacity in the pressure compensated mode for a few significant flow settings. p.Q curves are recorded from 1 to 2 port at TOil = 40°C and 46 cSt.

LEGEND

- Q_{regulated} = 1 l/min
- Q_{regulated} = 5 l/min
- Q_{regulated} = 11 l/min
- Q_{regulated} = 15 l/min

TECHNICAL DATA

MAXIMUM OPERATING PRESSURE	250 bar (2 to 1 max working pressure 160 bar)
MAXIMUM FLOW	15 l/min
EXTERNAL COMPONENT TREATMENT	Zn/Fe - standard (96h) Zn/Ni (720h) (Upon customer request)
O-RING TEMPERATURE RANGE	-30° C to 110° C (standard sealing NBR - BUNA - N) -35° C to 140° C (HNBR - Upon customer request) -23° C to 225° C (FKM - Upon customer request)
OIL TEMPERATURE RANGE	-30° C to 110° C
FLUIDS	Mineral - based or synthetics with lubricating properties
VISCOSITIES	7,4 to 420 cSt
FILTRATION	20/18/15 ISO 4406 (maximum filtration admitted)
ORIENTATION	No restrictions
INSTALLATION TORQUE	40-45 Nm Hex.22
TECH. SPEC. FOR CHARACTERIZATION	see page 811
OIL TESTING CONDITIONS	ISO VG 46 cSt
SEAL KIT CODE	SK.030 (standard sealing NBR-BUNA-N)
WEIGHT	0,060 kg

ORDERING CODE

F R C *

VALVE BASIC CODE

FLOW SETTING RANGE

0 = 2-15 l/min

1 = 0,6-1,8 l/min

S 0 8

SIZE

S08 = 3/4-16 UNF with Ø12,7
nose size

0 N

FIXED FLOW SETTING
(l/min with 1 decimal)

* * * *

STEEL WIRE OPTION

W = if requested, leave
blank if not

FRC0		FRC1	
2 l/min	020	0,6 l/min	006
3 l/min	030	0,8 l/min	008
4 l/min	040	1,0 l/min	010
5 l/min	050	1,2 l/min	012
6 l/min	060	1,4 l/min	014
7 l/min	070	1,6 l/min	016
8 l/min	080	1,8 l/min	018
9 l/min	090		
10 l/min	100		
11 l/min	110		
12 l/min	120		
15 l/min	150		

NOTE

Customized fixed flow can be provided upon request.

Specifications may change without notice.