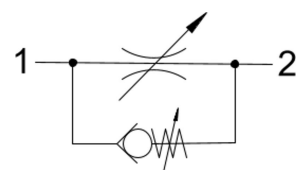


FCR0.S06 VALVE SERIES

SAE06 Cartridge - 350 bar
Direct acting - Poppet Type



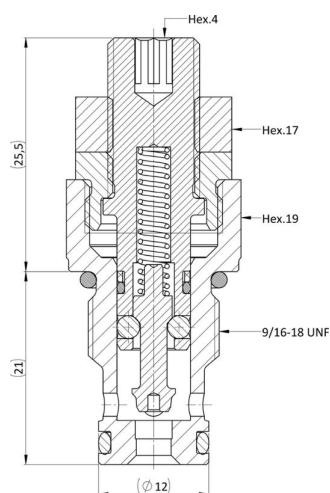
HYDRAULIC SYMBOL



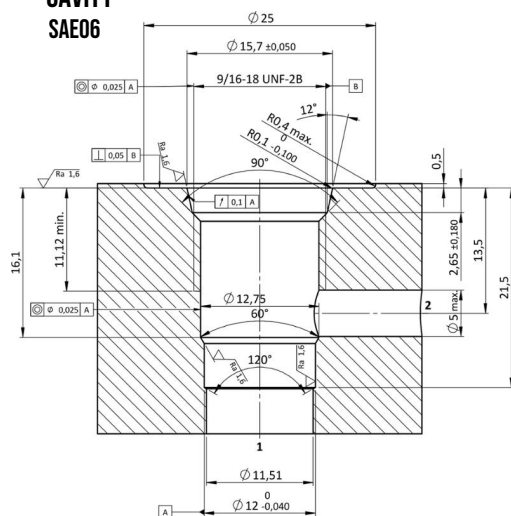
DESCRIPTION

A direct acting, screw-in, cartridge style, 1-way flow control valve with free reverse flow.
The valve acts as an adjustable flow regulator from port 2 to 1.
From port 1 to 2 the valve has a spring-biased check, closed until sufficient pressure is applied.
This allows the valve to have 2 settings : Adjustable flow regulator with reverse free flow (2vs1); Adjustable check valve (1vs2).

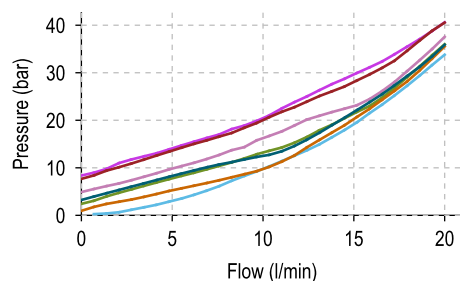
CROSS SECTION



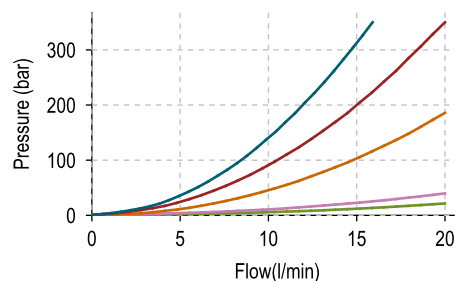
CAVITY
SAE06



PERFORMANCE DETAILS



— Spring B - 1vs2 — Spring S - 1vs2
— Spring G - 1vs2 — Spring V - 1vs2
— Spring N - 1vs2 — Spring Y - 1vs2
— Spring P - 1vs2



— 0,25 Turns - 2vs1 — 2 Turns - 2vs1
— 0,5 Turns - 2vs1
— 1 Turn - 2vs1
— 1,5 Turns - 2vs1

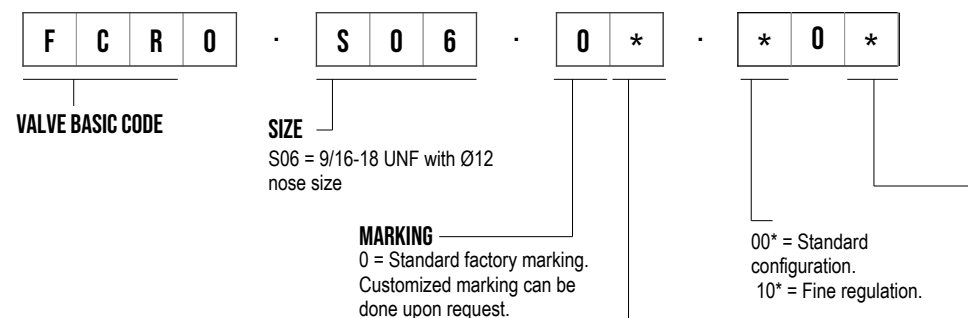
NOTE

The p/Q performance illustrated in the chart are the same in both directions.
p/Q curve is recorded at TOil = 40°C and 46 cSt.

TECHNICAL DATA

MAXIMUM OPERATING PRESSURE	350 bar
MAXIMUM FLOW	20 l/min
MAXIMUM INTERNAL LEAKAGE	0,75 cm ³ / min @ 10 bar - (2vs1 - valve fully closed) 0,75 cm ³ / min @ 350 bar - (2vs1 - valve fully closed)
EXTERNAL COMPONENT TREATMENT	Zn/Fe - standard (96h) Zn/Ni (720h) (Upon customer request)
O-RING TEMPERATURE RANGE	-30° C to 110° C (standard sealing NBR - BUNA - N) -35° C to 140° C (HNBR - Upon customer request) -23° C to 225° C (FKM - Upon customer request)
OIL TEMPERATURE RANGE	-30° C to 110° C
FLUIDS	Mineral - based or synthetics with lubricating properties
VISCOSITIES	7,4 to 420 cSt
FILTRATION	20/18/15 ISO 4406 (maximum filtration admitted)
ORIENTATION	No restrictions
INSTALLATION TORQUE	25-27 Nm Hex.19
TIGHTENING TORQUE NUT	15-20 Nm Hex.17
TECH. SPEC. FOR CHARACTERIZATION	see page 811
OIL TESTING CONDITIONS	ISO VG 46 cSt
SEAL KIT CODE	SK.207 (standard sealing NBR-BUNA-N)
WEIGHT	0,058 kg

ORDERING CODE



BIAS SPRING OPTIONS

Spring model code	Cracking pressure (bar)
Y	0,5
N	1
S	2,5
B	3
P	5
G	8
V	9

FLOW ADJUSTMENT

W = Top plastic knob + plastic counter knob
V = Top plastic knob
0 = Hex. allen head

Specifications may change without notice.