

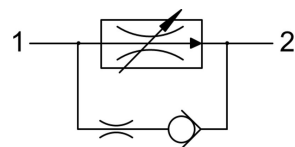
# FCA0.S10 VALVE SERIES

SAE Cartridge - 350 bar

Direct acting - Pressure Compensated



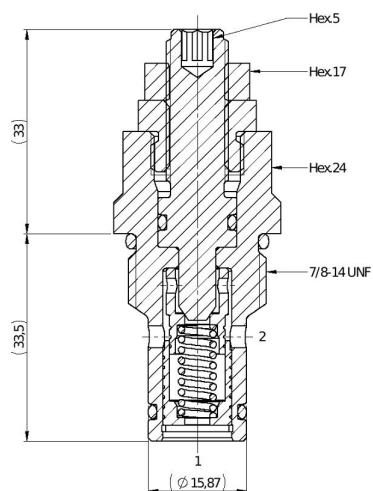
## HYDRAULIC SYMBOL



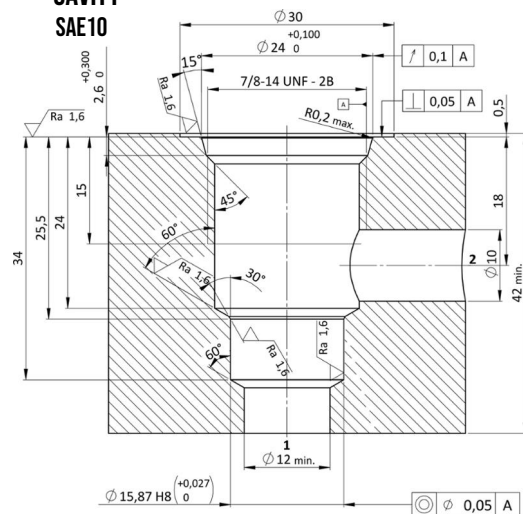
## DESCRIPTION

A direct acting, screw-in insert type, 2-way pressure compensated flow control valve. The flow rate of this valve in the 1 to 2 flow path is largely independent of the system pressure. The valve can be adjusted for variable flow output. Free flow in the 2 to 1 path is allowed and not pressure compensated.

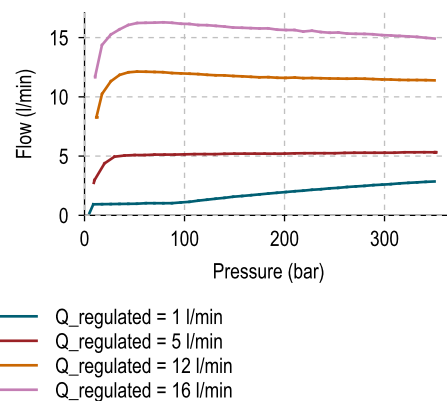
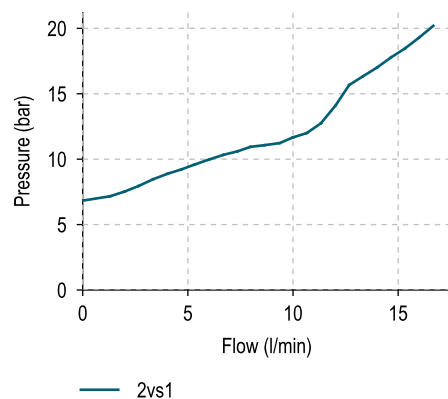
## CROSS SECTION



## CAVITY SAE10



## PERFORMANCE DETAILS



### NOTE

The performance chart illustrates flow handling capacity for significant spring bias options. p/Q curves are recorded at TOil = 40°C and 46 cSt.

## TECHNICAL DATA

MAXIMUM OPERATING PRESSURE	350 bar (2 to 1 max working pressure 160 bar)
MAXIMUM FLOW	16 l/min
EXTERNAL COMPONENT TREATMENT	Zn/Fe - standard (96h) Zn/Ni (720h) (Upon customer request)
O-RING TEMPERATURE RANGE	-30° C to 110° C (standard sealing NBR - BUNA - N) -35° C to 140° C (HNBR - Upon customer request) -23° C to 225° C (FKM - Upon customer request)
OIL TEMPERATURE RANGE	-30° C to 110° C
FLUIDS	Mineral - based or synthetics with lubricating properties
VISCOSITIES	7,4 to 420 cSt
FILTRATION	20/18/15 ISO 4406 (maximum filtration admitted)
ORIENTATION	No restrictions
INSTALLATION TORQUE	40-45 Nm  Hex.24
TIGHTENING TORQUE NUT	15-20 Nm  Hex.17
TECH. SPEC. FOR CHARACTERIZATION	see page 811
OIL TESTING CONDITIONS	ISO VG 46 cSt
SEAL KIT CODE	SK.001 (standard sealing NBR-BUNA-N)
WEIGHT	0,150 kg

## ORDERING CODE

F C A O

VALVE BASIC CODE

S 1 0

SIZE

S10 = 7/8-14 UNF with Ø15,87  
nose size

0 \*

MARKING

0 = Standard factory marking.  
Customized marking can be  
done upon request.

\* 0 0

000 = Standard  
configuration.  
100 = Fine regulation

## FLOW ADJUSTMENT

0 = Hex Allen Head

V = Top plastic knob

W = Top plastic knob + plastic counter knob