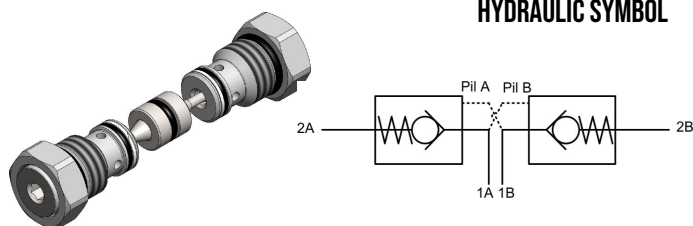


# DPCE.S10 VALVE SERIES

Hybrid SAE10 Cartridge - 450 bar

Direct acting check valve

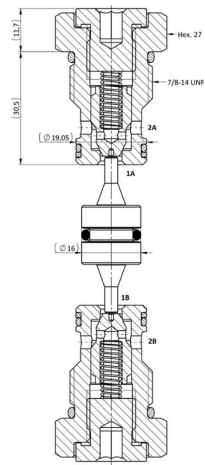
Pilot piston to open



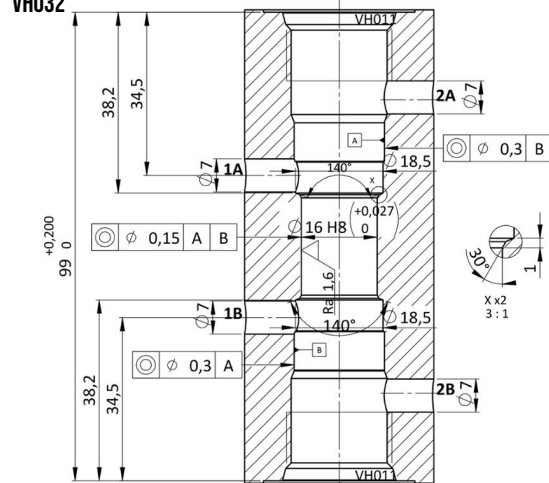
## DESCRIPTION

Normally closed, dual pilot check valve. Cartridge is closed until sufficient pressure is applied on port 1 to reach the bias spring setting, lift the poppet and allow free flow to port 2. The valve is normally closed from port 2 to 1. When sufficient pressure is applied on Pilot Port, the pilot piston lifts the poppet from its seat and allows flow from port 2 to port 1 (Pil A = 1B. Pil B = 1A). Very limited leakage in the check condition.

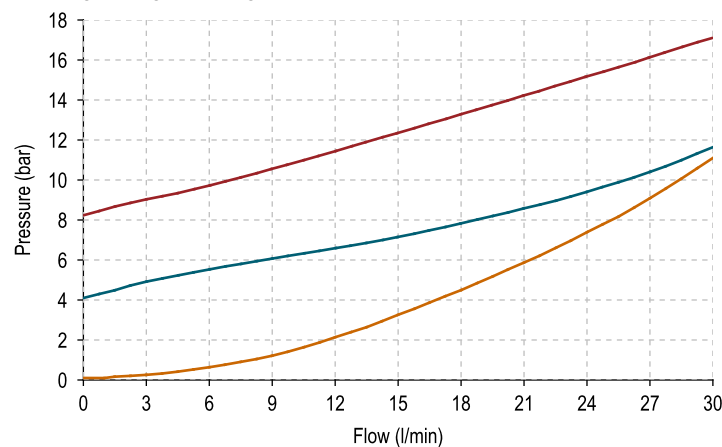
## CROSS SECTION



## CAVITY



## PERFORMANCE DETAILS



### NOTE

The performance chart illustrates flow handling capacity for significant spring options. p/Q curves are recorded at TOil = 40°C and 46 cSt.

### LEGEND

- Spring B
- Spring G
- 2vs1 Piloted

## TECHNICAL DATA

MAXIMUM OPERATING PRESSURE	450 bar
MAXIMUM FLOW	30 l/min
MAXIMUM INTERNAL LEAKAGE	0,10 cm <sup>3</sup> / min @ 10 bar 0,10 cm <sup>3</sup> / min @ 450 bar
PILOT RATIO	7:1
EXTERNAL COMPONENT TREATMENT	Zn/Ni (720h)
O-RING TEMPERATURE RANGE	-30° C to 110° C (standard sealing NBR - BUNA - N) -35° C to 140° C (HNBR - Upon customer request) -23° C to 225° C (FKM - Upon customer request)
OIL TEMPERATURE RANGE	-30° C to 110° C
FLUIDS	Mineral - based or synthetics with lubricating properties
VISCOSITIES	7,4 to 420 cSt
FILTRATION	20/18/15 ISO 4406 (maximum filtration admitted)
ORIENTATION	No restrictions
INSTALLATION TORQUE	80-85 Nm  Hex.27
TECH. SPEC. FOR CHARACTERIZATION	see page 811
OIL TESTING CONDITIONS	ISO VG 46 cSt
SEAL KIT CODE	SK.158 (standard sealing NBR-BUNA-N)
WEIGHT	0,250 kg

## ORDERING CODE

**D P C E**

VALVE BASIC CODE

**S 1 0**

MARKING

0 = Standard factory marking.  
Customized marking can be done upon request.

SIZE

7/8-14 UNF with Ø19,05 nose size

**0 \***

**0 0 0**

000 = Standard configuration.

## BIAS SPRING OPTIONS

Spring model code	Cracking pressure (bar)
B	4,5
G	8,5