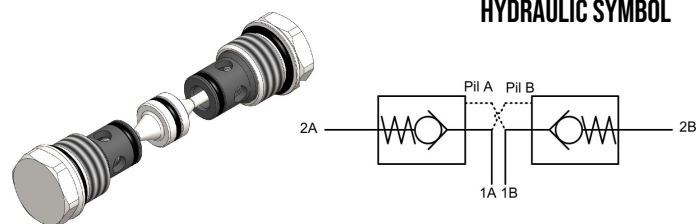


## DPCO.S10 VALVE SERIES

Hybrid SAE10 Cartridge - 420 bar

### Direct acting check valve

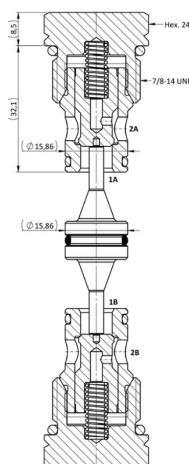
### Pilot piston to open



### DESCRIPTION

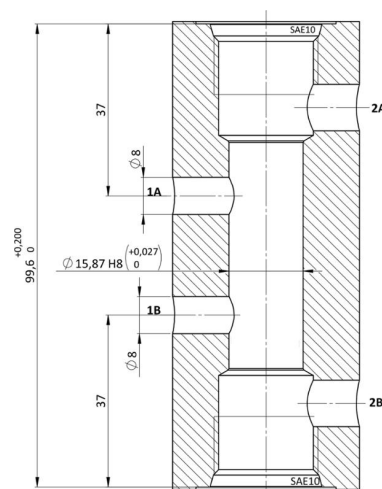
Normally closed, dual pilot check valve. Cartridge is closed until sufficient pressure is applied on port 1 to reach the bias spring setting, lift the poppet and allow free flow to port 2. The valve is normally closed from port 2 to 1. When sufficient pressure is applied on Pilot Port, the pilot piston lifts the poppet from its seat and allows flow from port 2 to port 1 (Pil A = 1B. Pil B = 1A). Very limited leakage in the check condition.

### CROSS SECTION

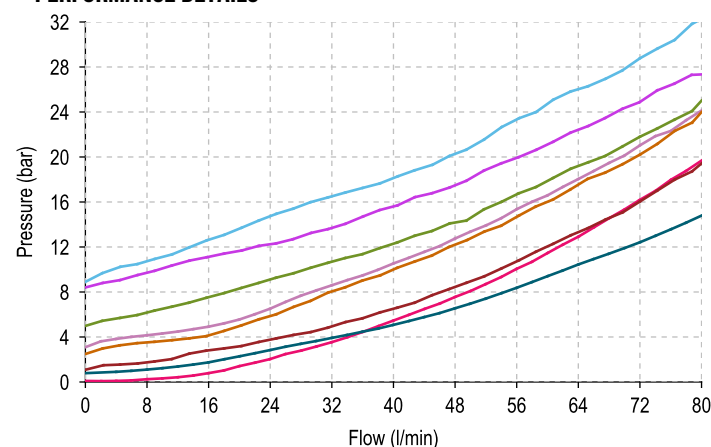


## CAVITY

### VH144



## PERFORMANCE DETAILS




## NOTE

**NOTE**  
The performance chart illustrates flow handling capacity for significant spring options.  
p/Q curves are recorded at TOil = 40°C and 46 cSt.

### LEGEND

- Spring Y      — Spring P  
— Spring N      — Spring G  
— Spring S      — Spring V  
— Spring B      — 2vs1 Piloted

## TECHNICAL DATA

<b>MAXIMUM OPERATING PRESSURE</b>	420 bar
<b>MAXIMUM FLOW</b>	80 l/min
<b>MAXIMUM INTERNAL LEAKAGE</b>	0,10 cm <sup>3</sup> / min @ 10 bar 0,10 cm <sup>3</sup> / min @ 420 bar
<b>PILOT RATIO</b>	3,9:1
<b>EXTERNAL COMPONENT TREATMENT</b>	Zn/Fe - standard (96h) Zn/Ni (720h) (Upon customer request)
<b>O-RING TEMPERATURE RANGE</b>	-30° C to 110° C (standard sealing NBR - BUNA - N) -35° C to 140° C (HNBR - Upon customer request) -23° C to 225° C (FKM - Upon customer request)
<b>OIL TEMPERATURE RANGE</b>	-30° C to 110° C
<b>FLUIDS</b>	Mineral - based or synthetics with lubricating properties
<b>VISCOSITIES</b>	7,4 to 420 cSt
<b>FILTRATION</b>	20/18/15 ISO 4406 (maximum filtration admitted)
<b>ORIENTATION</b>	No restrictions
<b>INSTALLATION TORQUE</b>	55-65 Nm  Hex.24
<b>TECH. SPEC. FOR CHARACTERIZATION</b>	see page 811
<b>OIL TESTING CONDITIONS</b>	ISO VG 46 cSt
<b>SEAL KIT CODE</b>	SK.080 (standard sealing NBR-BUNA-N)
<b>WEIGHT</b>	0.196 kg

**ORDERING CODE**

D	P	C	O
---	---	---	---

**VALVE BASIC CODE**

## OPTIONS

0 = Standard configuration

B = Without O-Ring on the pilot piston

S	1	0
---	---	---

### MARKING

0 = Standard factory marking.  
Customized marking can be done  
upon request.

—**SIZE**

7/8-14 UNF with Ø15,86 nose size

0	*
---	---

·

0	0	0
---	---	---

000 = Standard configuration.

## BIAS SPRING OPTIONS

Spring model code	Cracking pressure (bar)
Y	0,5
N	1,0
S	2,5
B	3,0
P	5,0
G	8,0
V	9,0

Specifications may change without notice.