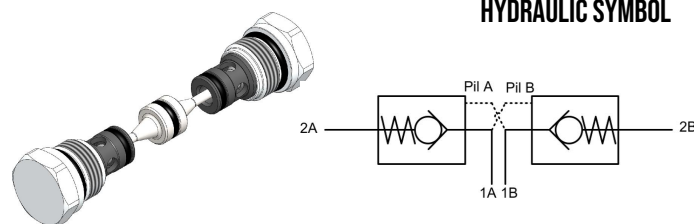


DPCO.S08 VALVE SERIES

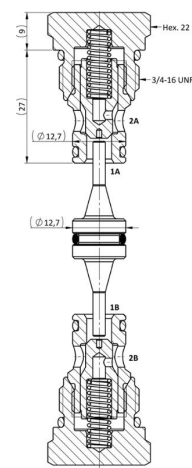
Hybrid SAE08 Cartridge - 420 bar
Direct acting check valve
Pilot piston to open



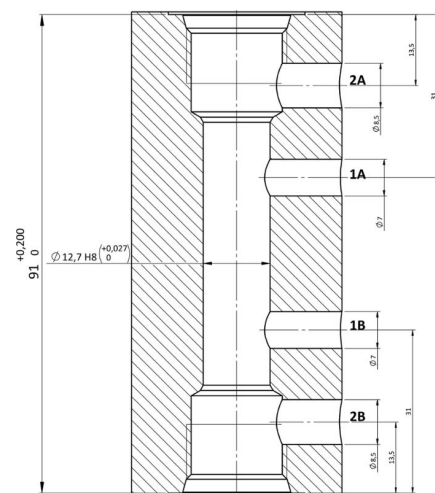
DESCRIPTION

Normally closed, dual pilot check valve. Cartridge is closed until sufficient pressure is applied on port 1 to reach the bias spring setting, lift the poppet and allow free flow to port 2. The valve is normally closed from port 2 to 1. When sufficient pressure is applied on Pilot Port, the pilot piston lifts the poppet from its seat and allows flow from port 2 to port 1 (Pil A = 1B. Pil B = 1A). Very limited leakage in the check condition.

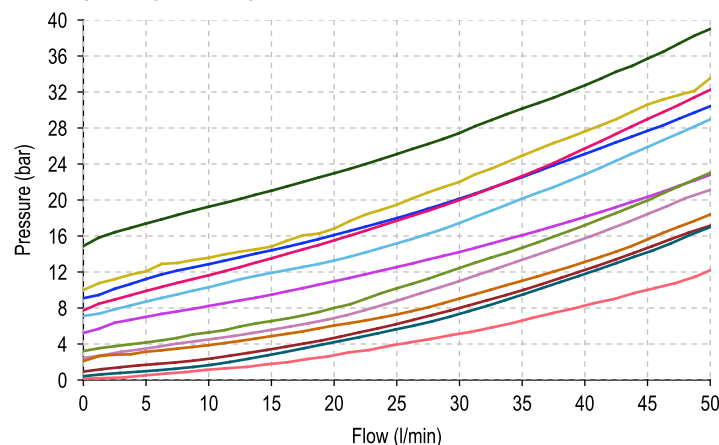
CROSS SECTION



CAVITY VH081



PERFORMANCE DETAILS



NOTE
The performance chart illustrates flow handling capacity for significant spring options.
p/Q curves are recorded at TOil = 40°C and 46 cSt.

LEGEND

- Spring Y
- Spring N
- Spring M
- Spring S
- Spring B
- Spring P
- Spring I
- Spring G
- Spring V
- Spring R
- Spring W
- 2vs1 Piloted

TECHNICAL DATA

| | |
|----------------------------------|---|
| MAXIMUM OPERATING PRESSURE | 420 bar |
| MAXIMUM FLOW | 50 l/min |
| MAXIMUM INTERNAL LEAKAGE | 0,10 cm ³ / min @ 10 bar 0,10 cm ³ / min @ 420 bar |
| PILOT RATIO | 4,5:1 |
| EXTERNAL COMPONENT TREATMENT | Zn/Fe - standard (96h) Zn/Ni (720h) (Upon customer request) |
| O-RING TEMPERATURE RANGE | -30° C to 110° C (standard sealing NBR - BUNA - N) -35° C to 140° C (HNBR - Upon customer request) -23° C to 225° C (FKM - Upon customer request) |
| OIL TEMPERATURE RANGE | -30° C to 110° C |
| FLUIDS | Mineral - based or synthetics with lubricating properties |
| VISCOSITIES | 7,4 to 420 cSt |
| FILTRATION | 20/18/15 ISO 4406 (maximum filtration admitted) |
| ORIENTATION | No restrictions |
| INSTALLATION TORQUE | 40-45 Nm Hex.22 |
| TECH. SPEC. FOR CHARACTERIZATION | see page 811 |
| OIL TESTING CONDITIONS | ISO VG 46 cSt |
| SEAL KIT CODE | SK.046 (standard sealing NBR-BUNA-N) |
| WEIGHT | 0,127 kg |

ORDERING CODE

D P C O

VALVE BASIC CODE

S 0 8

MARKING

0 = Standard factory marking.
Customized marking can be done upon request.

0 *

SIZE

3/4-16 UNF with Ø12,7 nose size

0 0 0

000 = Standard configuration.

OPTIONS

0 = Standard configuration
4 = Without O-Ring on the pilot piston

BIAS SPRING OPTIONS

| Spring model code | Cracking pressure (bar) | Spring model code | Cracking pressure (bar) |
|-------------------|-------------------------|-------------------|-------------------------|
| Y | 0,5 | G | 8,0 |
| N | 1,0 | V | 9,0 |
| M | 2,0 | R | 10,0 |
| S | 2,5 | W | 15,0 |
| B | 3,0 | | |
| P | 5,0 | | |
| I | 7,0 | | |

Specifications may change without notice.