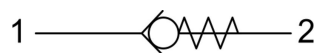


# CVC0.S08 VALVE SERIES

SAE08 Cartridge - 420 bar  
Direct acting - Poppet type



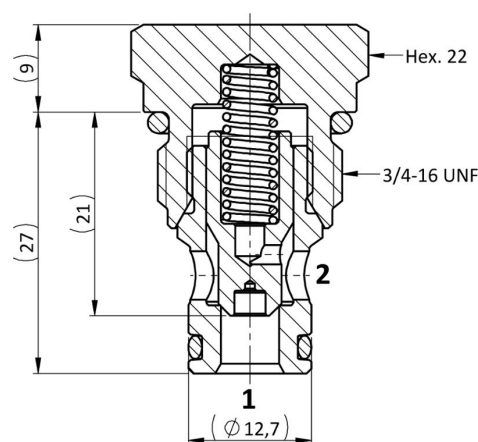
## HYDRAULIC SYMBOL



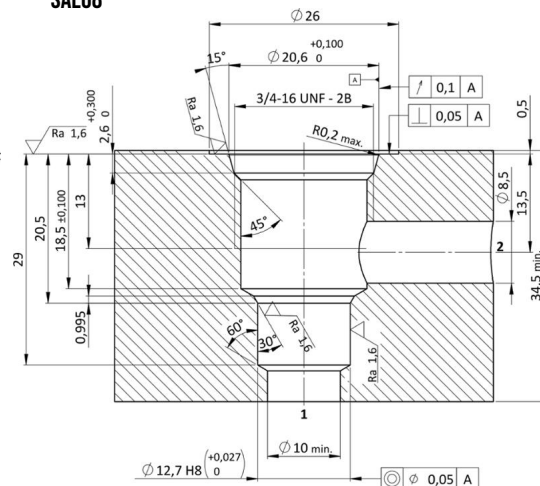
## DESCRIPTION

A screw-in, cartridge style, direct acting, poppet type check valve. Main use is as a blocking or load-holding device. The CVC0.S08 allows flow passage from port 1 to 2: the cartridge has a fully guided check which is spring-biased closed until sufficient pressure is applied at port 1 to open to 2. The flow is blocked in the opposite direction (2 to 1).

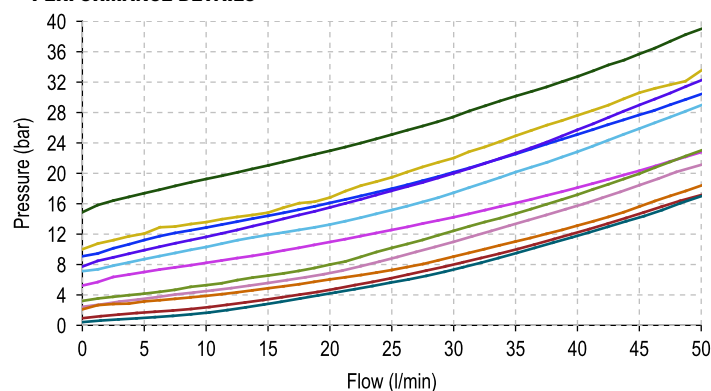
## CROSS SECTION



## CAVITY SAE08



## PERFORMANCE DETAILS



### NOTE

The performance chart illustrates flow handling capacity for significant spring bias options. p/Q curves are recorded at TOil = 40°C and 46 cSt.

### LEGEND

- Spring Y
- Spring N
- Spring M
- Spring S
- Spring B
- Spring P
- Spring I
- Spring G
- Spring V
- Spring R
- Spring W

## TECHNICAL DATA

MAXIMUM OPERATING PRESSURE	420 bar
MAXIMUM FLOW	50 l/min
CRACKING PRESSURE	see table below
MAXIMUM INTERNAL LEAKAGE	0,10 cm <sup>3</sup> / min @ 10 bar 0,10 cm <sup>3</sup> / min @ 420 bar
EXTERNAL COMPONENT TREATMENT	Zn/Fe - standard (96h) Zn/Ni (720h) (Upon customer request)
O-RING TEMPERATURE RANGE	-30° C to 110° C (standard sealing NBR - BUNA - N) -35° C to 140° C (HNBR - Upon customer request) -23° C to 225° C (FKM - Upon customer request)
OIL TEMPERATURE RANGE	-30° C to 110° C
FLUIDS	Mineral - based or synthetics with lubricating properties
VISCOSITIES	7,4 to 420 cSt
FILTRATION	20/18/15 ISO 4406 (maximum filtration admitted)
ORIENTATION	No restrictions
INSTALLATION TORQUE	40-45 Nm Hex.22
TECH. SPEC. FOR CHARACTERIZATION	see page 811
OIL TESTING CONDITIONS	ISO VG 46 cSt
SEAL KIT CODE	SK.030 (standard sealing NBR-BUNA-N)
WEIGHT	0,060 kg

## ORDERING CODE

C V C 0

VALVE BASIC CODE

S 0 8

MARKING

0 = Standard factory marking.  
Customized marking can be done upon request.

0 \*

0 0 0

000 = Standard configuration.

SIZE

3/4-16 UNF with Ø12,7 nose size

## BIAS SPRING OPTIONS

Spring model code	Cracking pressure (bar)	Spring model code	Cracking pressure (bar)
Y	0,5	V	9,0
N	1,0	R	10,0
M	2,0	W	15,0
S	2,5		
B	3,0		
P	5,0		
I	7,0		
G	8,0		

Specifications may change without notice.