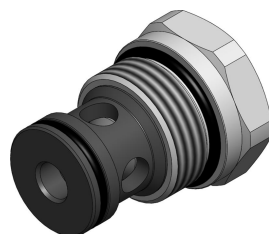
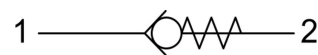


CVC0.M33 VALVE SERIES

METRIC Cartridge - 420 bar
Direct acting - Poppet type



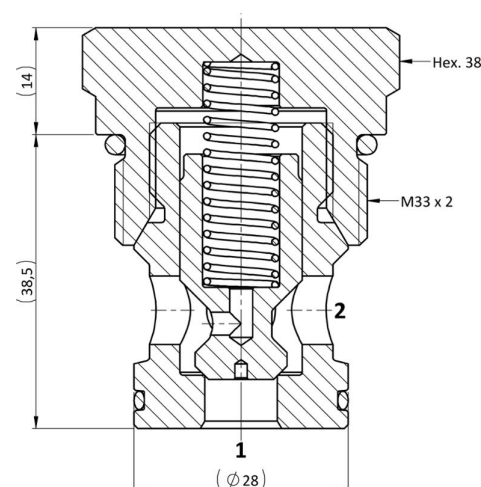
HYDRAULIC SYMBOL



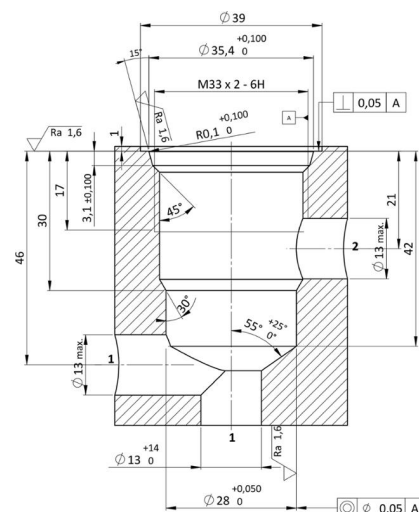
DESCRIPTION

A screw-in, cartridge style, direct acting, poppet type check valve. Main use is as a blocking or load-holding device. The CVC0.M33 allows flow passage from port 1 to 2: the cartridge has a fully guided check which is spring-biased closed until sufficient pressure is applied at port 1 to open to 2. The flow is blocked in the opposite direction (2 to 1).

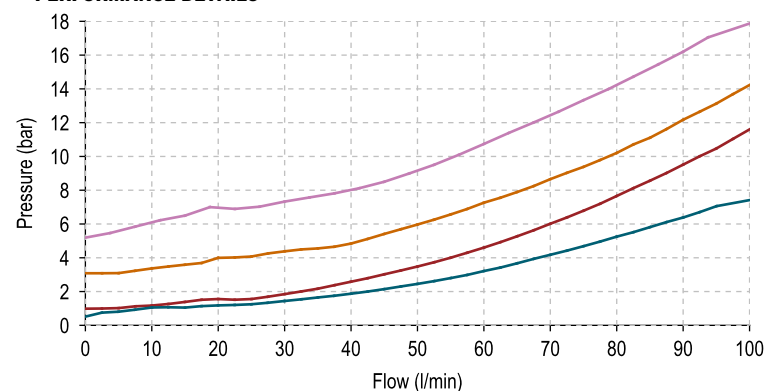
CROSS SECTION



CAVITY VH121



PERFORMANCE DETAILS



NOTE
The performance chart illustrates flow handling capacity for significant spring bias options.
p/Q curves are recorded at TOil = 40°C and 46 cSt.

LEGEND

- Spring Y
- Spring N
- Spring B
- Spring P

TECHNICAL DATA

| | |
|----------------------------------|---|
| MAXIMUM OPERATING PRESSURE | 420 bar |
| MAXIMUM FLOW | 100 l/min |
| CRACKING PRESSURE | see table below |
| MAXIMUM INTERNAL LEAKAGE | 0,10 cm ³ / min @ 10 bar 0,10 cm ³ / min @ 420 bar |
| EXTERNAL COMPONENT TREATMENT | Zn/Fe - standard (96h) Zn/Ni (720h) (Upon customer request) |
| O-RING TEMPERATURE RANGE | -30° C to 110° C (standard sealing NBR - BUNA - N) -35° C to 140° C (HNBR - Upon customer request) -23° C to 225° C (FKM - Upon customer request) |
| OIL TEMPERATURE RANGE | -30° C to 110° C |
| FLUIDS | Mineral - based or synthetics with lubricating properties |
| VISCOSITIES | 7,4 to 420 cSt |
| FILTRATION | 20/18/15 ISO 4406 (maximum filtration admitted) |
| ORIENTATION | No restrictions |
| INSTALLATION TORQUE | 150-160 Nm Hex.38 |
| TECH. SPEC. FOR CHARACTERIZATION | see page 811 |
| OIL TESTING CONDITIONS | ISO VG 46 cSt |
| SEAL KIT CODE | SK.074 (standard sealing NBR-BUNA-N) |
| WEIGHT | 0,274 kg |

ORDERING CODE

| | | | | | | | | | | | | | | |
|------------------|---|---|---|---|---------------------------------|---|---|---|---|-------------------------------|---|---|---|---|
| C | V | C | 0 | . | M | 3 | 3 | . | 0 | * | . | 0 | 0 | 0 |
| VALVE BASIC CODE | | | | | | | | MARKING | | 000 = Standard configuration. | | | | |
| | | | | | SIZE | | | 0 = Standard factory marking. Customized marking can be done upon request. | | | | | | |
| | | | | | METRIC M33x2 with Ø28 nose size | | | | | | | | | |

BIAS SPRING OPTIONS

| Spring model code | Cracking pressure (bar) |
|-------------------|-------------------------|
| Y | 0,5 |
| N | 1,0 |
| B | 3,0 |
| P | 5,0 |