

SVP4.S08 Valve Series

Hybrid SAE Cartridge - 230 bar

Directional Valve - 3/2 Spool type

Description

A Solenoid operated, 3 way 2 positions, spool type, direct acting, screw-in hydraulic directional cartridge valve.

In the de-energized mode, the SVP4.S08 allows flow bidirectionally between ports 2 and 3, while blocking flow at 1.

In the energized mode, bidirectional flow is allowed between ports 1 and 2, while flow is blocked at 3.

Even if port 1 may be fully pressurized, it is not intended to be used as the inlet .

Low pressure drop thanks to optimized flow path.

Technical Features

All external surfaces are zinc plated and corrosion-proof.

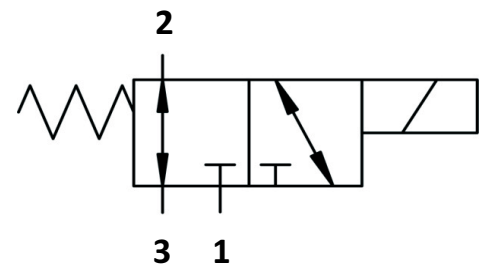
All valve parts are made of high strength steel. Spool and cage are hardened and super-finished to ensure minimal wear and extended service life.

Coil seals protect the solenoid system.

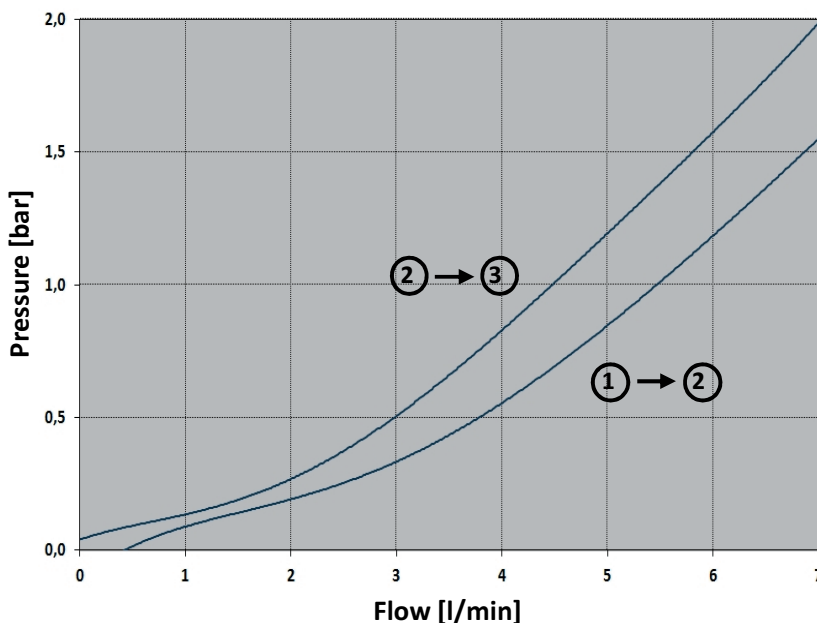
Industry commonly used hybrid cavity.



Symbols



Performance Details



Technical Data

Maximum operating pressure: 230 bar

Maximum flow: 7 l/min

Internal leakage: max 75 cc/min @ 230 bar

Temperature: -30°C to 110°C

Fluids: Mineral-based or synthetics with lubricating properties at viscosities of 7.4 to 420 cSt

Minimum pull-in voltage: 85% of nominal

Orientation: no restrictions

Installation torque: 25-30 Nm

Seal kit code: SK.061 and SK.027 (for coil)

Weight: 0.130 kg

NOTE: The performance chart illustrates flow handling capacity 2 to 3 (de-energized) and 1 to 2 (energized).

P/Q curves are recorded at $T_{oil} = 40^{\circ}C$ and 46 cSt

