

## SVM0.S08 Valve Series

SAE Cartridge - 300 bar

NO Single Lock Pilot Operated - Poppet Type

### Description

Solenoid operated, 2-way 2-positions, normally open, piloted poppet type, screw-in cartridge valve.

Typically used as a blocking or load holding device for high pressure circuits. When the coil is de-energized, the SVM0.S08 allows flow from 2 to 1, and from 1 to 2.

When the coil is energized the valve closes, blocking flow from 2 to 1. In this mode, flow from 1 to 2 is allowed once the pressure overcomes the force of the solenoid.

The rigid design using a 1-piece body contributes to minimize the effect of eccentricities in cavity and provides great reliability.

Low pressure drop thanks to optimized flow path.

### Technical Features

All external surfaces are zinc plated and corrosion-proof.

All valve parts are made of high strength steel. Poppet is hardened and ground to ensure minimal wear and extended service life.

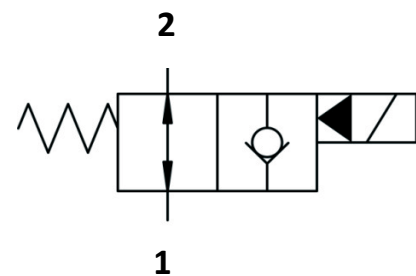
Coil seals protect the solenoid system.

Manual override option.

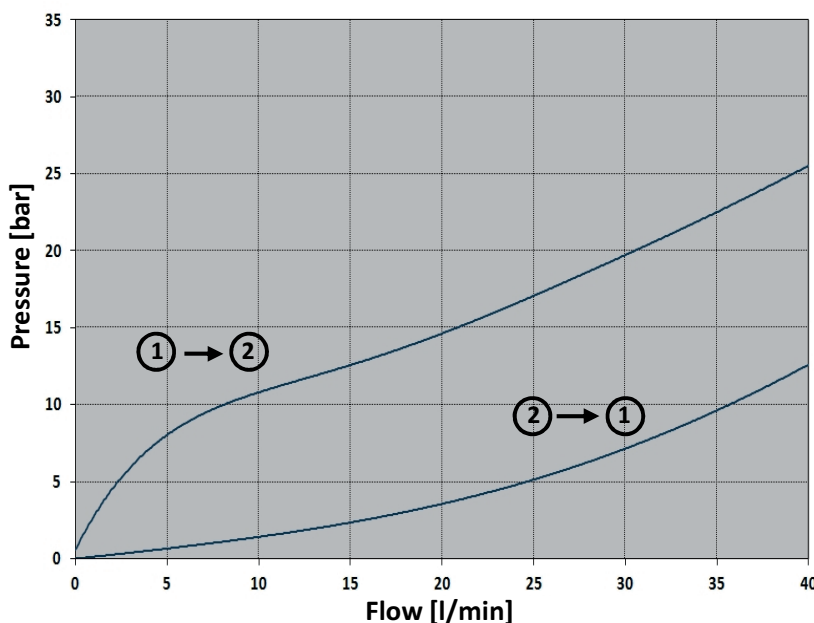
Industry common cavity.



## Symbols



## Performance Details



### Technical Data

Maximum operating pressure: 300 bar

Maximum flow: 40 l/min

Internal leakage: max 5 drops/min @ 300 bar

Response time: Energized 20 msec,

De-energized 30 msec (typical 24V DC coil)

Temperature: -30°C to 110°C

Fluids: Mineral-based or synthetics with lubricating properties at viscosities of 7.4 to 420 cSt

Minimum pull-in voltage: 85% of nominal

Orientation: no restrictions

Installation torque: 40-45 Nm

Seal kit code: SK.030 and SK.027 (coil)

Weight: 0.120 kg

NOTE: The performance chart illustrates flow handling capacity in both directions (1 to 2 energized, 2 to 1 de-energized).

P/Q curves are recorded at  $T_{oil} = 40^{\circ}C$  and 46 cSt

