

## SVD5.S08 Valve Series

**SAE Cartridge - 250 bar**

**NC Double Lock Direct acting - Poppet Type**

### Description

Solenoid operated, 2-way 2-positions, normally closed, direct acting poppet type, bi-directional blocking, screw-in cartridge valve.

Special design for low leakage in load holding applications.

When the coil is de-energized, the SVD5.S08 blocks flow in both directions. Once the coil is energized, the valve's poppet opens and allows free flow from 1 to 2 and from 2 to 1.

The rigid design using a 1-piece body contributes to minimize the effect of eccentricities in cavity and provides great reliability.

Low pressure drop thanks to optimized flow path.

Override option: to manually override, push and hold the override pin/botton.

### Technical Features

All external surfaces are zinc plated and corrosion-proof.

All valve parts are made of high strength steel. Poppet is hardened and ground to ensure minimal wear and extended service life.

Coil seals protect the solenoid system.

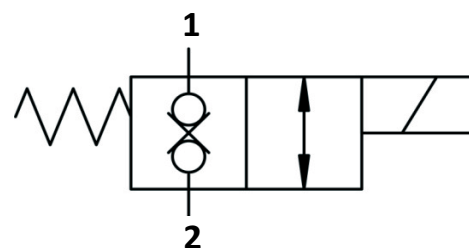
Manual override option.

Industry common cavity.

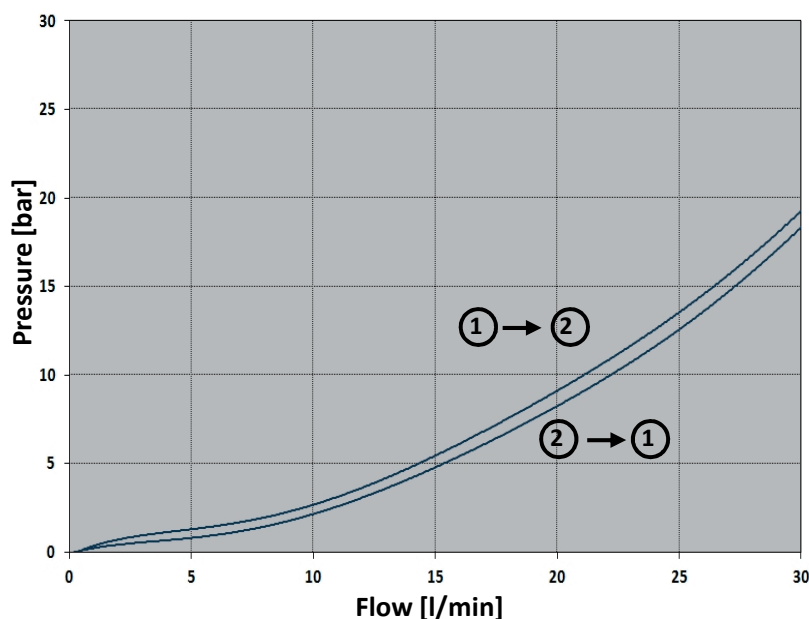


vis hydraulics

## Symbols



## Performance Details



### Technical Data

Maximum operating pressure: 250 bar

Maximum flow: 30 l/min

Internal leakage: max 5 drops/min @ 250 bar

Response time: Energized 20 msec,

De-energized 40 msec (typical 24V DC coil)

Temperature: -30°C to 110°C

Fluids: Mineral-based or synthetics with lubricating properties at viscosities of 7.4 to 420 cSt

Minimum pull-in voltage: 85% of nominal

Orientation: no restrictions

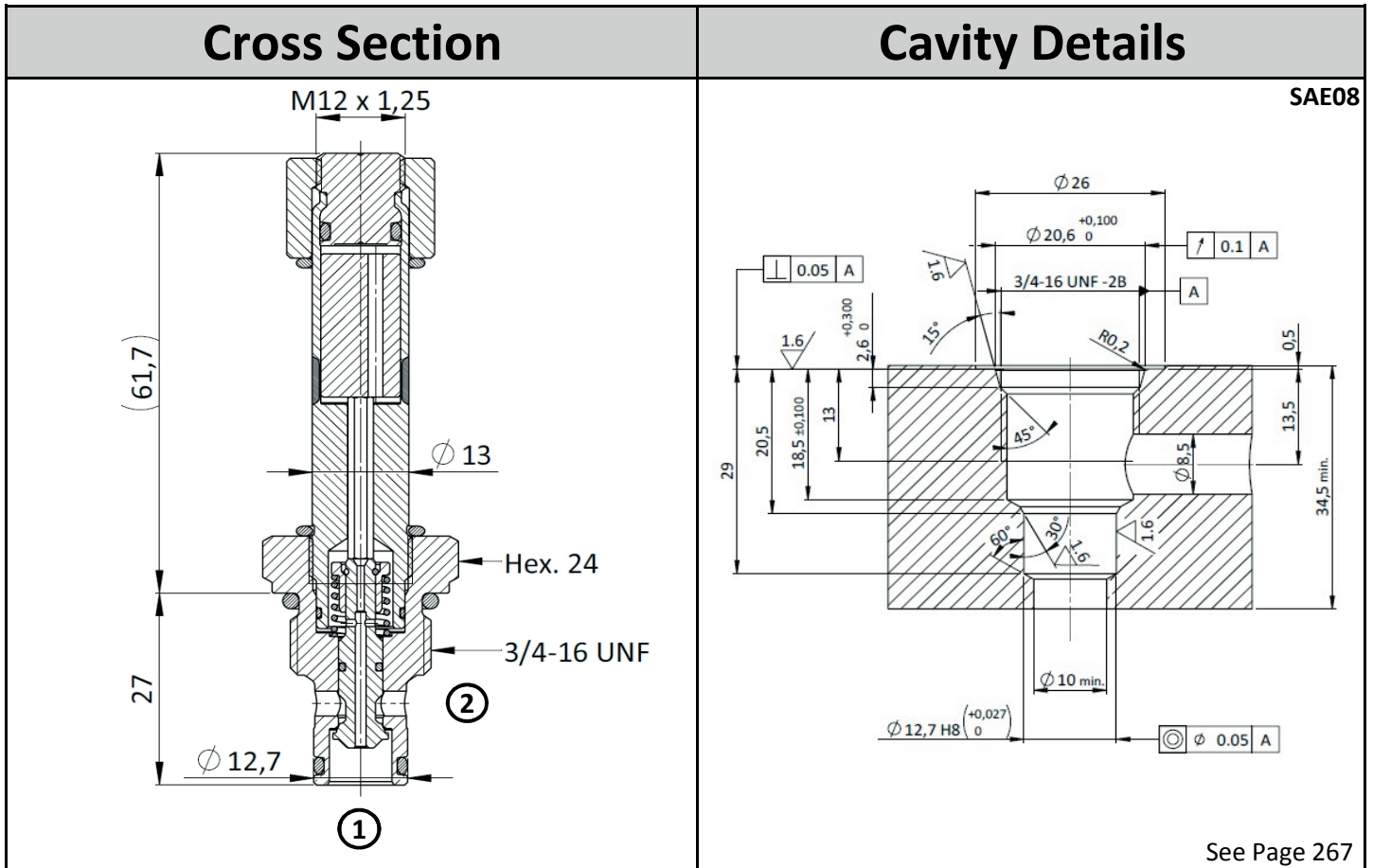
Installation torque: 40-45 Nm

Seal kit code: SK.003 and SK.027 (coil)

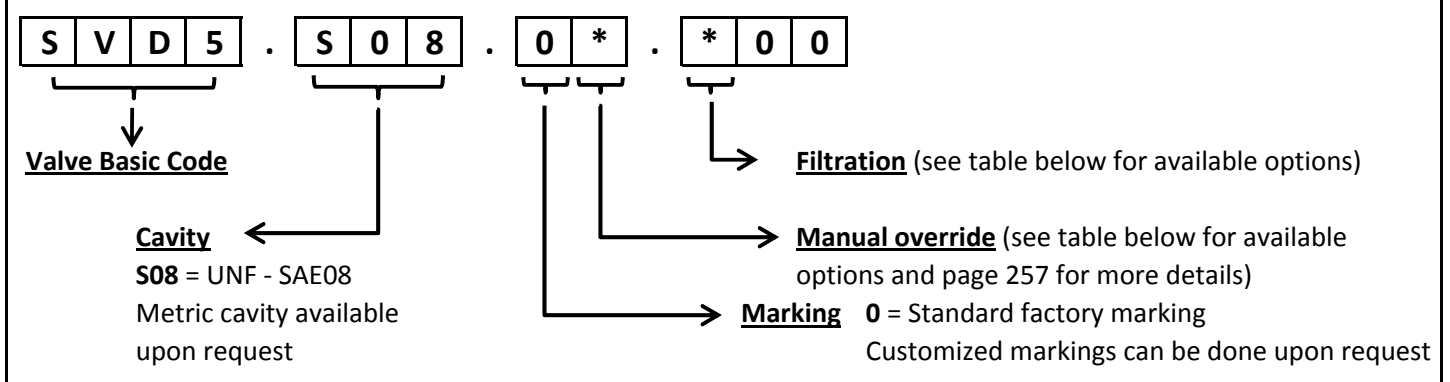
Weight: 0.120 kg

NOTE: The performance chart illustrates flow handling capacity in both directions (1 to 2 and 2 to 1).

P/Q curves are recorded at  $T_{oil} = 40^{\circ}C$  and 46 cSt



## Ordering Code



Manual Override		Filtration		Coil
Model Code	Type of override	Model Code	Type of Filter	
0	No override	N	No filter	
3	Push pin	F	Standard filter (mesh size 280µm)	
4	Push knob	Customized filters can be done upon request		
5	Screw			
				Use <b>22W</b> coil to operate this valve. For more details see page 263.

Specifications may change without notice.