

## SVC0.S08 Valve Series

**SAE Cartridge - 250 bar**

**Directional Valve - 3/2 Seated type**

### Description

A Solenoid operated, 3 way 2 positions, seated type, direct acting, screw-in hydraulic directional cartridge valve.

In the de-energized mode, the SVC0.S08 allows flow bidirectionally between ports 2 and 3, while blocking flow at 1. In this stage the leakage on port 1 is very limited.

In the energized mode, bidirectional flow is allowed between ports 1 and 2, while flow is blocked at 3 with a low leakage.

The rigid design using a 1-piece body contributes to minimize the effect of eccentricities in cavity and provides great reliability.

Low pressure drop thanks to optimized flow path.

### Technical Features

All external surfaces are zinc plated and corrosion-proof.

All valve parts are made of high strength steel. Spool and cage are hardened and super-finished to ensure minimal wear and extended service life.

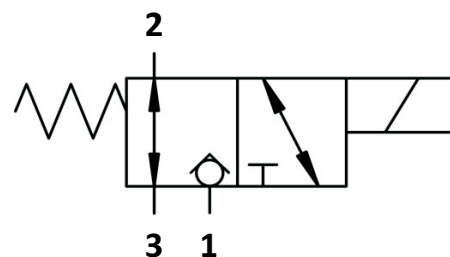
Coil seals protect the solenoid system.

Manual override option.

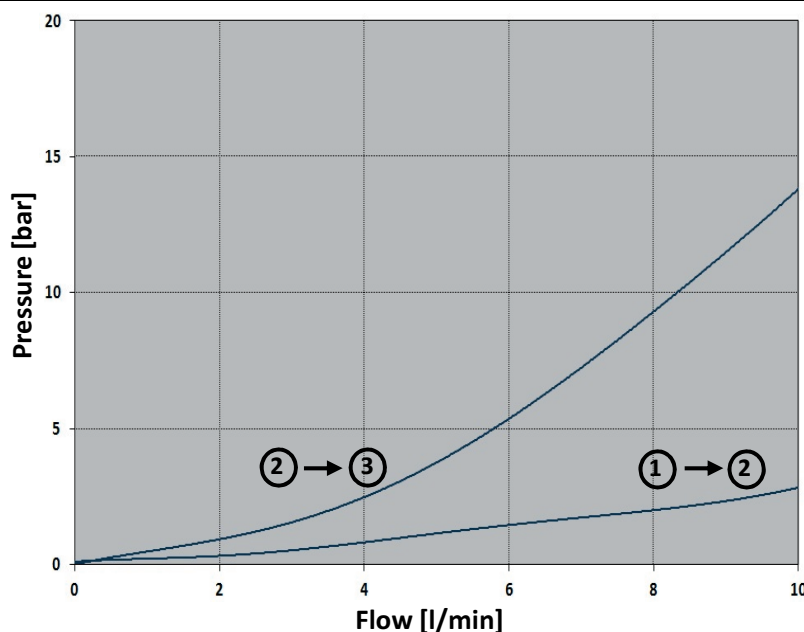
Industry SAE common cavity.



## Symbols



## Performance Details



### Technical Data

Maximum operating pressure: 250 bar

Maximum flow: 10 l/min

Leakage on port 1: max 0,25 cc/min @ 250 bar

Leakage: max 85 cc/min @ 250 bar

Response time: Energized 30 msec,

De-energized 50 msec (typical 24V DC coil)

Temperature: -30°C to 110°C

Fluids: Mineral-based or synthetics with lubricating properties at viscosities of 7.4 to 420 cSt

Minimum pull-in voltage: 85% of nominal

Orientation: no restrictions

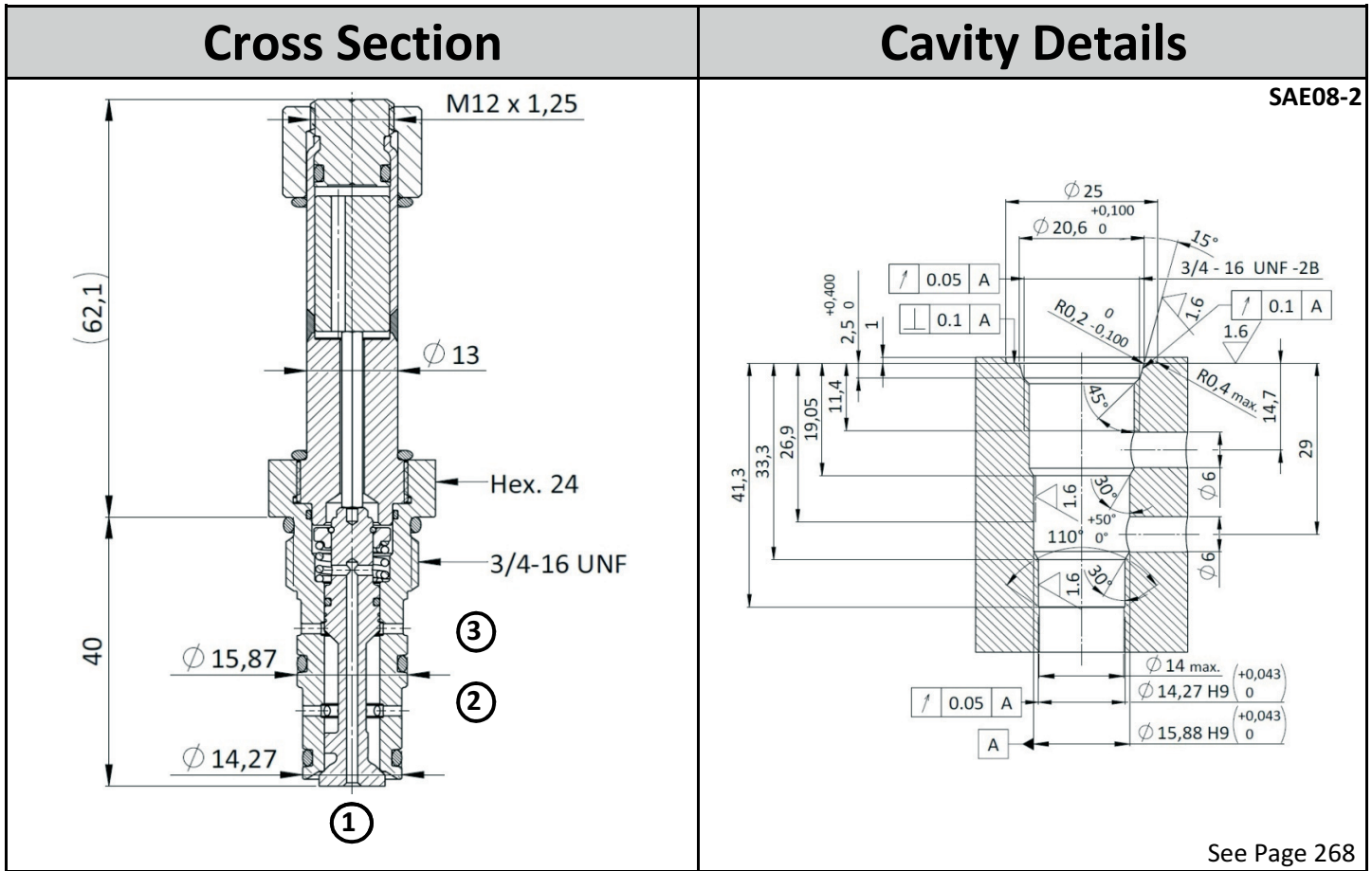
Installation torque: 40-45 Nm

Seal kit code: SK.035 and SK.027 (coil)

Weight: 0.140 kg

NOTE: The performance chart illustrates flow handling capacity 2 to 3 (de-en) and 1 to 2 (en).

P/Q curves are recorded at  $T_{oil} = 40^{\circ}C$  and 46 cSt



### Ordering Code

S	V	C	0	.	S	0	8	.	0	*	.	1	0	0
↓ <b>Valve Basic Code</b>				↓ <b>Cavity</b> S08 = UNF - SAE08-2				↓ <b>Flow path</b> 2 and 3 connected, 1 blocked (de-energized) 1 and 2 connected, 3 blocked (energized)		↓ <b>Manual override</b> (see table below for available options and page 257 for more details)		↓ <b>Marking</b> 0 = Standard factory marking Customized markings can be done upon request		

Manual Override		Coil
Model Code	Type of override	<p style="text-align: center;">Use <b>22W</b> coil to operate this valve. For more details see page 263.</p>
0	No override	
3	Push pin	
4	Push knob	
5	Screw	

Specifications may change without notice.