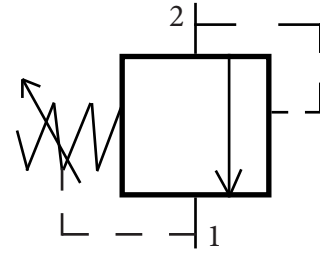
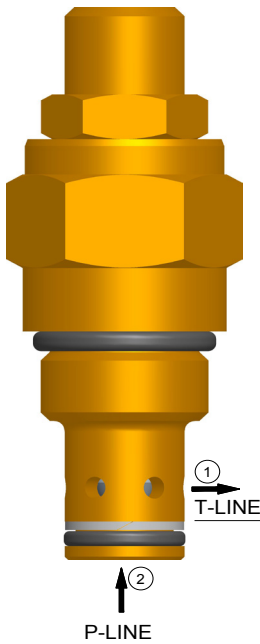


Pressure Relief valve
Direct Acting ,Poppet Type



- $Q_{(max)}=40 \text{ lpm}$, $P_{(max)}=350 \text{ bar}$
- Screw -in Cartridge,
- Direct Acting , Poppet Design



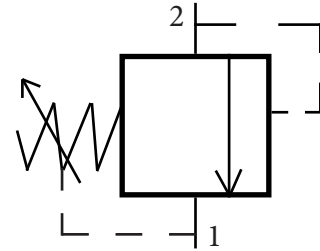
- **Poppet Type design** provides reliable, long life & greater stability
- **Overset Protection** -Spring cannot go solid.
- **Quick & Smooth Reponse** to load change in hydraulic system with **low internal leakage**
- Available in **Leakproof screw adjustment / Fixed setting cap.**
- Can be fitted in **line mounting bodies.**
- All external parts are **zinc plated ,chromated (CrVI-Free).**
- Designed in accordance to **Industry common Cavities.**

1. Description -

SRPD series cartridge valves are **Screw-in, Direct Acting, Poppet type, Normally Closed** high performance Pressure relief valves. This cartridge offers excellent response to load change in hydraulic system requiring low internal leakage. Pressure (From Pump) should be connected to #2- port.

while #1- port is connected to T-line. This relief valve can be used in manifold blocks & line mounting bodies. All external parts of this cartridge are Zinc-plated and chromated (CrVI-free) poppet is hardened and thus suitable to be used in harshest environmental conditions.

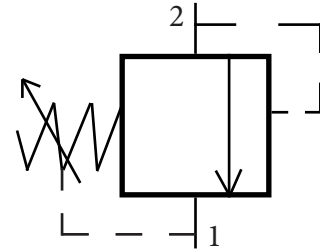
Pressure Relief valve
Direct Acting ,Poppet Type



2. Technical Data :

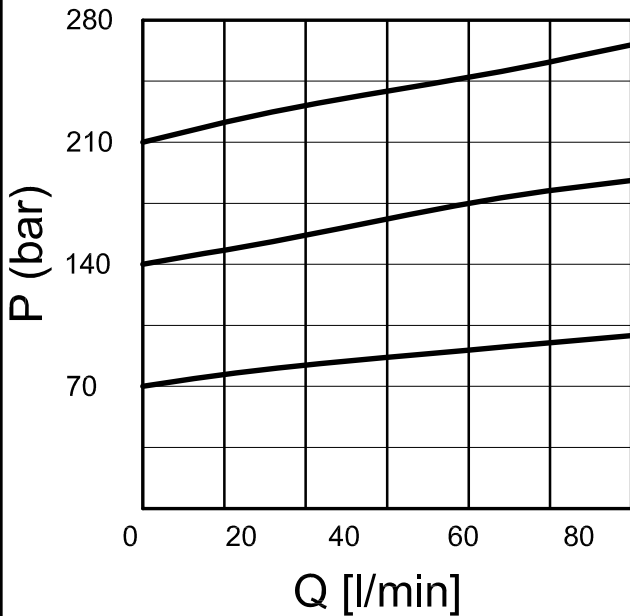
S.no.	General Specification	Values
1.	DESIGNATION	DIRECT ACTING RELIEF VALVE
2.	MOUNTING METHOD	SI0-2 CAVITY
3.	MAXIMUM OPERATING PRESSURE	350 BAR
4.	MAXIMUM FLOW	40 LPM
5.	MAXIMUM INTERNAL LEAKAGE	0.25 CC/MIN
6.	RESEAT PRESSURE	95% OF CRACK PRESSURE
7.	VALVE HOUSING	$P_{\text{Hydraulic system}} \leq 210 \text{ BAR}$ -ALUMINUM HOUSING-ANODISED $P_{\text{Hydraulic system}} > 210 \text{ BAR}$ -STEEL HOUSING -ZINC PLATED
8.	OPERATING TEMPERATURE	-30° TO +110° C
9.	HYDRAULIC FLUID	MINERAL OILS WITH LUBRICATING PROPERTIES AT 15.....250 MM ² /SEC
10.	MINIMUM FLUID CLEANINESS	ISO CLASS 20/18/15
11.	WEIGHT	0.18 KG
12.	INSTALLATION TORQUE	70-80 N/M

Pressure Relief valve
Direct Acting ,Poppet Type

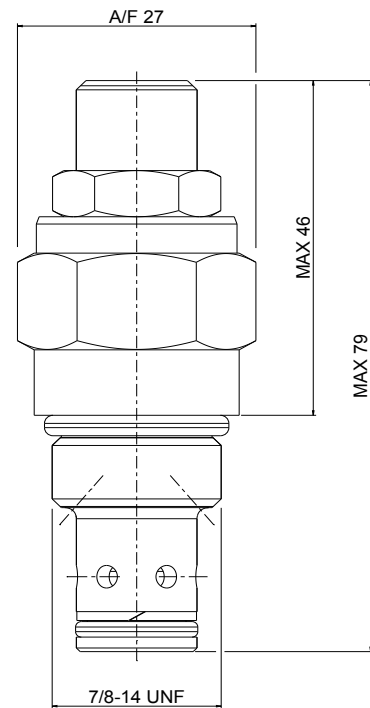


3. P-Q Characteristics :

Note: The Performance Chart shows Flow handling capacity at specific pressure setting P/Q Curve is recorded at Temp_{oil} = 40° C at 46 cst.



4. Dimensioning :



5. Ordering Code :

SRPD - 10 - X - X - X - XXX

VALVE BASIC CODE

CAVITY TYPE = 7/8" -14 UNF
METRIC CAVITY AVAILABLE ON
REQUEST

ADJUSTMENT :

F = FIXED SETTING
A = ADJUSTMENT SCREW
K = KNOB

HOUSING & PORTS

C : Cartridge only
XA3 : 3/8" BSP
XA4 : 1/2" BSP
XB8 : SAE #8
XB10 : SAE #10

A : Aluminium Housing
S : Steel Housing

PRESSURE SETTING (bar)
000 = for no specific setting

SPRING RANGE :

A = 10-100 bar
B = 20-200 bar
C = 30-300 bar