

SQV0.G38 Valve Series

GAS Cartridge - 420 bar

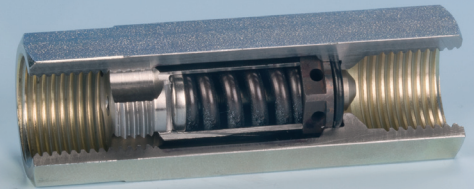
Direct acting - Poppet Type

Description

Direct acting in-line sequence valve with steel housing.
 The SQV provides in one easy-to-install very compact in line valve the typical function of shock relief valve.
 When the pressure at the high pressure inlet (1) reaches the valve setting, the valve starts to open to tank (2).
 The flow in the opposite direction is blocked.
 Thanks to the smart deflector design, the pressure rise is very low.
 High precision machining guarantees quick response to load changes, limited hysteresis and reduced leakage.

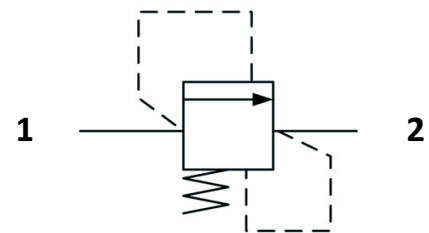
Technical Features

All external surfaces are zinc plated and corrosion-proof.
 All valve parts are made of high strength steel.
 Highly stressed parts are hardened and ground to guarantee minimal wear and to extend service life.
 Pressure setting is pre-adjusted by the factory and cannot be changed
 Optional spring ranges to 420 bar (6000 psi)
 Back pressure on the tank port (port 2) is directly additive to the valve setting at a 1:1 ratio.
 GAS ports

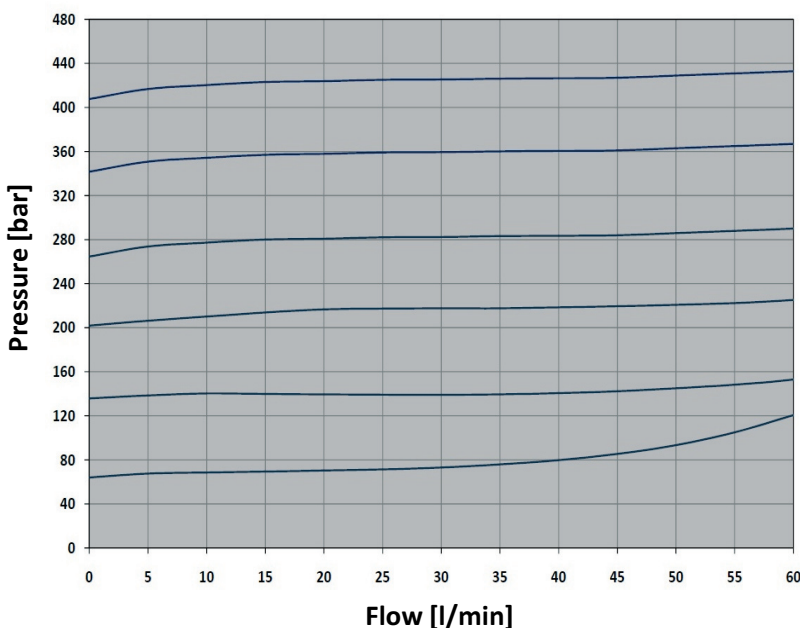


vis hydraulics

Symbols



Performance Details



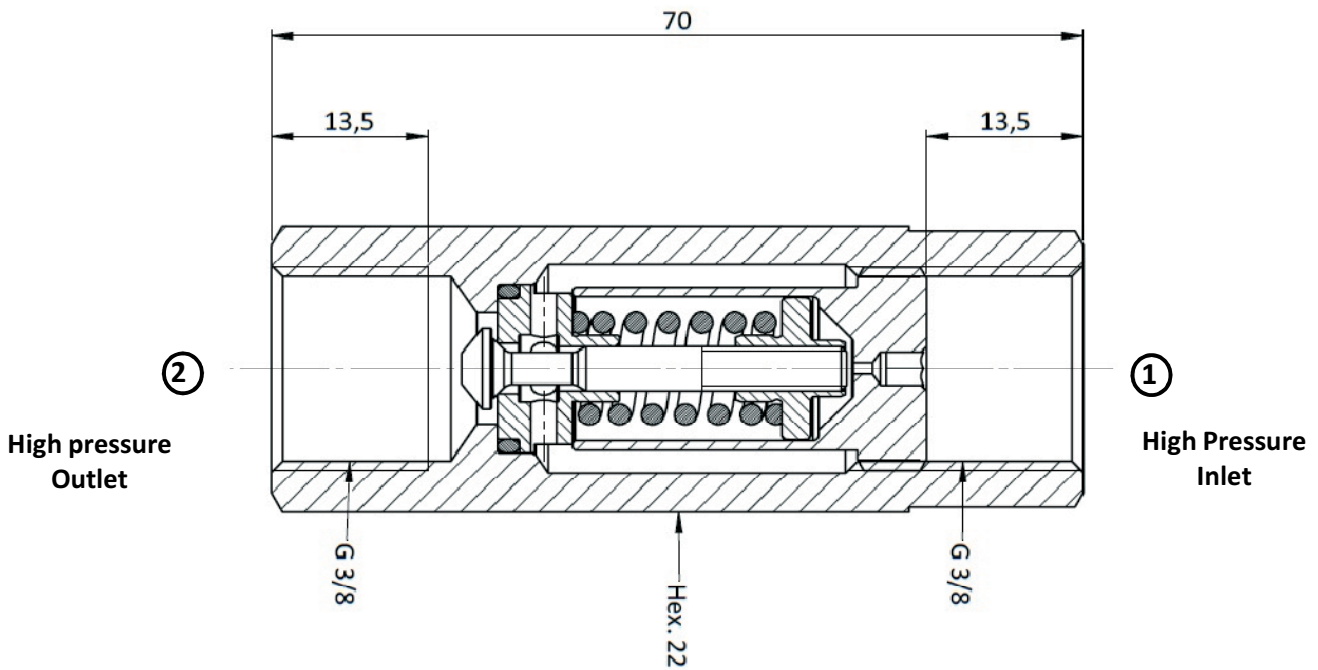
Technical Data

Maximum operating pressure: 420 bar
 Maximum flow: 60 l/min
 Maximum leakage: 1.00 cc/min to 80% of nominal set point
 Factory pressure settings established @10 l/min
 Reseat pressure: nominal 90% of crack pressure
 Anti-cav cracking pressure: <0.5 bar
 Temperature: -30°C to 110°C
 Fluids: Mineral-based or synthetics with lubricating properties at viscosities of 7.4 to 420 cSt
 Orientation: no restrictions
 Weight: 0.139 kg

NOTE: The performance chart illustrates flow handling capacity at maximum setting for each spring range option.

P/Q curves are recorded at $T_{oil} = 40^{\circ}C$ and 46 cSt

Cross Section



Ordering Code

S
Q
V
0
.
G
3
8
.
0
*
.
*
*
*

Valve Basic Code

Ports

G38 = GAS G3/8

Equivalent UNF or Metric ports available upon request

Pressure setting in [bar]

Note: Standard settings are multiple of 5 bars

Spring Range (see table below for available options)

Marking

0 = Standard factory marking

Customized markings can be done upon request

Spring Ranges

Spring Model Code	Pressure Setting Range [bar]	Spring Model Code	Pressure Setting Range [bar]
N	20-70	V	211-280
B	71-130	W	281-350
G	131-210	R	351-420