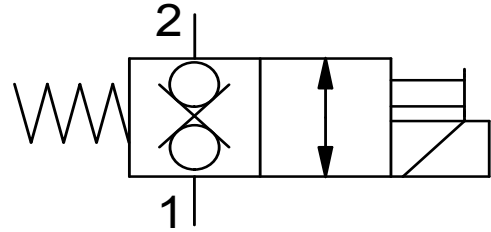
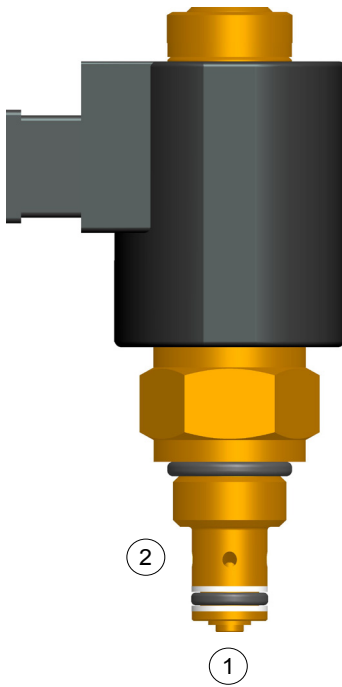


Solenoid valve
Direct Acting, Balanced Poppet
(2/2)



- $Q_{(max)}=22 \text{ lpm}$, $P_{(max)}=350 \text{ bar}$
- Screw -in Cartridge,
- Balanced Poppet, Solenoid Valve



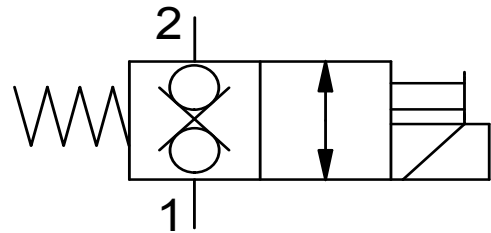
- When coil is de-energized it allow no flow from port 1 to 2, and 2 to 1.
- When coil is energized it allows flow from port 1 to 2, and 2 to 1.
- Hardened poppet & sleeve provides longer life.
- Preferred port should be 1 for inlet.
- Can be fitted in line mounting bodies.
- All external parts are **zinc plated ,chromated (CrVI-Free)**.
- Designed in accordance to **Industry common Cavities**.

1. Description -

This cartridge **normally closed, 2 position balanced poppet Solenoid operated** directional control valve. When coil is de-energized no flow from port 1 to 2, and 2 to 1. When coil is energized allows flow from port 1 to 2, and 2 to 1. Hardened spool & waterproof solenoid provides reliable and long life.
Port 1 to 2 operating limits 19 lpm at 340 bar.

Port 2 to 1 operating limits 12 lpm at 340 bar , 19 lpm at 240 bar.
All external parts of this cartridge are Zinc-plated and chromated (CrVI-free). All Valve parts are made up of high strength steel.
All cartridge valve 100% tested.
This cartridge valves is designed in accordancess to industry common

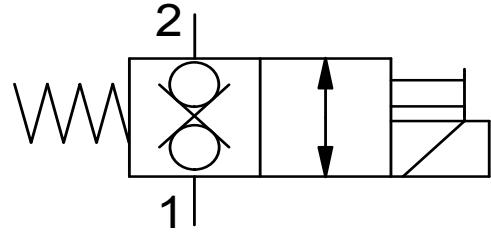
Solenoid valve
Direct Acting, Balanced Poppet
(2/2)



2. Technical Data :

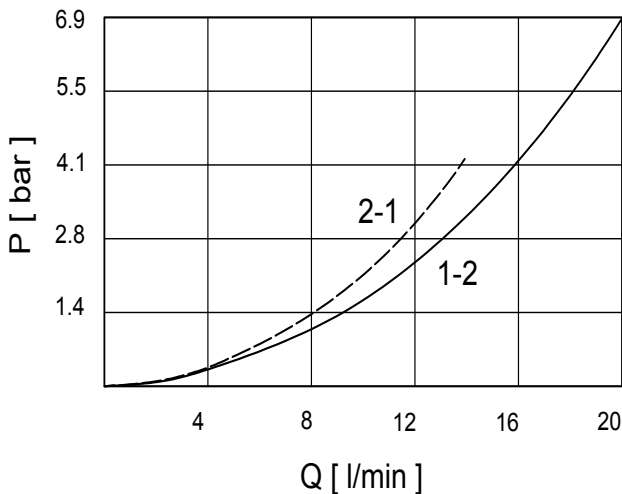
| S.no. | General Specification | Values |
|-------|----------------------------|-----------------------------------------------------------------------------|
| 1. | DESIGNATION | 2 WAY 2 POSITION, SOLENOID VALVE |
| 2. | MOUNTING METHOD | S08-2 CAVITY |
| 3. | MAXIMUM OPERATING PRESSURE | 350 BAR |
| 4. | MAXIMUM FLOW | 22 LPM |
| 6. | OPERATING TEMPERATURE | -30° TO +110° C |
| 7. | HYDRAULIC FLUID | MINERAL OILS WITH LUBRICATING PROPERTIES AT 15.....250 MM ² /SEC |
| 8. | MINIMUM FLUID CLEANINESS | ISO CLASS 20/18/15 |
| 9. | WEIGHT | 0.40 KG |
| 10. | INSTALLATION TORQUE | 45-55 N/M |
| 11. | SOLENOID COIL DETAIL | DC = 26WATT AC = 28-VA |
| 12. | INSULATION CLASS | CLASS-H |

Solenoid valve
Direct Acting, Balanced Poppet
(2/2)

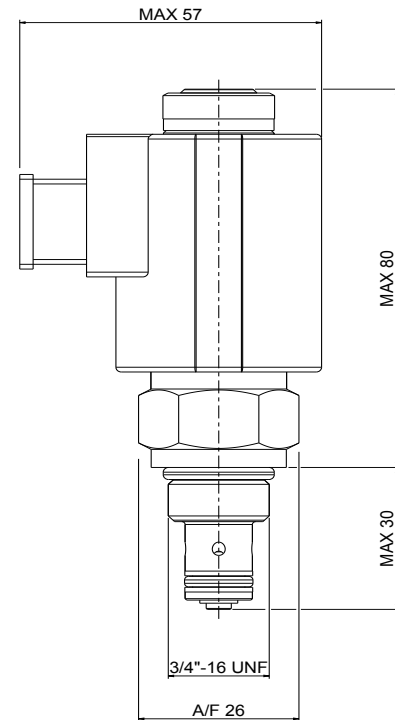


3. P-Q Characteristics :

Note: The Performance Chart shows Flow handling capacity at specific pressure setting P/Q Curve is recorded at Temp_{oil} = 40° C at 46 cst.



4. Dimensioning :



5. Ordering Code :

SOPV - 08 - C1 - X - X - XXX

VALVE BASIC CODE

CAVITY TYPE = 3/4" -16 UNF
METRIC CAVITY AVAILABLE ON
REQUEST

TYPE :

C1 = Normally closed balanced Poppet
2 Way , 2 Position

Terminals

D : Din-Type

HOUSING & PORTS

C : Cartridge only

XB1 : 1/4" BSP

XB6 : SAE #6

A : Aluminium Housing

S : Steel Housing

VOLTAGE

012 : 12 VDC

024 : 24 VDC

230 : 230 AC