

SHV0.G18 Valve Series

GAS Cartridge - 350 bar

Direct acting - Ball Type

Description

Shut-off valves for hydraulics systems, with two inlets and one outlet. Ball seat construction, automatic switching. The inlet with the higher pressure (port 1 or 3) is directly connected to tank (port 2), while the second inlet (port 3 or 1) is shut off.

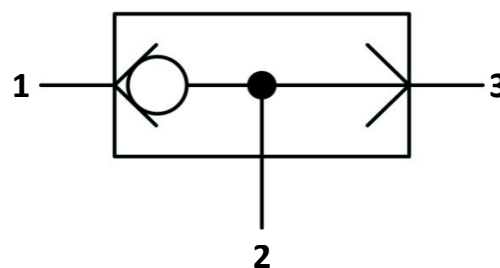
Technical Features

All valve parts are made of high strength steel to guarantee minimal wear and to extend service life. The very compact size make it suitable for installation into hydraulic integrated circuits, control units, and various valve combinations.

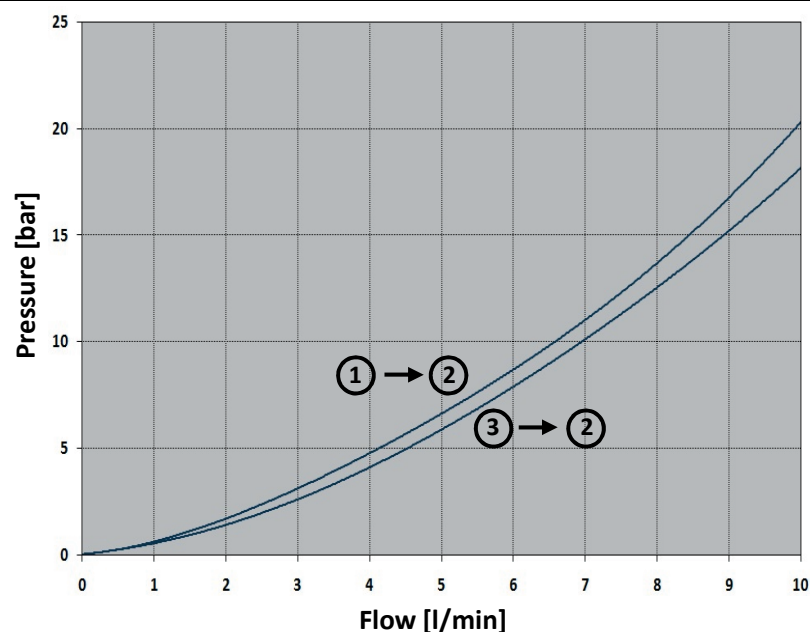


vis hydraulics

Symbols



Performance Details



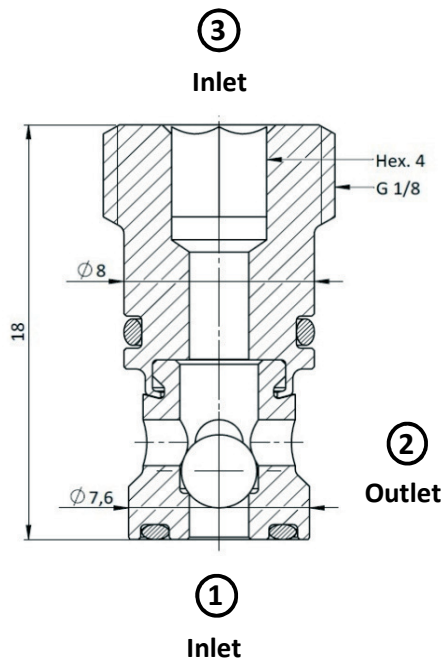
Technical Data

Maximum operating pressure: 350 bar
 Maximum flow: 10 l/min
 Internal leakage: 0.25 cc/min max @ 350 bar
 Temperature: -30°C to 110°C
 Fluids: Mineral-based or synthetics with lubricating properties at viscosities of 7.4 to 420 cSt
 Orientation: no restrictions
 Installation torque: 7-9 Nm
 Seal kit code: SK.023
 Weight: 0.006 kg

NOTE: The performance chart illustrates flow handling capacity in max flow condition.

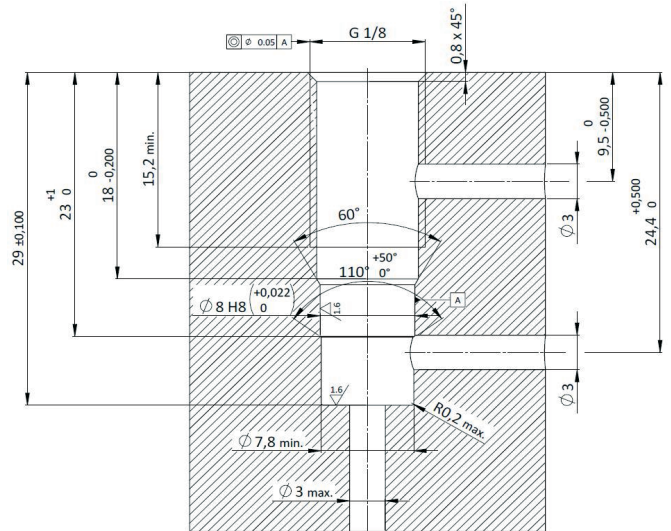
P/Q curves are recorded at $T_{oil} = 40^{\circ}C$ and 46 cSt

Cross Section



Cavity Details

VH017



See Page 277

Ordering Code

S H V 0 . G 1 8 . 0 0 . 0 0 0

↓
Valve Basic Code

←
Cavity
G18 = GAS G1/8
UNF or Metric cavity
available upon request

↘ 000 = standard configuration