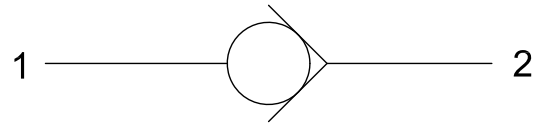
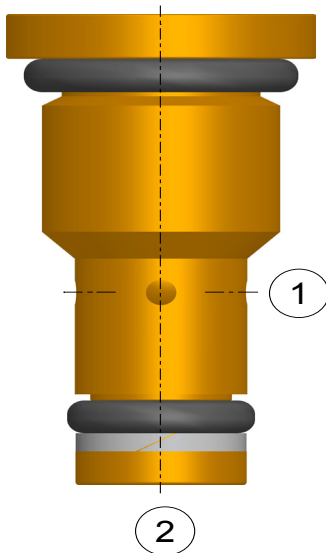


**Check Valve
Ball Type**



- $Q_{(max)}=10 \text{ lpm}$, $P_{(max)}=350 \text{ bar}$
- **Screw -in Cartridge,**
- **Direct Acting , Ball Type Design**



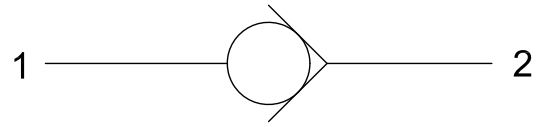
- Allows Free Flow from **Port #2**→ **Port #1**.
- Blocks Flow from **Port #1**→ **Port #2 - Acts as Load holding Device.**
- Available in **Leakproof screw adjustment / Fixed setting cap.**
- Can be fitted in **line mounting bodies.**
- All external parts are **zinc plated ,chromated (CrVI-Free).**
- Designed in accordance to **Industry common Cavities.**

1. Description -

SCB series cartridge valves are **Screw-in, Cartridge Type, Ball Type, Hydraulic Check Valves.** This cartridge are used for Blocking or Holding load in hydraulic system. This type of Check Valve allows free flow from Port #2 to Port#1. While blocking flow from Port #1 to Port#2- can be used for load holding at this position.

All external parts of this cartridge are Zinc-plated and chromated (CrVI-free). All Valve parts are made up of high strength steel.

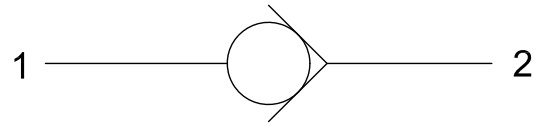
Check Valve
Ball Type



2. Technical Data :

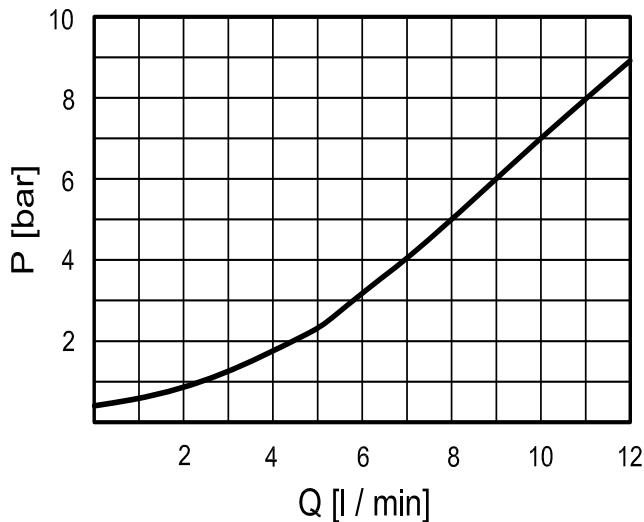
S.no.	General Specification	Values
1.	DESIGNATION	CHECK VALVE ,BALL TYPE
2.	MOUNTING METHOD	S04-2 CAVITY
3.	MAXIMUM OPERATING PRESSURE	350 BAR
4.	MAXIMUM FLOW	10 LPM
5.	MAXIMUM INTERNAL LEAKAGE	0.10 CC/MIN
6.	OPERATING TEMPERATURE	-30° TO +110° C
7.	HYDRAULIC FLUID	MINERAL OILS WITH LUBRICATING PROPERTIES AT 15.....250 MM ² /SEC
8.	MINIMUM FLUID CLEANINESS	ISO CLASS 20/18/15
9.	WEIGHT	0.05 KG
10.	INSTALLATION TORQUE	15-18 N/M

Check Valve Ball Type

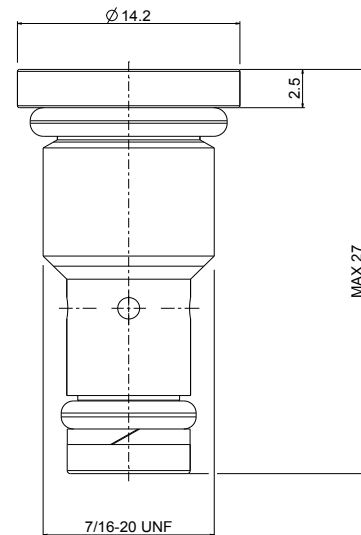


3. P-Q Characteristics :

Note: The Performance Chart shows Flow handling capacity at specific pressure setting P/Q Curve is recorded at Temp_{oil} = 40° C at 46 cst.



4. Dimensioning :



5. Ordering Code :

SCB - 04 - XXX

VALVE BASIC CODE

CAVITY TYPE = 7/16"-20 UNF
METRIC CAVITY AVAILABLE ON
REQUEST

Cracking Pressure (bar)
0.5 bar