

## RVD0.M20 Valve Series

**METRIC Cartridge - 420 bar**

**Direct acting - Poppet Type**

### Description

A screw-in, cartridge style, direct acting, poppet type, normally closed hydraulic relief valve. It's typically used to protect hydraulic components from pressure transients. When the pressure at the Inlet (1) reaches the valve setting, the valve starts to open to tank (2) throttling flow to minimize the pressure rise.

The innovative geometry of the deflector provides in fact a very low rise rate, and the poppet design guarantees great stability.

The cartridge offers quick response to load changes in hydraulic circuits requiring low internal leakage as well as limited hysteresis.

### Technical Features

All external surfaces are zinc plated and corrosion-proof.

All valve parts are made of high strength steel. Poppet is hardened and ground to guarantee minimal wear and to extend service life.

Adjustment screw cannot be backed out of the valve.

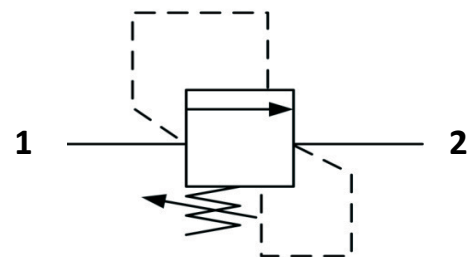
Optional spring ranges to 420 bar (6000 psi)

Back pressure on the tank port (port 2) is directly additive to the valve setting at a 1:1 ratio.

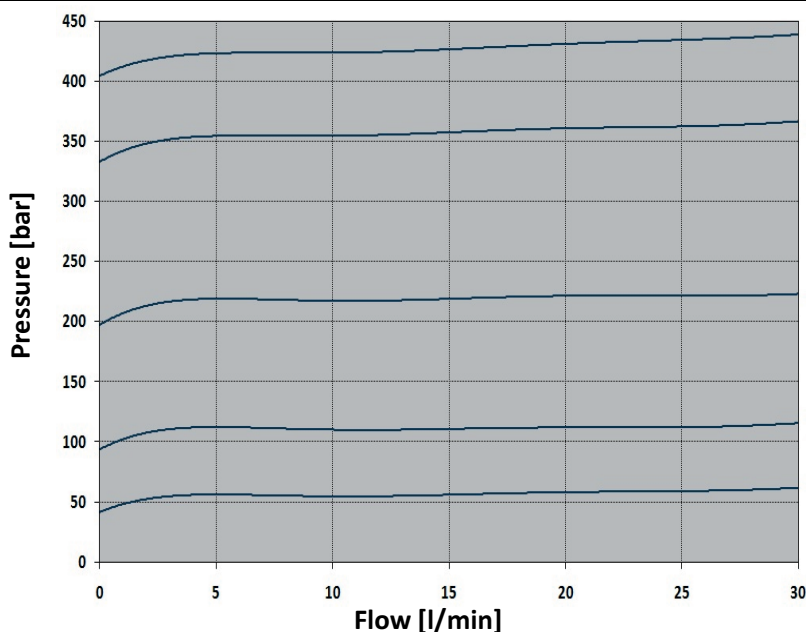
Metric cavity.



## Symbols



## Performance Details



### Technical Data

Maximum operating pressure: 420 bar

Maximum flow: 30 l/min

Maximum internal leakage: 1 cc/min to 80% of nominal set point

Factory pressure settings established @ 5 l/min

Reseat pressure: nominal 90% of crack pressure

Temperature: -30°C to 110°C

Fluids: Mineral-based or synthetics with lubricating properties at viscosities of 7.4 to 420 cSt

Orientation: no restrictions

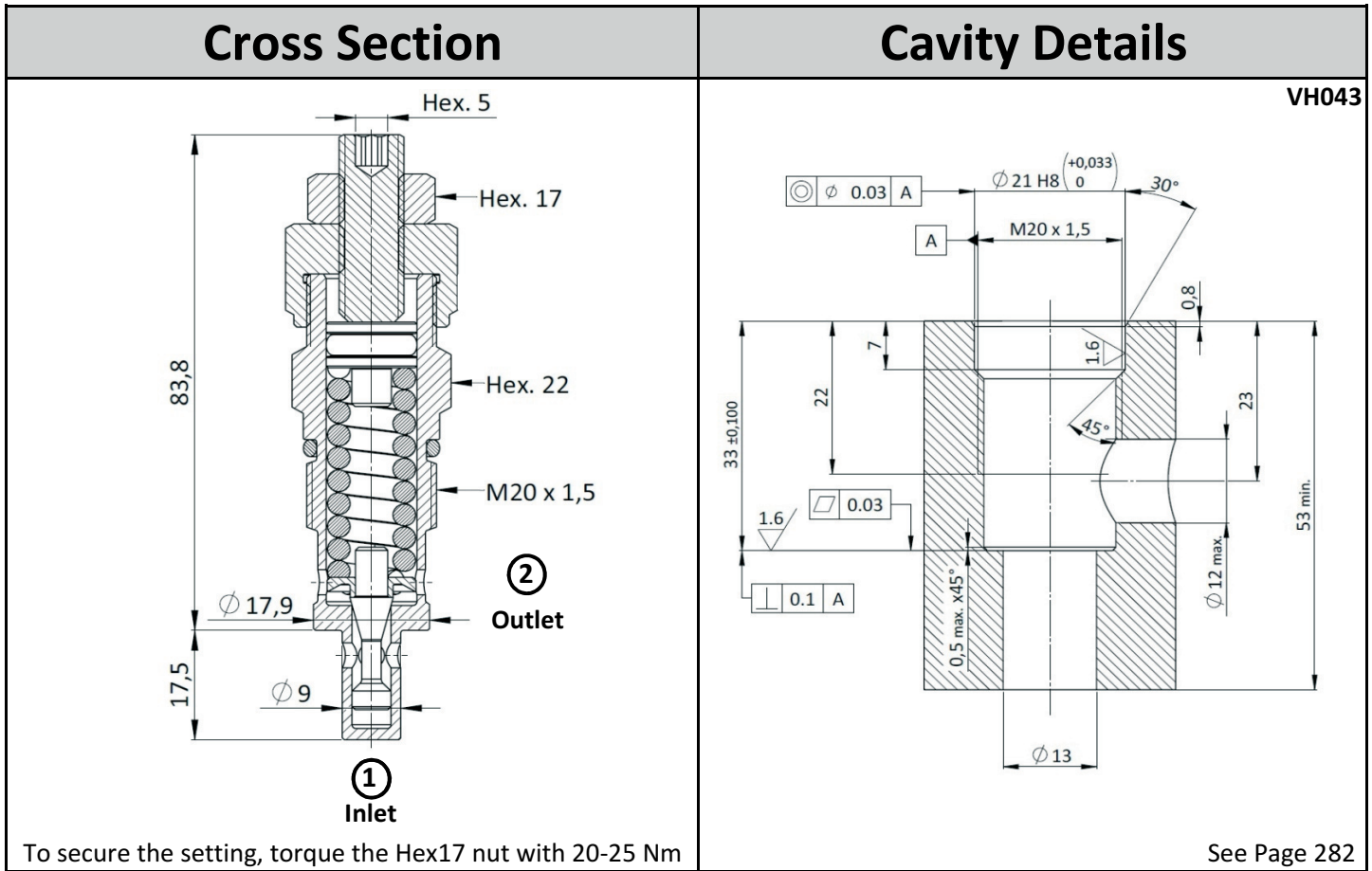
Installation torque: 45-50 Nm

Seal kit code: SK.020

Weight: 0.145 kg

NOTE: The performance chart illustrates flow handling capacity at maximum setting for each spring range option.

P/Q curves are recorded at  $T_{oil} = 40^{\circ}C$  and 46 cSt



## Ordering Code

R	V	D	0	.	M	2	0	.	0	*	.	*	*	*	
↓					↓				↓			↓			
<b>Valve Basic Code</b>					<b>Cavity</b>				<b>Marking</b>			<b>Pressure setting in [bar]</b>			
					M20 = M20 x 1.5				0 = Standard factory marking Customized markings can be done upon request			000 = no specific setting required			
									→			→			
									→			→			
									→			→			

Spring Ranges				Options
Spring Model Code	Pressure Setting Range [bar]	Spring Model Code	Pressure Setting Range [bar]	<p>Plastic tamper proof cap. Ordering code: <b>CTP.004</b></p>
<b>Y</b>	5-55	<b>G</b>	100-350	
<b>N</b>	25-110	<b>V</b>	100-420	
<b>B</b>	50-215			

Specifications may change without notice.