

RVB0.S08 Valve Series

SAE08 Cartridge - 420 bar

Direct acting - Poppet Type

Description

A screw-in, cartridge style, direct acting, poppet type, normally closed hydraulic relief valve. It's typically used to protect hydraulic components from pressure transients. When the pressure at the Inlet (1) reaches the valve setting, the valve starts to open to tank (2) and thanks to the effect of the deflector integrated into the poppet it provides a limited pressure rise.

The cartridge offers excellent response to load changes in hydraulic circuits requiring low internal leakage as well as limited hysteresis.

Technical Features

All external surfaces are zinc plated and corrosion-proof.

All valve parts are made of high strength steel. Poppet is hardened and ground to guarantee minimal wear and to extend service life.

Positive stop prevents springs from going solid.

Optional spring ranges to 420 bar (6000 psi)

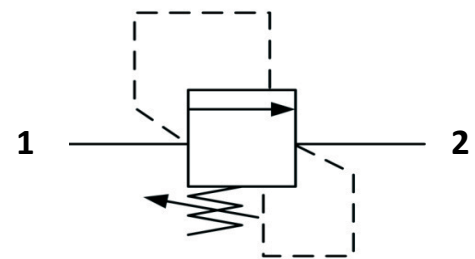
Back pressure on the tank port (port 2) is directly additive to the valve setting at a 1:1 ratio.

Industry common cavity.

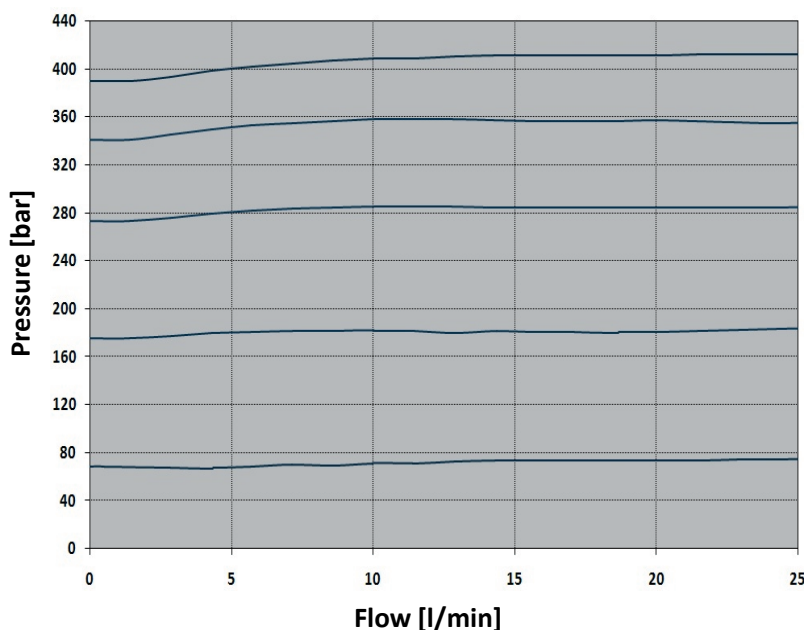
Warning: Adjustment screw doesn't have a positive stop which prevents it from being backed out of the valve.



Symbols



Performance Details



Technical Data

Maximum operating pressure: 420 bar

Maximum flow: 25 l/min

Maximum internal leakage: 0.25 cc/min to 80% of nominal set point

Factory pressure settings established @ 5 l/min

Reseat pressure: nominal 90% of crack pressure

Temperature: -30°C to 110°C

Fluids: Mineral-based or synthetics with lubricating properties at viscosities of 7.4 to 420 cSt

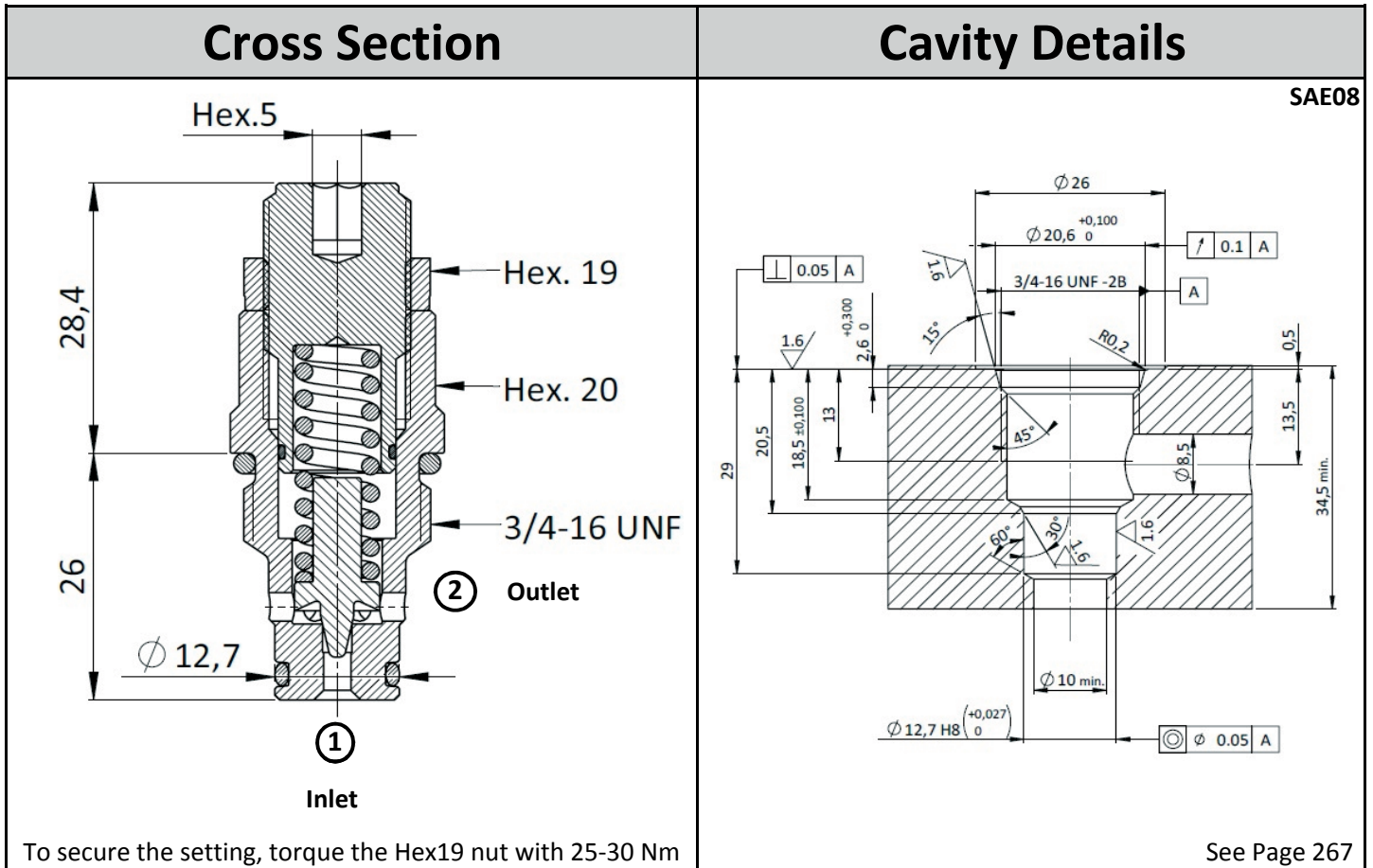
Orientation: no restrictions

Installation torque: 40-45 Nm

Seal kit code: SK.030

Weight: 0.100 kg

NOTE: The performance chart illustrates flow handling capacity at significant pressure settings. P/Q curves are recorded at $T_{oil} = 40^\circ\text{C}$ and 46 cSt



Ordering Code

R V B 0 . **S 0 8** . **0 *** . *** * ***

↓
Valve Basic Code

←
Cavity
S08 = UNF - SAE08
Metric cavity available upon request

→ **Pressure setting in [bar]**
000 = no specific setting required

→ **Spring Range** (see table below for available options)

→ **Marking** 0 = Standard factory marking
Customized markings can be done upon request

Spring Ranges				Options
Spring Model Code	Optimized (Total) p Set Range [bar]	Spring Model Code	Optimized (Total) p Set Range [bar]	<p>Plastic tamper proof cap. 2 pieces are needed to build 1 complete cap. Ordering code: CTP.001</p>
Y	20-70	B	181-280 (100-290)	
S	10-160	G	281-350 (130-350)	
N	71-180 (50-180)	V	351-420 (170-420)	

Specifications may change without notice.