

## RVB0.M16 Valve Series

**METRIC Cartridge - 450 bar**

**Direct acting - Poppet Type**

### Description

A screw-in, cartridge style, direct acting, poppet type, normally closed hydraulic relief valve. It's typically used to protect hydraulic components from pressure transients. When the pressure at the Inlet (1) reaches the valve setting, the valve starts to open to tank (2) providing a limited pressure rise.

The reduced dimensions and the excellent response time make this valve ideally suited for pilot circuits.

Hysteresis is also extremely low.

### Technical Features

All external surfaces are zinc plated and corrosion-proof.

All valve parts are made of high strength steel. Poppet is hardened and ground to guarantee minimal wear and to extend service life.

In case adjustment screw is backed out of the valve, no external leakage is expected (sealed spring seat)

Optional spring ranges to 450 bar (6700 psi)

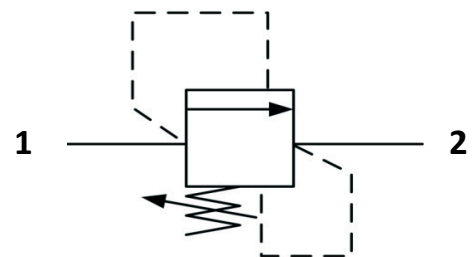
Back pressure on the tank port (port 2) is directly additive to the valve setting at a 1:1 ratio.

Metric cavity.

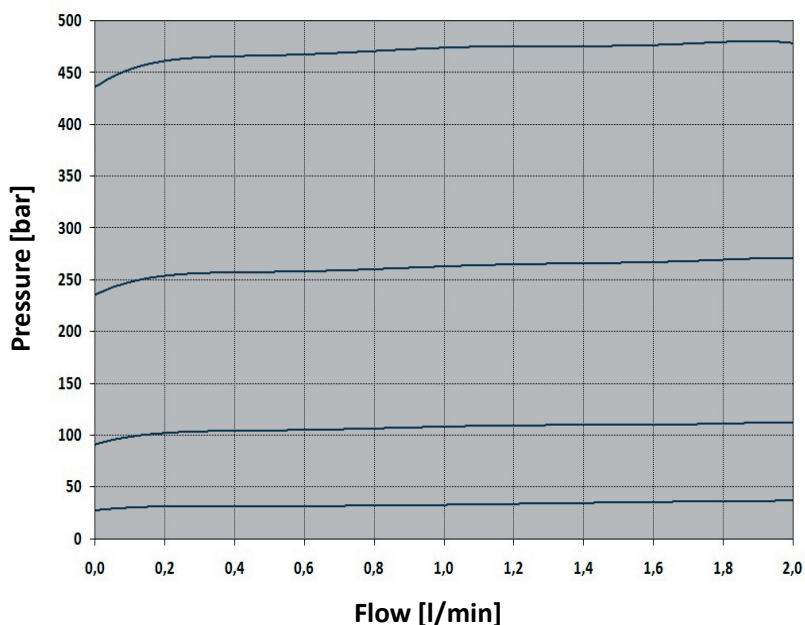


vis hydraulics

## Symbols



## Performance Details



### Technical Data

Maximum operating pressure: 450 bar

Maximum flow: 2 l/min

Maximum internal leakage: 0.25 cc/min to 80% of nominal set point

Pressure settings established at cracking point

Reseat pressure: nominal 90% of crack pressure

Temperature: -30°C to 110°C

Fluids: Mineral-based or synthetics with lubricating properties at viscosities of 7.4 to 420 cSt

Orientation: no restrictions

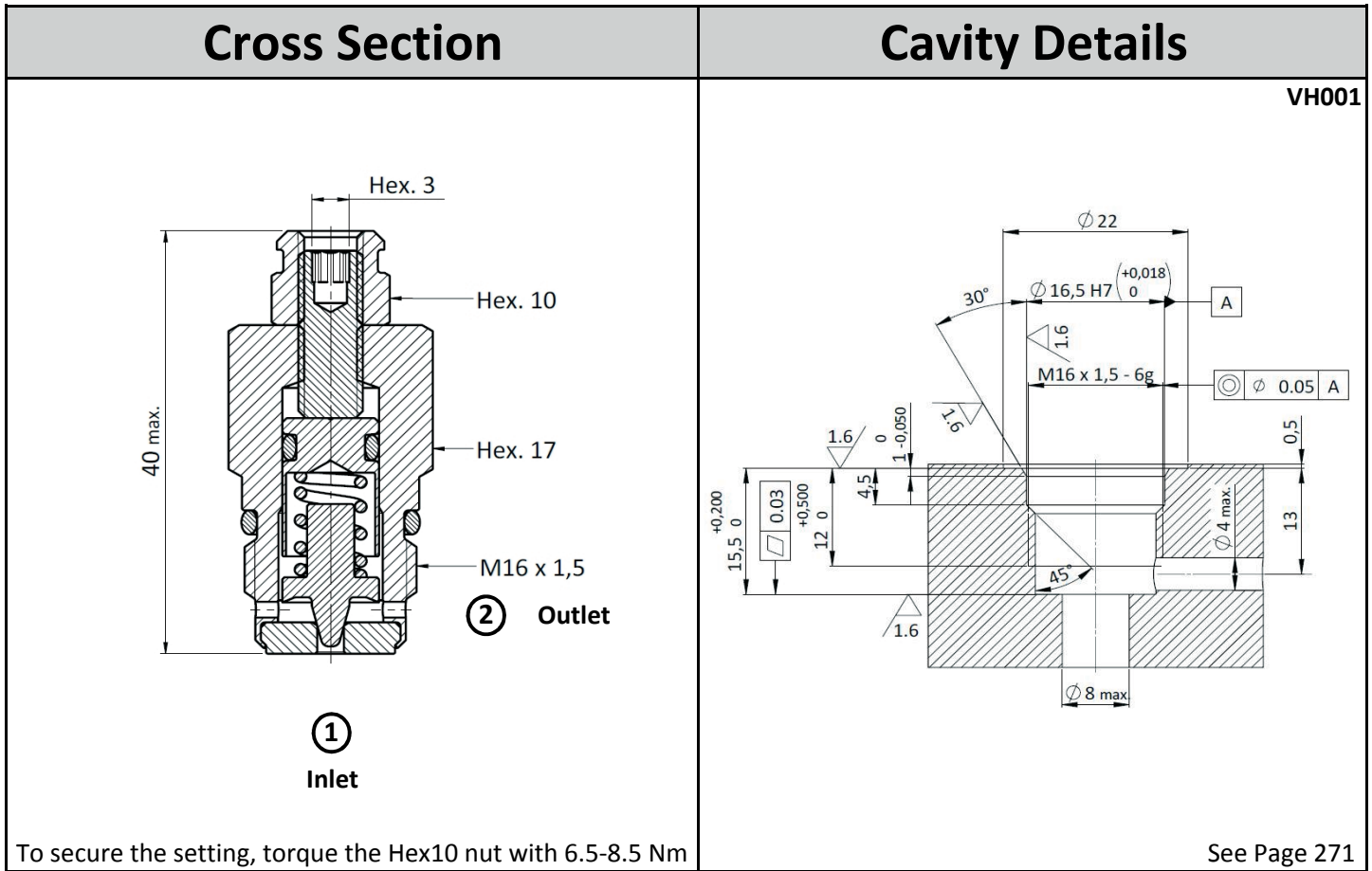
Installation torque: 30-40 Nm

Seal kit code: SK.004

Weight: 0.050 kg

NOTE: The performance chart illustrates flow handling capacity at maximum setting for each spring range option.

P/Q curves are recorded at  $T_{oil} = 40^\circ\text{C}$  and 46 cSt



## Ordering Code

R	V	B	0	.	M	1	6	.	0	*	.	*	*	*
↓				↓				↓		↓		↓		
<b>Valve Basic Code</b>				<b>Cavity</b>				<b>Marking</b>		<b>Spring Range</b>		<b>Pressure setting in [bar]</b>		
				M16 = Standard metric cavity No other cavity options available				0 = Standard factory marking Customized markings can be done upon request		000 = no specific setting required		(see table below for available options)		

Spring Ranges		Options
Spring Model Code	Optimized (Total) p Set Range [bar]	<p style="text-align: center;">Plastic tamper proof cap. Ordering code: <b>CTP.002</b></p>
<b>Y</b>	1-30	
<b>N</b>	31-100 (10-100)	
<b>B</b>	101-250 (10-250)	
<b>G</b>	251-450 (10-450)	

Specifications may change without notice.