

Pilot Check Valves

PCR0.S10 Valve Series

SAE Cartridge - 350 bar

Direct acting check valve - Pilot Spool to open

Description

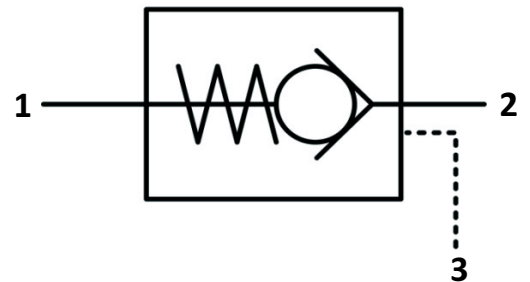
Cartridge style, Normally closed, single pilot check valve.
 Cartridge is closed until sufficient pressure is applied on port 2 to reach the bias spring setting, push the poppet and allow free flow to 1.
 The valve is normally closed from 1 to 2.
 When sufficient pressure is applied on port 3, the pilot spool pushes the poppet from its seat and allows flow from 1 to 2.
 Very limited leakage in the check condition.

Technical Features

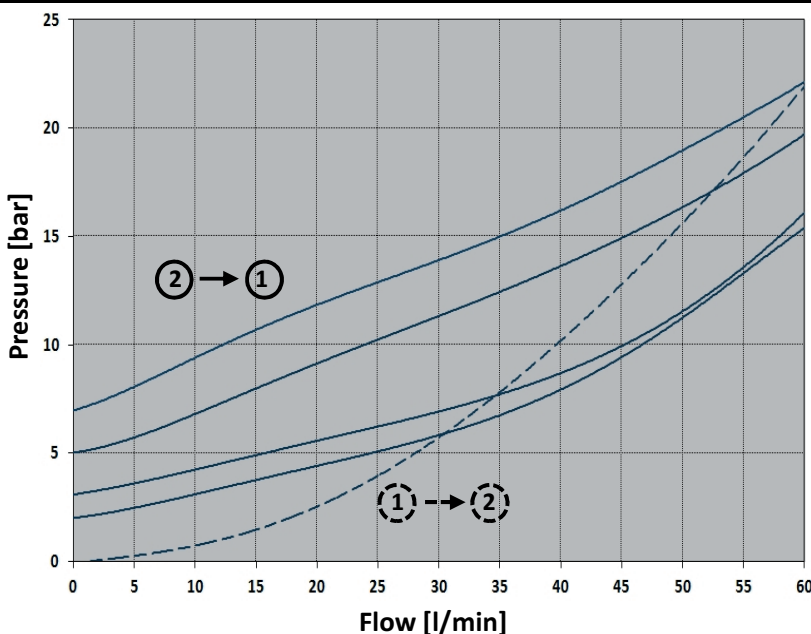
All external surfaces are zinc plated and corrosion-proof.
 All valve parts are made of high strength steel. Poppet is hardened and ground to guarantee minimal wear and to extend service life.
 Pilot spool is hardened and ground, sealed to prevent leakage.
 High durometer, extrusion resistant seals.
 Optional bias springs for back-pressure application flexibility.
 Industry SAE common cavity.



Symbols



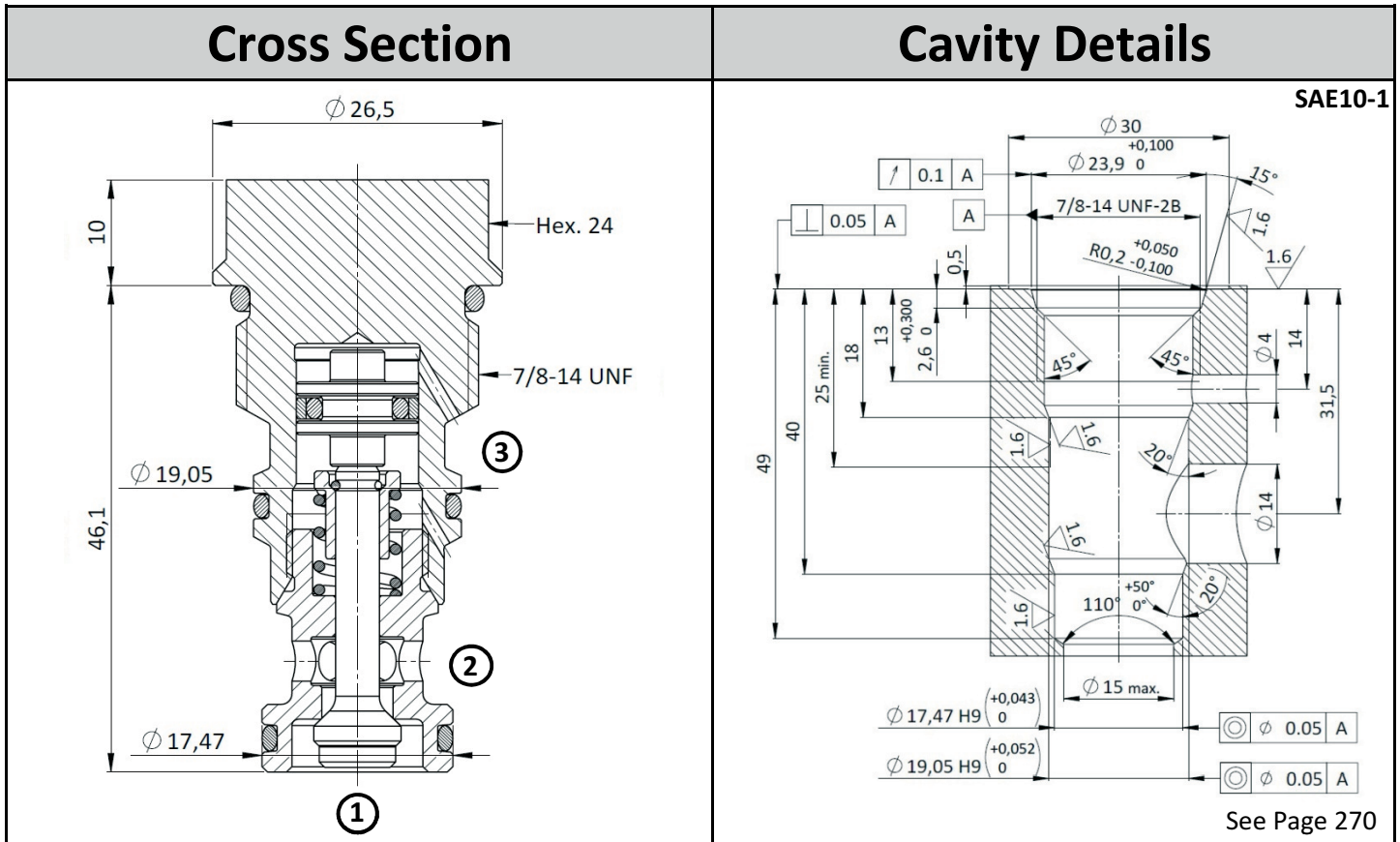
Performance Details



Technical Data

Maximum operating pressure: 350 bar
 Maximum flow: 60 l/min
 Internal leakage: 0.10 cc/min max @ 350 bar
 Pilot ratio 3:1
 Temperature: -30°C to 110°C
 Fluids: Mineral-based or synthetics with lubricating properties at viscosities of 7.4 to 420 cSt
 Orientation: no restrictions
 Installation torque: 40-45 Nm
 Seal kit code: SK.048
 Weight: 0.110 kg

NOTE: The performance chart illustrates flow handling capacity each spring bias option.
 P/Q curves are recorded at $T_{oil} = 40^{\circ}C$ and 46 cSt



Ordering Code

P	C	R	0
---	---	---	---

↓
Valve Basic Code

Options ←

4 = Without O-ring on the pilot spool

S	1	0
---	---	---

↓
Cavity

S10 = UNF - SAE10-1
Metric cavity available upon request

0	*
---	---

↓
Marking

0 = Standard factory marking
Customized markings can be done upon request

0	0	0
---	---	---

→ **000** = standard configuration

→ **Bias Spring** (see table below for available options)

Bias Spring Options	
Spring Model Code	Cracking pressure [bar]
Y	2
N	3
B	5
G	7

Specifications may change without notice.