

FRS0.G14 Valve Series

GAS Cartridge - 250 bar

Direct acting - Pressure Compensated

Description

A direct acting, screw-in insert type, 2-way pressure compensated flow control valve.

The flow rate of this valve in the 1 to 2 flow path is largely independent of the system pressure and is determined by the dimension of a calibrated orifice.

The valve cannot be adjusted for variable flow output.

Free flow in the 2 to 1 path is allowed and not pressure compensated

Technical Features

External surfaces are oxide burnished and corrosion-protected.

All valve parts are made of high strength steel. Spool is hardened and ground to guarantee low wear and to extend service life.

Suitable for heavy duty applications.

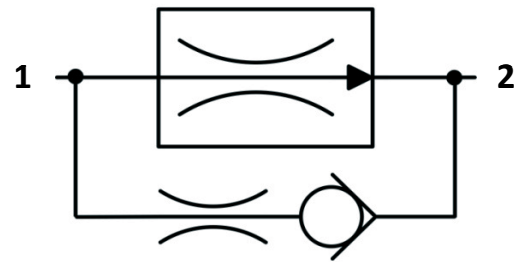
Extremely compact size.

GAS cavity.

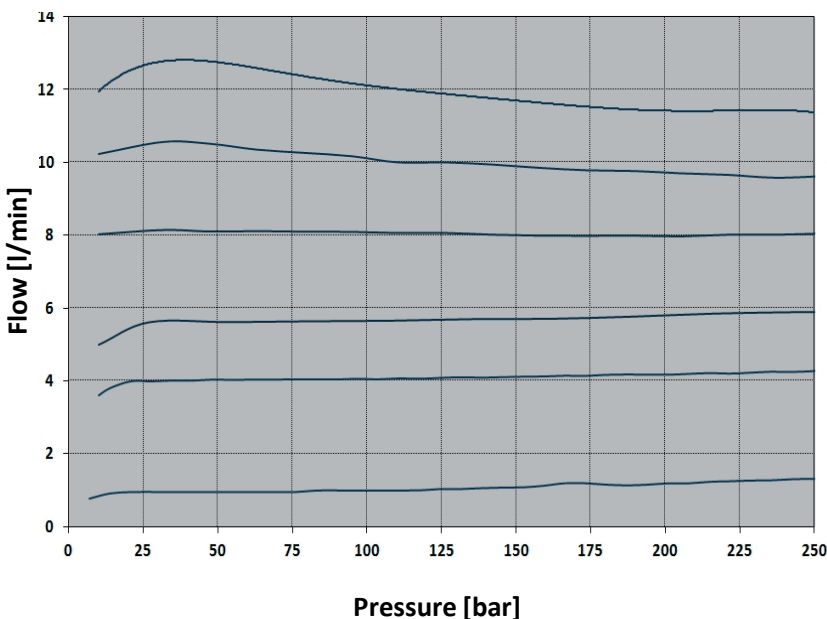


vis hydraulics

Symbols



Performance Details



Technical Data

Maximum operating pressure: 250 bar

Maximum pressure compensated flow: 12 l/min

Temperature: -30°C to 110°C

Fluids: Mineral-based or synthetics with lubricating properties at viscosities of 7.4 to 420 cSt

Orientation: no restrictions

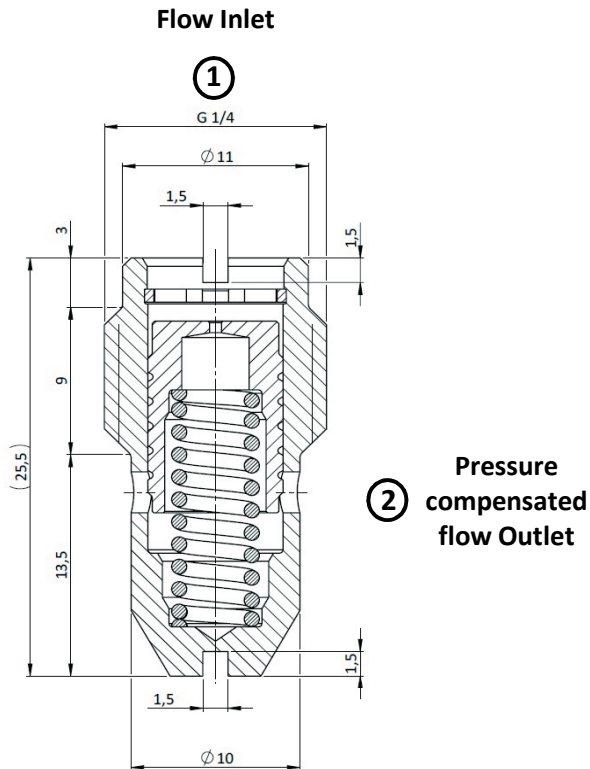
Installation torque: 3-5 Nm

Weight: 0.013 kg

NOTE: The performance chart illustrates flow handling capacity in the pressure compensated mode for a few significant flow settings.

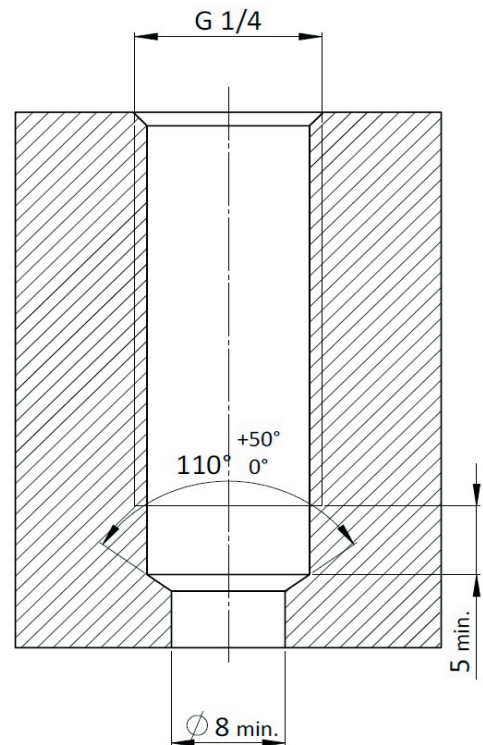
P/Q curves are recorded at $T_{oil} = 40^\circ\text{C}$ and 46 cSt

Cross Section



Cavity Details

VH028



See Page 280

Ordering Code

F R S * . **G 1 4** . **0 N** . *** * ***

Valve Basic Code

Cavity

G14 = GAS G1/4
UNF or Metric cavities available upon request

Fixed Flow setting (l/min with 1 decimal)
See table below for standard fixed flow options
Customized fixed flows can be provided upon request.

Flow setting range 0 = 1 - 12 l/min
1 = 0,5 - 1 l/min

Flow setting options

F R S 0	2 l/min	020	12 l/min	120	F R S 1	0,6 l/min	006
	3 l/min	030	15 l/min	150		0,8 l/min	008
	4 l/min	040				1 l/min	010
	5 l/min	050					
	6 l/min	060					
	7 l/min	070					
	8 l/min	080					
	9 l/min	090					
	10 l/min	100					
	11 l/min	110					

Specifications may change without notice.