

FRS0.G12 Valve Series

GAS Cartridge - 250 bar

Direct acting - Pressure Compensated

Description

A direct acting, screw-in insert type, 2-way pressure compensated flow control valve.

The flow rate of this valve in the 1 to 2 flow path is largely independent of the system pressure and is determined by the dimension of a calibrated orifice.

The valve cannot be adjusted for variable flow output.

Free flow in the 2 to 1 path is allowed and not pressure compensated

Technical Features

External surfaces are oxide burnished and corrosion-protected.

All valve parts are made of high strength steel. Spool is hardened and ground to guarantee low wear and to extend service life.

Suitable for heavy duty applications.

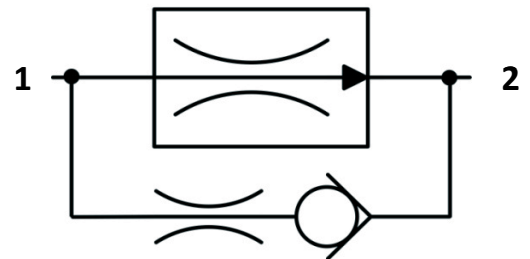
Extremely compact size.

GAS cavity.

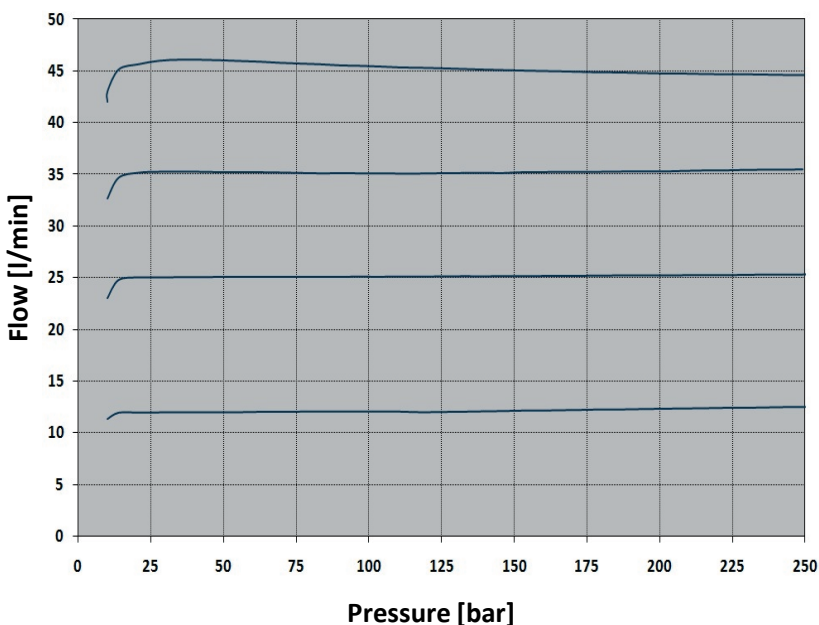


vis hydraulics

Symbols



Performance Details



Technical Data

Maximum operating pressure: 250 bar

Maximum pressure compensated flow: 45 l/min

Temperature: -30°C to 110°C

Fluids: Mineral-based or synthetics with lubricating properties at viscosities of 7.4 to 420 cSt

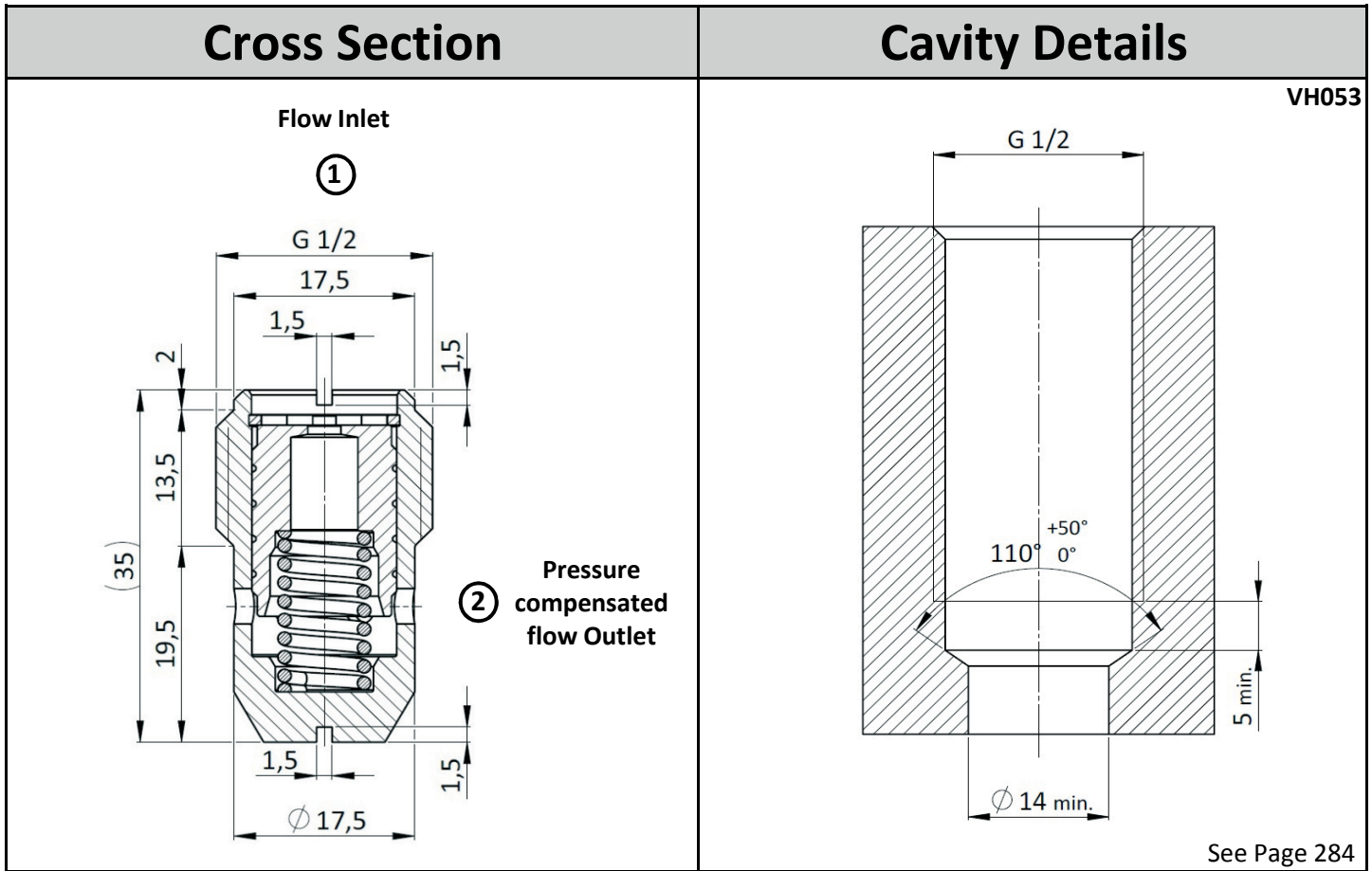
Orientation: no restrictions

Installation torque: 8-12 Nm

Weight: 0.054 kg

NOTE: The performance chart illustrates flow handling capacity in the pressure compensated mode for a few significant flow settings.

P/Q curves are recorded at $T_{oil} = 40^\circ\text{C}$ and 46 cSt



Ordering Code

F	R	S	0	.	G	1	2	.	0	N	.	*	*	*
↓				↓							↓			
Valve Basic Code											Fixed Flow setting (l/min with 1 decimal)			
				Cavity							See table below for standard fixed flow options			
				G12 = GAS G1/2							Customized fixed flows can be provided upon request.			
				UNF or Metric cavities available upon request										

Flow setting options	
12 l/min	120
16 l/min	160
20 l/min	200
25 l/min	250
30 l/min	300
35 l/min	350
40 l/min	400
45 l/min	450

Specifications may change without notice.