

## FRD0.S08 Valve Series

**Hybrid SAE08 Cartridge - 250 bar**

**Direct acting - Pressure Compensated**

### Description

A direct acting, drop-in insert type, 2-way pressure compensated flow control valve.

The flow rate of this valve in the 1 to 2 flow path is largely independent of the system pressure and is determined by the dimension of a calibrated orifice.

The valve cannot be adjusted for variable flow output.

Free flow in the 2 to 1 path is allowed and not pressure compensated

### Technical Features

External surfaces are oxide burnished and corrosion-protected.

All valve parts are made of high strength steel. Spool is hardened and ground to guarantee low wear and to extend service life.

Suitable for heavy duty applications.

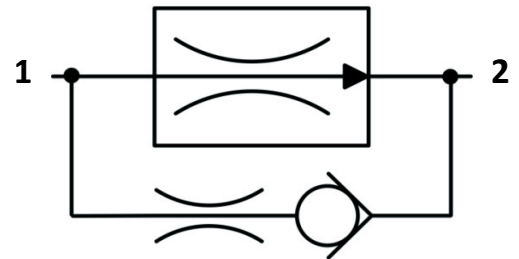
Extremely compact size.

Industry commonly used hybrid cavity.

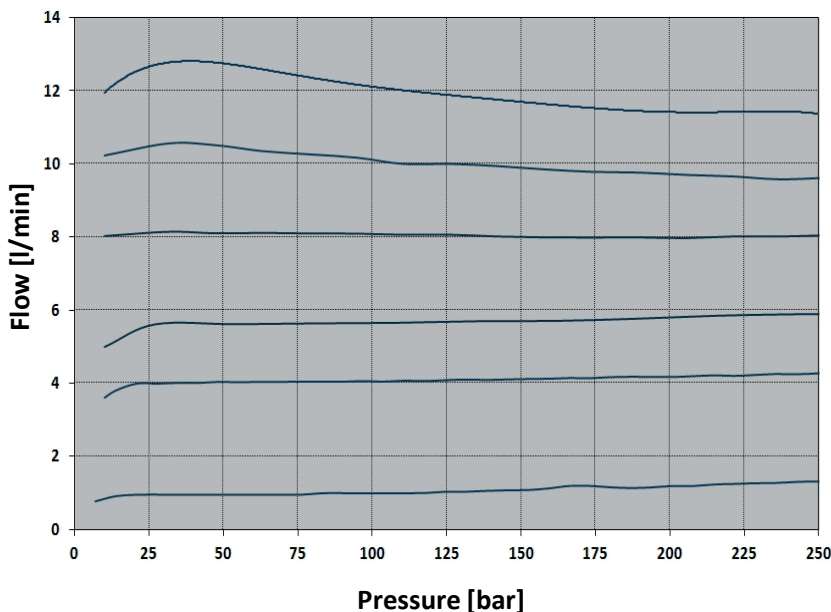


vis hydraulics

## Symbols



## Performance Details



### Technical Data

Maximum operating pressure: 250 bar

Maximum pressure compensated flow: 12 l/min

Temperature: -30°C to 110°C

Fluids: Mineral-based or synthetics with lubricating properties at viscosities of 7.4 to 420 cSt

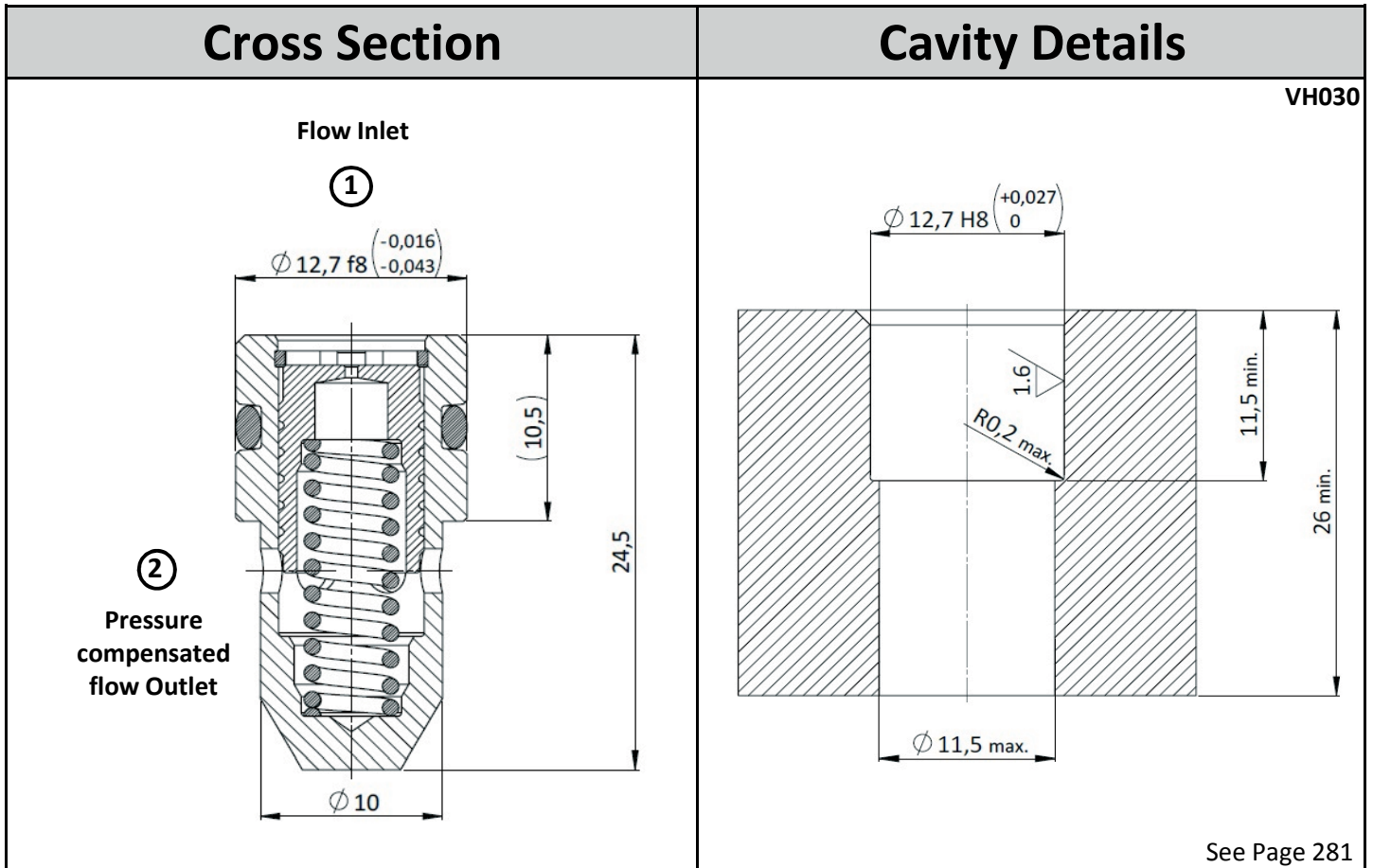
Orientation: no restrictions

Seal kit code: SK.060

Weight: 0.013 kg

NOTE: The performance chart illustrates flow handling capacity in the pressure compensated mode for a few significant flow settings.

P/Q curves are recorded at  $T_{oil} = 40^{\circ}C$  and 46 cSt



## Ordering Code

F	R	D	*	.	S	0	8	.	0	N	.	*	*	*
↓					↓				↓					
<b>Valve Basic Code</b>					<b>Cavity</b> S08 = Ø12.7mm bore size				<b>Fixed Flow setting</b> (l/min with 1 decimal) See table below for standard fixed flow options Customized fixed flows can be provided upon request.					
↓					↓						↓			
<b>Flow setting range</b>					<b>0</b> = 1 - 12 l/min						<b>1</b> = 0,5 - 1 l/min			

Flow setting options	
1 l/min	010
2 l/min	020
3 l/min	030
4 l/min	040
5 l/min	050
6 l/min	060
7 l/min	070
8 l/min	080
9 l/min	090
10 l/min	100

Specifications may change without notice.