

FRC0.S10 Valve Series

SAE10 Cartridge - 250 bar

Direct acting - Pressure Compensated

Description

A direct acting, screw-in cartridge type, 2-way pressure compensated flow control valve.

The flow rate of this valve in the 1 to 2 flow path is largely independent of the system pressure and is determined by the dimension of a calibrated orifice.

The valve cannot be adjusted for variable flow output.

Free flow in the 2 to 1 path is allowed and not pressure compensated

Technical Features

External surfaces are oxide burnished and corrosion-protected.

All valve parts are made of high strength steel. Spool is hardened and ground to guarantee low wear and to extend service life.

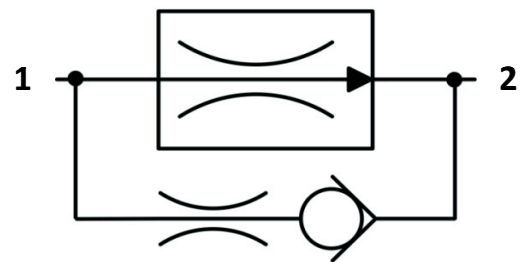
Suitable for heavy duty applications.

Compact size.

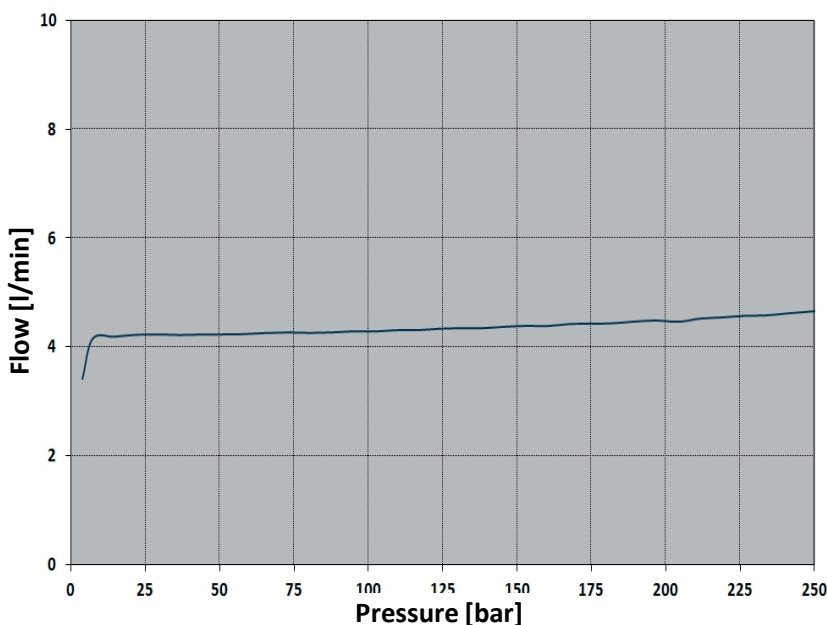
Industry common cavity.



Symbols



Performance Details



Technical Data

Maximum operating pressure: 250 bar

Maximum pressure compensated flow: 20 l/min

Temperature: -30°C to 110°C

Fluids: Mineral-based or synthetics with lubricating properties at viscosities of 7.4 to 420 cSt

Orientation: no restrictions

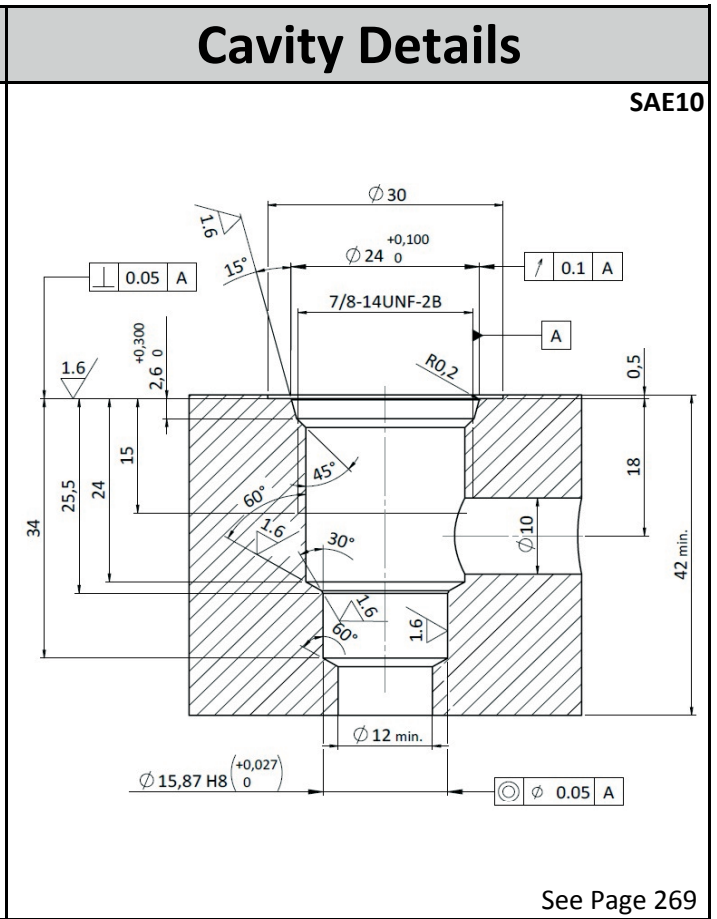
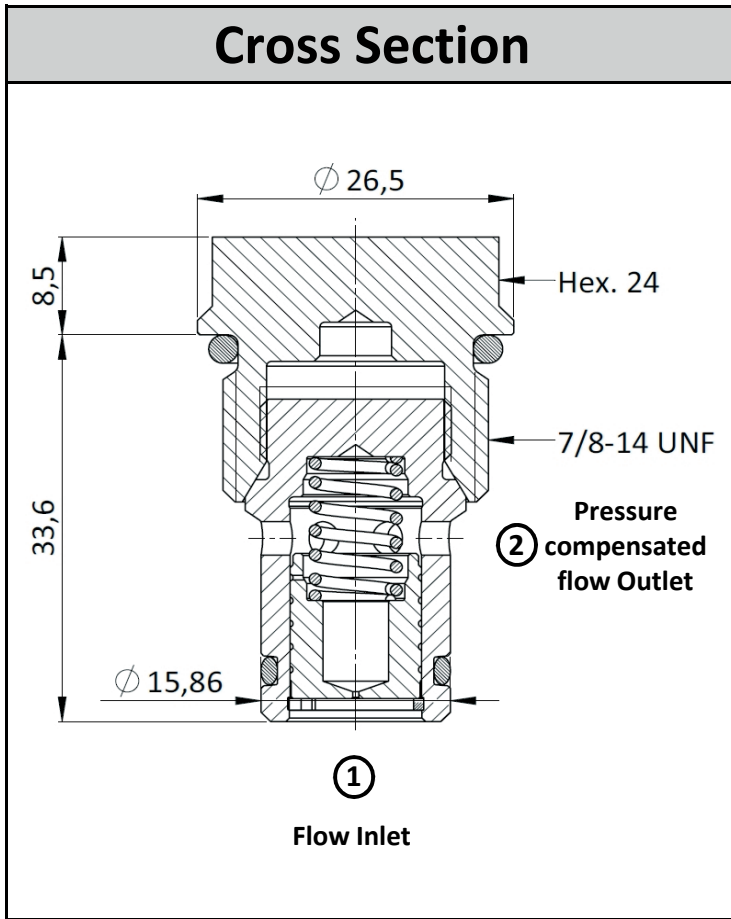
Installation torque: 40-45 Nm

Seal kit code: SK.032

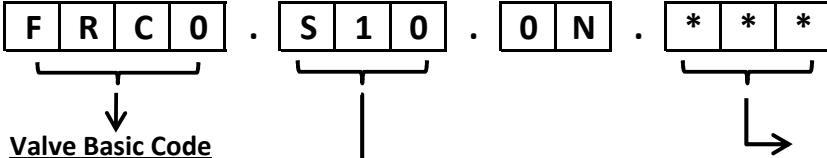
Weight: 0.090 kg

NOTE: The performance chart illustrates flow handling capacity in the pressure compensated mode.

P/Q curve is recorded at $T_{oil} = 40^\circ\text{C}$ and 46 cSt



Ordering Code



Valve Basic Code

Cavity
 SAE10 = UNF - SAE10
 Metric cavities available upon request

Fixed Flow setting (l/min with 1 decimal)
 See table below for standard fixed flow options
 Customized fixed flows can be provided upon request.

Flow setting options

2 l/min	020
4 l/min	040
6 l/min	060
8 l/min	080
10 l/min	100
12 l/min	120
14 l/min	140
16 l/min	160
18 l/min	180
20 l/min	200

Specifications may change without notice.