

CVD0.G14 Valve Series

GAS Cartridge - 350 bar

Direct acting - Poppet Type

Description

A screw-in, direct acting, poppet type in-line check valve.

Main use is as a blocking or load-holding device.

The CVD0.G14 allows flow passage from port 1 to 2: the cartridge has a guided check which is spring-biased closed until sufficient pressure is applied at port 1 to open to 2.

The flow is blocked in the opposite direction (2 to 1).

Technical Features

External surfaces are oxide burnished and corrosion-protected.

All valve parts are made of high strength steel. Poppet and seat are hardened and ground to guarantee low wear and to extend service life

Suitable for heavy duty applications.

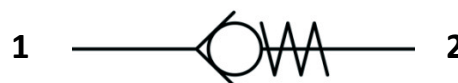
Extremely compact size.

GAS cavity.

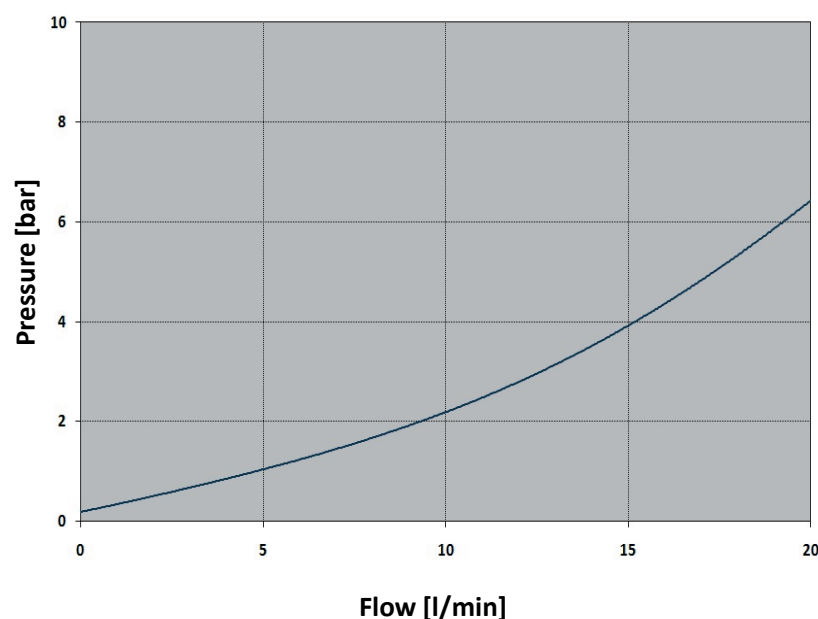


vis hydraulics

Symbols



Performance Details



Technical Data

Maximum operating pressure: 350 bar

Maximum flow: 20 l/min

Leakage: 0.10 cc/min max @ 350 bar

Temperature: -30°C to 110°C

Fluids: Mineral-based or synthetics with lubricating properties at viscosities of 7.4 to 420 cSt

Orientation: no restrictions

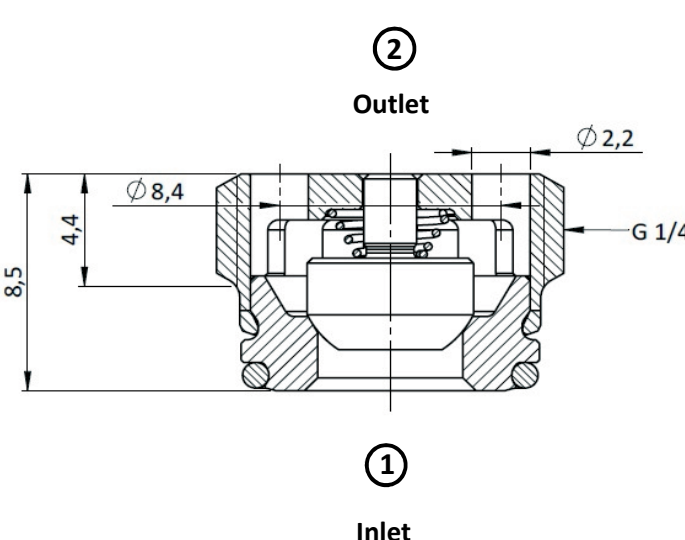
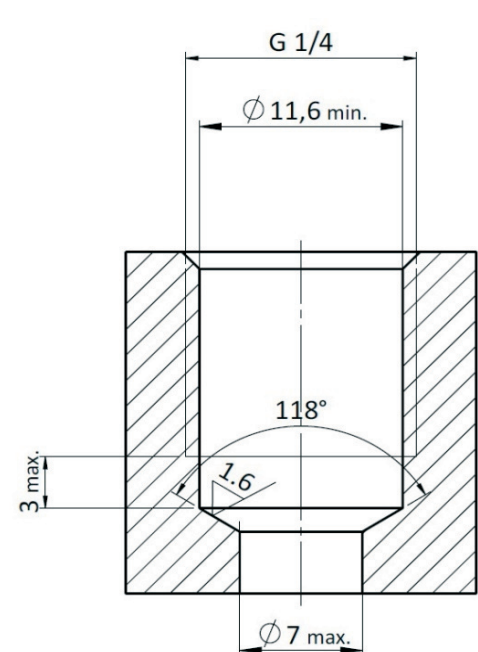
Installation torque: 6 Nm

Seal kit code: SK.016


Weight: 0.005 kg

NOTE: The performance chart illustrates flow handling capacity.

P/Q curve is recorded at $T_{oil} = 40^{\circ}\text{C}$ and 46 cSt

Cross Section	Cavity Details
 <p>② Outlet</p> <p>① Inlet</p> <p>8,5</p> <p>4,4</p> <p>Ø 8,4</p> <p>Ø 2,2</p> <p>G 1/4</p>	<p>VH007</p>  <p>G 1/4</p> <p>Ø 11,6 min.</p> <p>118°</p> <p>1.6</p> <p>3 max.</p> <p>Ø 7 max.</p>

See Page 273

Ordering Code		
<div data-bbox="87 1220 922 1276"> <div>C</div><div>V</div><div>D</div><div>0</div> </div> <div data-bbox="87 1276 300 1384"> <p>Valve Basic Code</p> </div> <div data-bbox="199 1422 513 1568"> <p><u>Cavity</u></p> <p>G14 = GAS G1/4</p> <p>UNF or Metric cavities are available upon request</p> </div>	<div data-bbox="359 1220 534 1276"> <div>G</div><div>1</div><div>4</div> </div> <div data-bbox="582 1220 699 1276"> <div>0</div><div>N</div> </div> <div data-bbox="746 1220 922 1276"> <div>0</div><div>0</div><div>0</div> </div> <div data-bbox="917 1339 1268 1384"> <p>000 = standard configuration</p> </div> <div data-bbox="858 1422 1519 1456"> <p><u>Bias Spring</u> N = standard (cracking pressure <0.5 bar)</p> </div>	
Bias Spring Options		Options
<p>Customized bias springs can be offered upon request.</p>		 <p>Installation Tool: IK.001</p>

Specifications may change without notice.